

**DESPICE
PART LIST**

TXT PRO

125

200

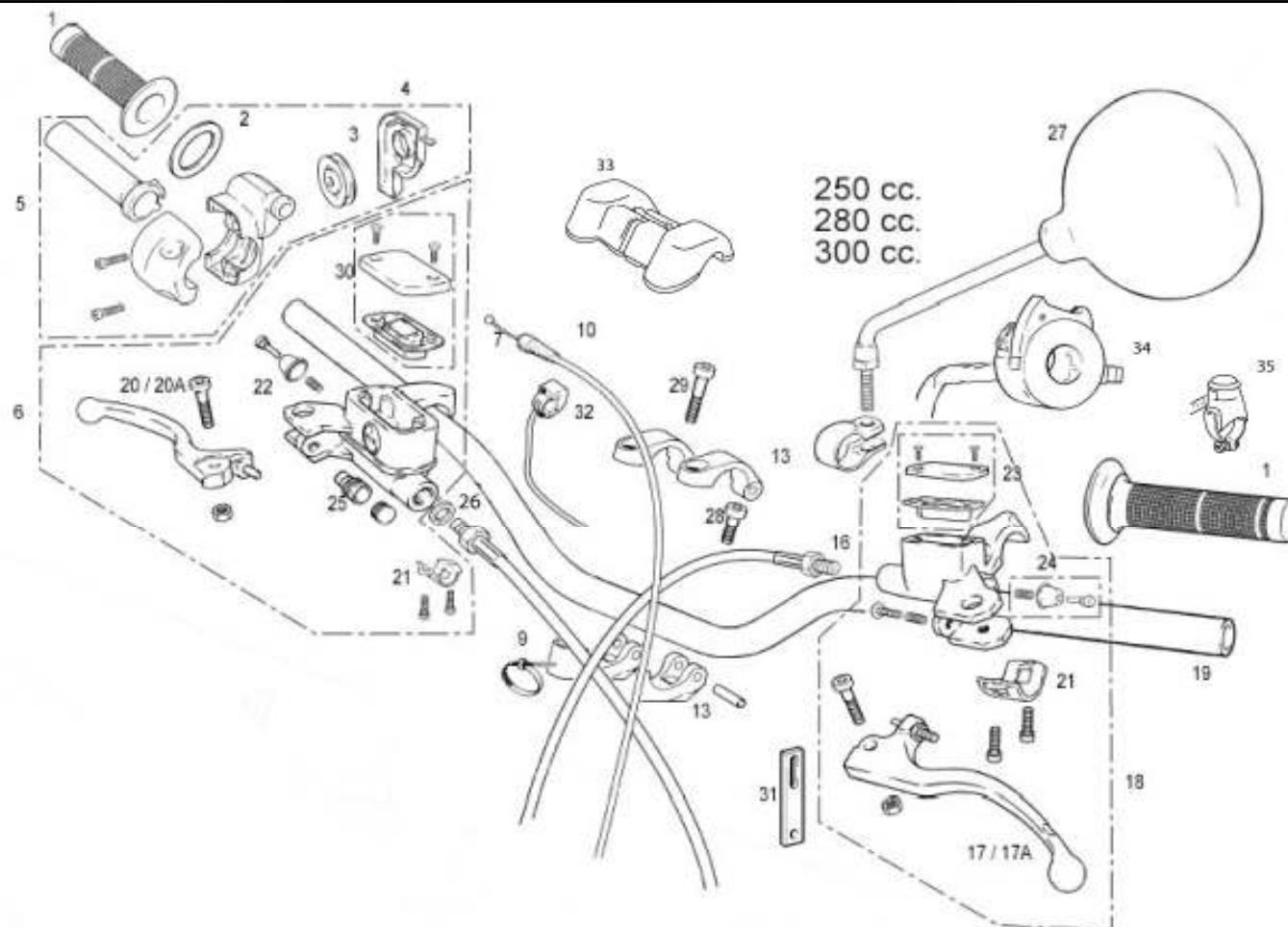
250

280

300

20008

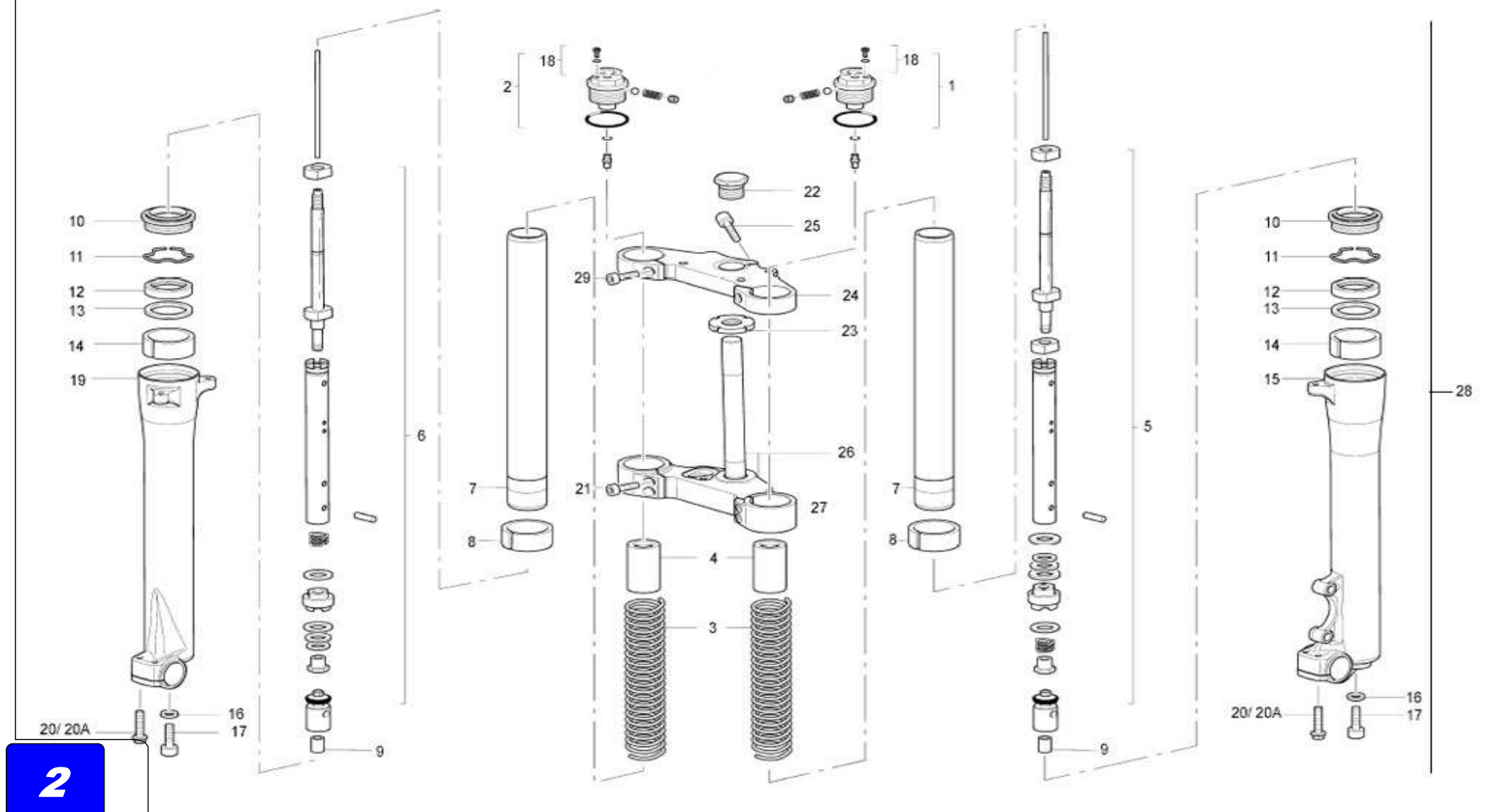
PARAGRAPH



Nº	DESCRIPCION / DESCRIPTION	USA	125 RACING	125/200	250/280/300	Cant.
1	JUEGO EMPUÑADURAS TRIAL / HANDLEBAR GRIP (PAIR)	BT280536002	BT280536002	-	BT280536002	1
2	ARANDELA MANDO GAS / TWIST GRIP WASHER	BT27922078	BT27922078	-	BT27922078	1
3	RODILLO MANDO GAS / TWIST GRIP ROLLER	E119000	E119000	-	E119000	1
4	TAPA MANDO GAS / TWIST GRIP COVER	E140000	E140000	-	E140000	1
5	PUÑO MANDO GAS / CPT. TWIST GRIP	E100001	E100001	-	E100001	1
6	BOMBA FRENO DELANTERO / FRONT BRAKE PUMP			-	BT280222008	1
7	CABLE DE GAS / THROTTLE CABLE	BT27924008	BT27924008	-	BT27924008	1
9	BRIDA UNEX 4.8X20 / UNEX 4.8X20 CLAMP	BE25634009	BE25634009	-	BE25634009	1
10	GUARDAPOLVO PUÑO GAS / THROTTLE CABLE DUST COVER			-	G600000	1
13	BRIDA MANILLAR / HANDLEBAR CLAMP			-	BT280414012C	1
16	LATIGUILLO EMBRAGUE TRIAL / CLUTCH TUBE	BT280522003	BT280522003	-	BT280522003	1
17	MANETA EMBRAGUE / CLUTCH LEVER			-	BT280222040	1
17A	MANETA EMBRAGUE RACING / CLUTCH LEVER R			-	BT280222040R	1
18	BOMBA EMBRAGUE ACEITE / CLUTCH PUMP			-	BT280422009	1
19	MANILLAR / HANDLEBAR ASSY.	BT280724001	BT280324001RA	BT280324001RA	BT280724001	1
20	MANETA FRENO AJP 93 PLATA / BRAKE LEVER TRIAL			-	R390002PL	1
20A	MANETA FRENO TRIAL / BRAKE LEVER			-	BT27922045	1
21	SOPORTE BOMBA EMBRAGUE / CLUTCH PUMP SUPPORT			-	BE250022211	2
22	KIT BOMBA FRENO / BRAKE PUMP SET			-	BT27722208	1
23	KIT TAPA BOMBA / COVER PUMP SET			-	BT280422210	1
24	KIT BOMBA EMBRAGUE / CLUTCH PUMP SET			-	BT280422209	1
25	CASQUILLO PULSADOR FRENO DELANTERO / PUSH BUTTON BUSHING			-	BT27922079	1
26	ARANDELA COBRE 10X14X1 / 10X14X1 WASHER			-	BT280422007	1
27	ESPEJO RETROVISOR / REAR VIEW MIRROR		L300760	-	L300760	2
28	TORNILLO UFK 8X20 / 8X20 UFK SCREW	T0318020	T0318020	-	T0318020	2
29	TORNILLO UFK 8X50 / 8X50 UFK SCREW	T0318050	T0318050	-	T0318050	2
30	TAPA BOMBA FRENO / KIT COVER PUMP			-	BT27722210	1
31	GOMA SUJECIÓN CABLEADOS / WIRE SUBJET RUBBER	BFS450320067	BFS450320067	-	BFS450320067	1
32	INTERRUPTOR CDI / CDI SWITCH	BT280634007	BT280634007	-	BT280634007	1
33	PROTECTOR MANILLAR TRIAL / TRIAL HANDLEBAR PROTECTOR	BT251002808	BT251002808	BT251002808	BT251002808	1
34	CONMUTADOR LUZ / LIGHT SWITCH	ET602002808	BE25734001	BE25734001	BE25734001	1
35	PULSADOR PARO TRIAL PRO RACING 08 / TRIAL PRO RACING 08 STOP SWITCH	ET603502808				1

GAS GAS

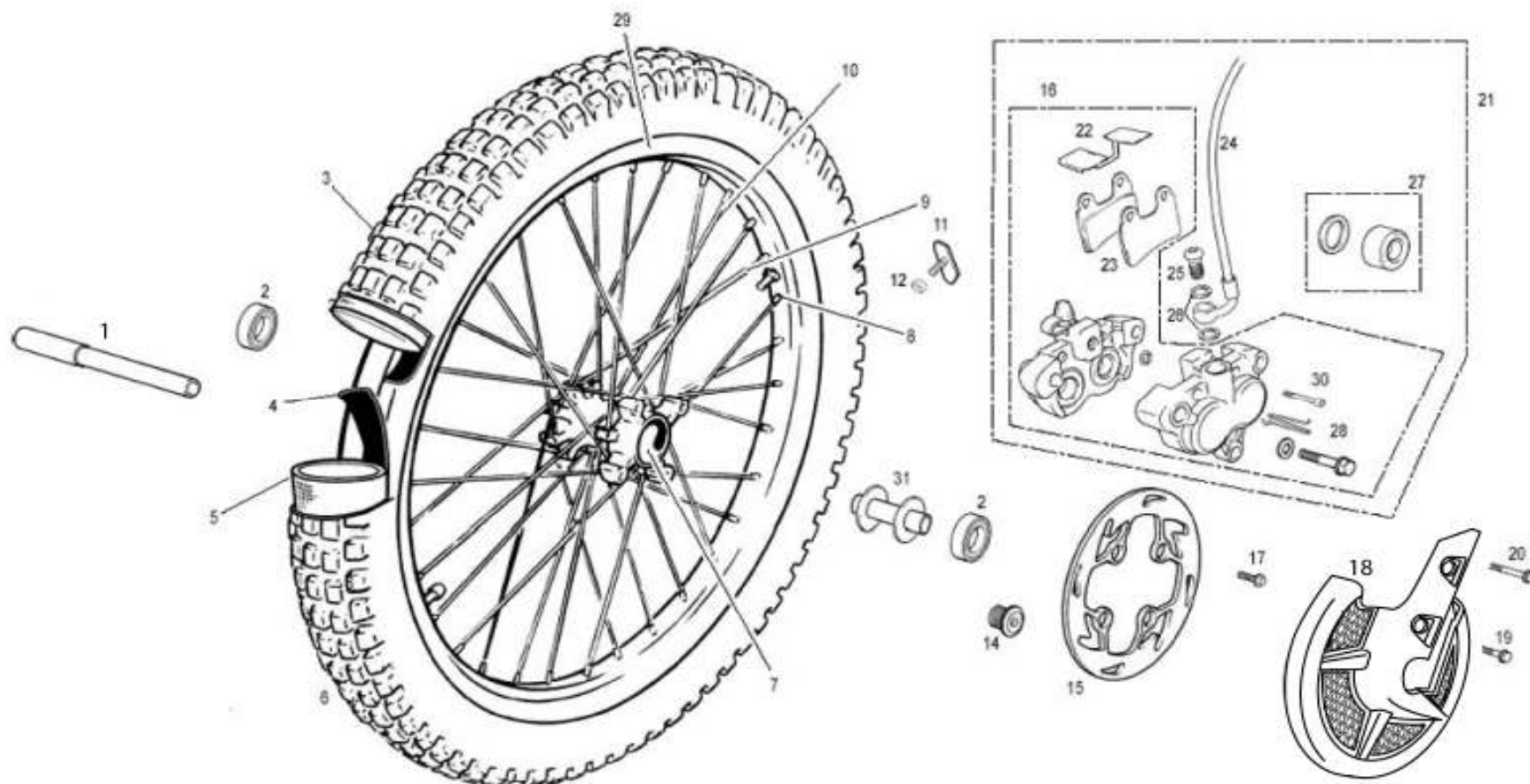
Chasis 1



Nº	DESCRIPCION / DESCRIPTION	USA	125 RACING	125/200	250/280/300	Cant.
1	CTO. TAPÓN REGULACIÓN COMPRESIÓN / ADJUSTING COMPRESSION CAP			BT280314105	BT280414105	1
2	CTO. TAPÓN REGULACIÓN EXTENSIÓN / ADJUSTING RETURN CAP			BT280314106	BT280414106	1
3	MUELLE SUSPENSIÓN / FRONT FORK SPRING			BT280314108	BT280414108	2
4	TOPE PRECARGA AMORTIGUADOR / PRE-LOAD WASHER			BT280314148	BT280414148	2
5	REGULADOR HIDRÁULICO COMPR. / ADJUSTER TOP COMPRESSION			BT280414114	BT280414114	1
6	REGULADOR HIDRÁULICO EXT. / ADJUSTER TOP RETURN			BT280414115	BT280414115	1
7	BARRA SUSPENSIÓN / FRONT FORK INNER TUBE			BT280314110	BT280514110	2
8	GLACIER SUSPENSIÓN / GLACIER BUSHING			ST950212	BT280414111	2
9	CENTRAJE TUBO HIDRÁULICO / SPACER BUSH			BT280314219	BT280414219	2
10	GUARDAPOLVO / DUST SEAL			BT280314131	BT280414131	2
11	SEEGER SUSPENSIÓN TRIAL / TRIAL FRONT FORK SEEGER			BT280114211	BT280414182	2
12	RETÉN / SEAL			ST950220	BT280414212	2
13	ARANDELA SUPERIOR TRIAL / TRIAL UPPER WASHER			BT280114213	BT280414133	2
14	GLACIER BOTELLA SUSPENSIÓN / TUBE GLACIER BUSH			ST950213	BT280414134	2
15	BOTELLA IZQUIERDA SUSPENSIÓN TRIAL / LEFT OUTER TUBE			BT280314143	BT280414019	1
16	ARANDELA GOMA INTERIOR / FRONT FORK WASHER SEAL			BT280414145	BT280414145	2
17	ALLEN / ALLEN SCREW			BT280414249	BT280414249	2
18	TORNILLO Y JUNTA TÓRICA / O'RING AND BOLT			BE25714103	BE2S714103	2
19	BOTELLA DERECHA SUSPENSIÓN TRIAL / RIGHT OUTER TUBE			BT280314142	BT280414009	1
20	ALLEN ESPECIAL 6X25 UFK / SPECIAL ALLEN 6X25			T0316025	-	4
20A	TORNILLO ESPECIAL 6X15 / SPECIAL ALLEN 6X15			-	T0206025	4
21	ALLEN BRIDA INFERIOR / SPECIAL ALLEN			T0308030	T0306025	4
22	TAPÓN PLATINA SUPERIOR / TOP STEERING AXLE CAP			BT280210030	BT280410030	1
23	TUERCA DIRECCIÓN / NUT UNDER TOP CLAMP			BT280210029	BT280410029	1
24	PLATINA SUPERIOR / CLAMP TRIPLE TOP (YOKE)			ST950300	BT280414001	1
25	ULS 6X10 TOPE FRENO PRO. FIL. / SCREW BOLT ULS 6X10			T0506010	-	1
26	EJE DIRECCIÓN / STEERING AXLE			BT280214003	-	1
27	PLATINA INFERIOR / LOWER TRIPLE CLAMP (YOKE)			BT280214002	BT280414002	1
28	SUSPENSIÓN TRIAL / TRIAL SUSPENSION SET	BT20000MZ2808	BT20000MZ2808	BT20000MZ1208	BT20000MZ2808	1
29	ALLEN BRIDA SUPERIOR / SPECIAL ALLEN			T0308030	T0306020	2

GAS GAS

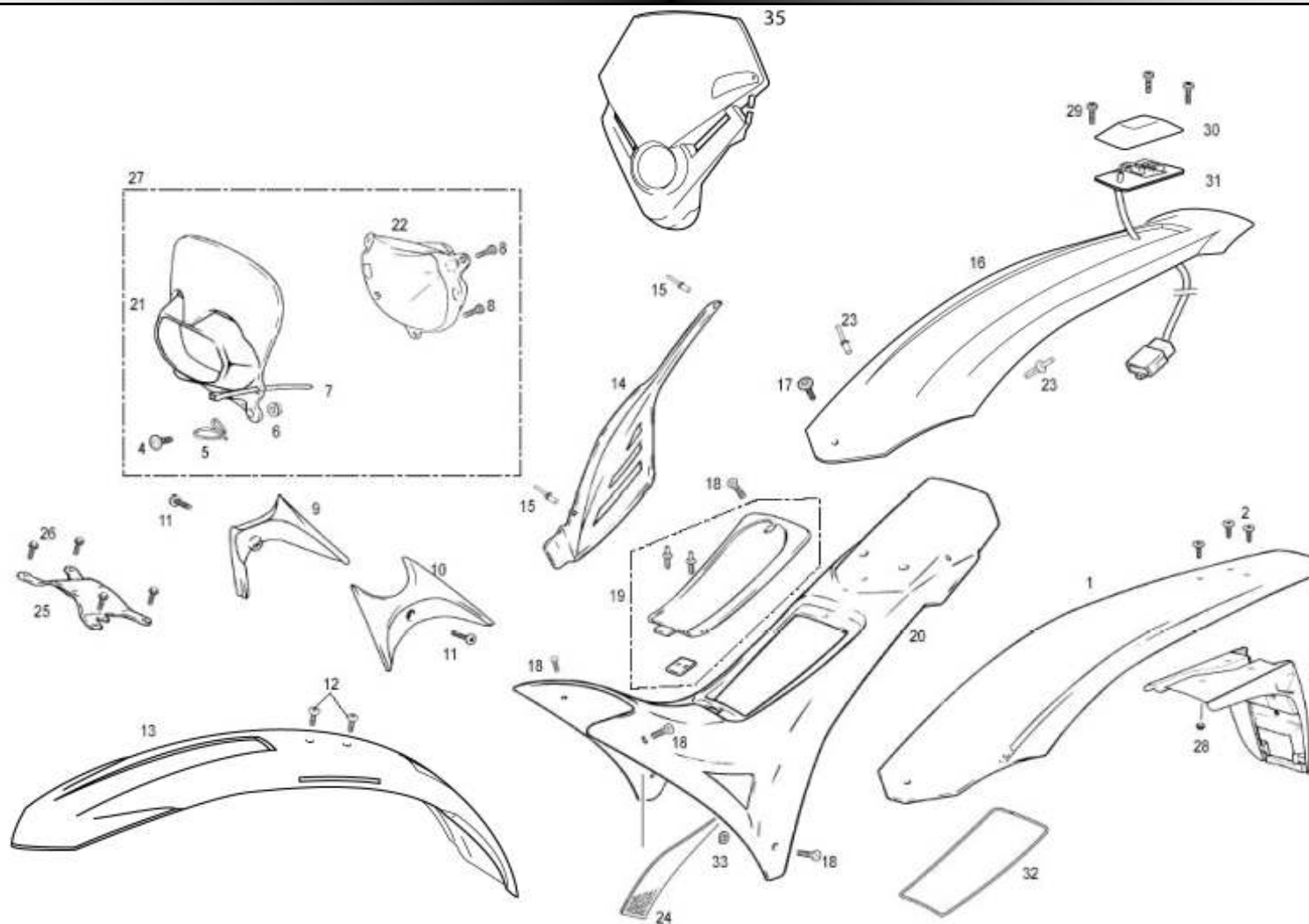
Chasis 2



Nº	DESCRIPCION / DESCRIPTION	USA	125 RACING	TXT PRO 2007	250 / 280 AZ	Cant.
1	EJE RUEDA DELANTERA TRIAL PRO 2004 / FRONT WHEEL AXLE	BT280418017	BT280418017	BT280418017	-	1
2	COJINETE / BEARING			ME120136055	-	2
3	CUBIERTA DELANTERA 2.75X21 / FRONT TYRE			N140000	-	1
4	GOMA PROTECTOR R14025 2.75X21 REF. 554350 / FRONT FLAP TYRE			N100000	-	1
5	CÁMARA DELANTERA 2.75X21 REF. 450905 / FRONT TUBE			N120000	-	1
6	RUEDA DELANTERA TRIAL PRO / PRO FRONT WHEEL	BT280718000	BT280718000	BT280718000	-	1
7	CUBO RUEDA DELANTERA TRIAL / FRONT HUB WHEEL	BT280418007	BT280418007	BT280418007	-	1
8	TUERCA RADIOS 3MM. RUEDA DELANTERA DIA. 6.5 / SPOKE NUT			BT27718001	-	32
9	RADIO 3X257 RUEDA DELANTERA TRIAL / FRONT WHEEL SPOKE			BRT500118008	-	16
10	RADIO 3X254 RUEDA DELANTERA TRIAL / FRONT WHEEL SPOKE			BRT500118009	-	16
11	AGARRE CUBIERTA / TYRE CLAMP			BE25618027	-	1
12	TUERCA CON ARANDELA ESTRIADA M8 ZINCADA / NUT WITH WASHER			BE25818060	-	1
14	TORNILLO EJE RUEDA DEL. TRIAL PRO 2004 / FRONT WHEEL AXLE SCREW	BT280418026	BT280418026	BT280418026	-	1
15	DISCO FRENO DELANTERO / FRONT BRAKE DISK			BT280322011	-	1
16	PINZA FRENO DELANTERO / FRONT BRAKE PADS			BT280222000	-	1
17	HEXAGONAL M8 CON ARANDELA / M8 HEXAGONAL SCREW WITH WASHER			T0206020	-	4
18	PROTECTOR DISCO FRENO / FRONT BRAKE DISK PROTECTOR	BT941002808	BT941002808	BT941002808	BT94100AZ2808	1
19	TORNILLO PINZA FRENO DELANTERA INFERIOR 8X1.25X36.5 / SCREW			BT280022071	-	1
20	TORNILLO PINZA FRENO DELANTERA SUPERIOR 8X1.25X62.5 / SCREW			BT280022070	-	1
21	CTO. FRENO DELANTERO TRIAL / FRONT BRAKE SET	BT60000CT2808	BT280422108	BT280422108	BT280422108	1
22	PLANCHA PROTECCIÓN PASTILLAS FRENO / BRAKE PAD PROTECTOR			BT280222213	-	1
23	PASTILLA FRENO DELANTERA 229.99102 / FRONT BRAKE PAD			BT280222065	-	2
24	LATIGUILLO FRENO DELANTERO 2000 / FRONT BRAKE TUBE			BT280222002	-	1
25	TORNILLO LATERAL BOMBA FRENO TRAS. / HOSE SCREW			BT27722212	-	1
25A	RÁCORD ALUMINIO TI M10 100 / ALUMINIUM HOSE SCREW			BT280522212	-	1
26	ARANDELA PLANA COBRE 10.25X14X1.4 / 10.25X14X1.4 WASHER			BT27922072	-	2
27	KIT REPARACION PINZA FRENO DEL. / FRONT BLAKE CALIPER SET			BT280222201	-	1
28	CHAVETA SUJECCIÓN PASTILLA FRENO / FRONT BRAKE PAD KEY			R250000	-	1
29	LLANTA DELANTERA / FRONT WHEEL RIM			BRT500118006	-	1
30	TORNILLO SUJECCION PASTILLAS / BRAKE PADS SCREW			BT280222006	-	1
31	CASQUILLO INTERIOR BUJE / BUSHING			BT280418051	-	1

GAS GAS

Chasis 3



Nº	DESCRIPCION / DESCRIPTION	USA	125 RACING	ROJO / RED	AZUL / BLUE	Cant.
1	GUARDABARROS TRAS. TRIAL HOMOLOGADO / TRIAL REAR FENDER	BT93500H2808	BT93500H2808	BT93500H2808	BT93500HAZ2808	1
2	TORNILLO NEGRO ULS 6X16 / 6X16 ULS SCREW			T0506016N	-	3
3	PORTAMATRICULAS TRIAL HOMOLOGADO / TRIAL PLATE SUPPORT			BT280520003	-	1
4	TORNILLO ULS 6X14 CON ARANDELA PLATA / ULS SCREW 6X14			T0556014	-	1
5	GANCHO INOXIDABLE / RUSTLESS HOOK			M130000	-	1
6	TUERCA CON ARANDELA M6 / M6 NUT WITH WASHER			T2206000	-	2
7	BRIDA UNEX / UNEX CLAMP			BE25634007	-	2
8	TORNILLO ROSCA-CHAPA 3X9 / 3X9 SCREW			T1003009	-	4
9	PROTECTOR RADIADOR DERECHO / RIGHT RADIATOR COVER	BT915002808	BT915002808	BT915002808	BT91500AZ2808	1
10	PROTECTOR RADIADOR IZQUIERDO / LEFT RADIATOR COVER	BT920002808	BT920002808	BT920002808	BT92000AZ2808	1
11	TORNILLO CHAPA 4.2X13 / SCREW 4.2X13			T259349	-	2
12	ULS 5X8 / 5X8 ULS SCREW			T0505008	-	2
13	GUARDABARROS DELANTERO 2005 / TRIAL 2005 FRONT FENDER	BT910002808	BT910002808	BT910002808	BT91000AZ2808	1
14	PROTECTOR ESCAPE TRIAL 2002 / EXHAUST PROTECTOR			BT280226021	-	1
15	REMACHE ALUMINIO 4X12 CABOTA NEGRA / ALUMINIUM RIVET			T4504012N	-	2
16	GUARDABARROS TRAS. TRIAL 2005 / TRIAL 2005 REAR FENDER	BT9350002808	BT9350002808	BT9350002808	BT935000AZ2808	1
17	ULS 6X16 CON ARANDELA NEGRO / 6X16 BLACK ULS WITH WASHER			T0556016N	-	1
18	TORNILLO CONICO 6X16 NEGRO / BLACK 6X16 CONIC SCREW			T0406016N	-	5
19	TAPA CAJA FILTRO TRIAL 2005 / TRIAL PRO 2005 FILTER BOX COVER	BT945012808	BT945012808	BT945012808	BT945012AZ2808	1
20	BASE ASIENTO TRIAL 2005 / TRIAL 2005 SEAT STRUCTURE	BT945002808	BT945002808	BT945002808	BT94500AZ2808	1
21	FARO DELANTERO TRIAL 2005 / TRIAL 2005 FRONT HEADLIGHT					
22	ÓPTICA HOMOLOGADA / APPROVED HEADLIGHT			BT280170022	-	1
23	REMACHE PLASTICO NEGRO GUARDAB. TRAS. / PLASTIC RIVET			T4503270	-	2
24	ADH. PROTECTOR ESCAPE AMIANTO / EXHAUST PROTECTOR STICKER			BT280238059	-	1
25	PUENTE HORQUILLA DELANTERA / FRONT SUSPENSION UNION			BT280110055	-	1
26	TORNILLO ESPECIAL 6X14 / 6X14 SPECIAL SCREW			T0206014	-	4
27	CTO. FARO HOMOLOGADO / APPROVED HEADLIGHT SET		BT90500HCT2808	BT90500HCT2808	BT90500HAZCT2808	1
28	TUERCA AUTOBLOCANTE M6 C/ARAND / SELF-LOCKING NUT M6			T2206002	-	3
29	TORNILLO ROSCA-CHAPA 3.5X13 / SCREW 3.5X13			T0603513	-	3
30	FARO PILOTO TRASERO TRIAL / REAR LIGHT	EE300002808	EE300002808	EE300002808	EE300002808	1
31	LÁMPARA LEDS / ELECTRONIC LED LAMP			L300119	-	1
32	TUBO FLEXIBLE SILICONA BASE ASIENTO / SEAT BASE SILICON HOSE			BT280236042	-	1
33	ARANDELA 5X12X1'5 / WASHER 5X12X1'5			T4005012	-	1
34	ALARGO INSTALACIÓN PILOTO TRASERO / EXTEND INSTALLATION REAR LIGHT	ET300102808				1
35	FARO TRIAL RACING / RACING FRONT HEADLAMP TRIAL	BT90500RC2808	BT90500RC2808			1

GAS GAS

Chasis 4



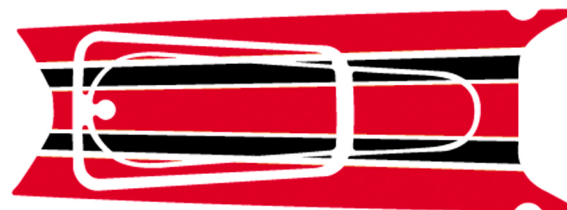
2 / 2A / 2B / 2C / 2D



6



11 / 11A / 11B / 11C / 11D



3



1 / 1A / 1B / 1C / 1D



7



4



5



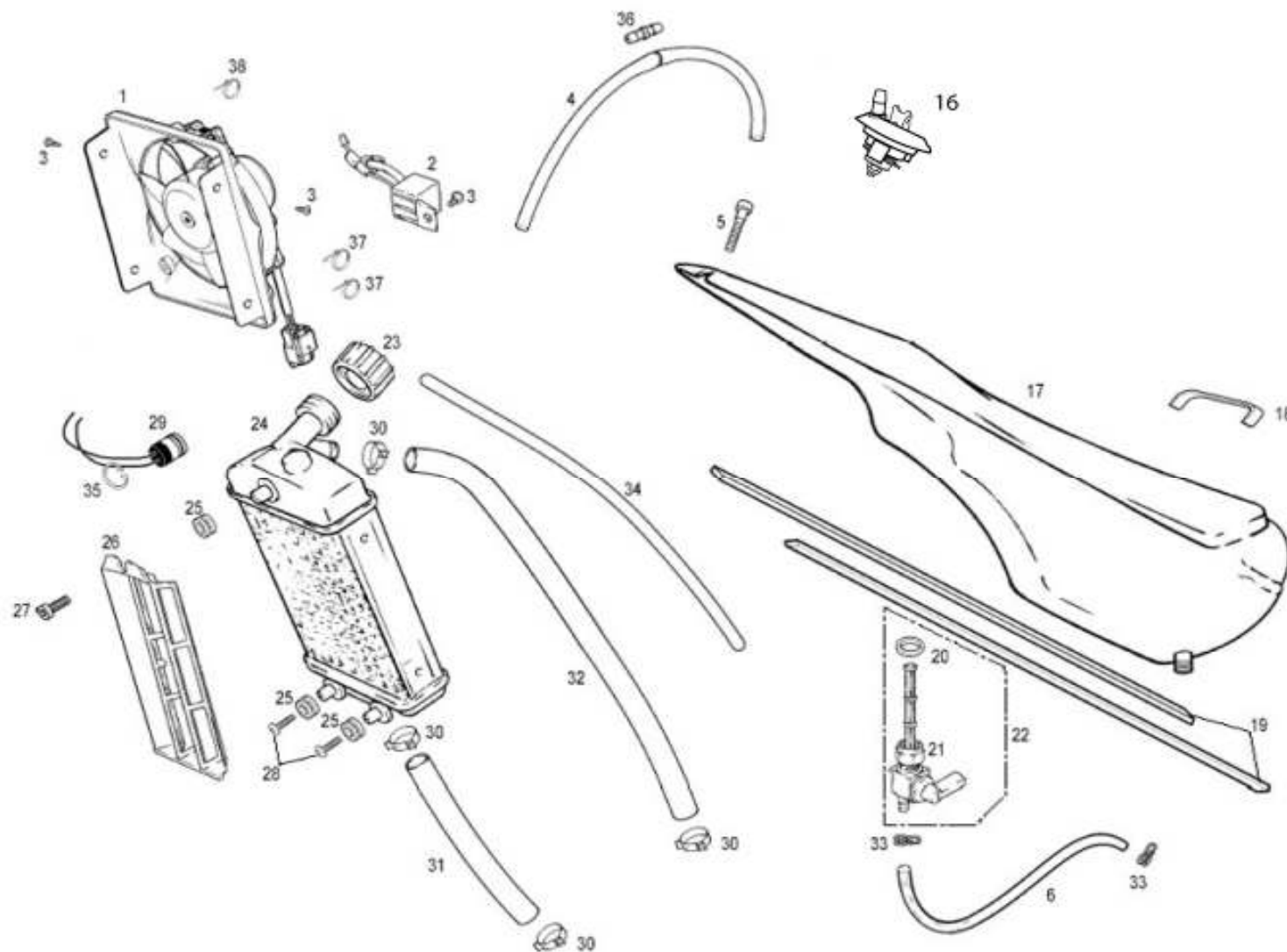
8 GAS GAS



9

10

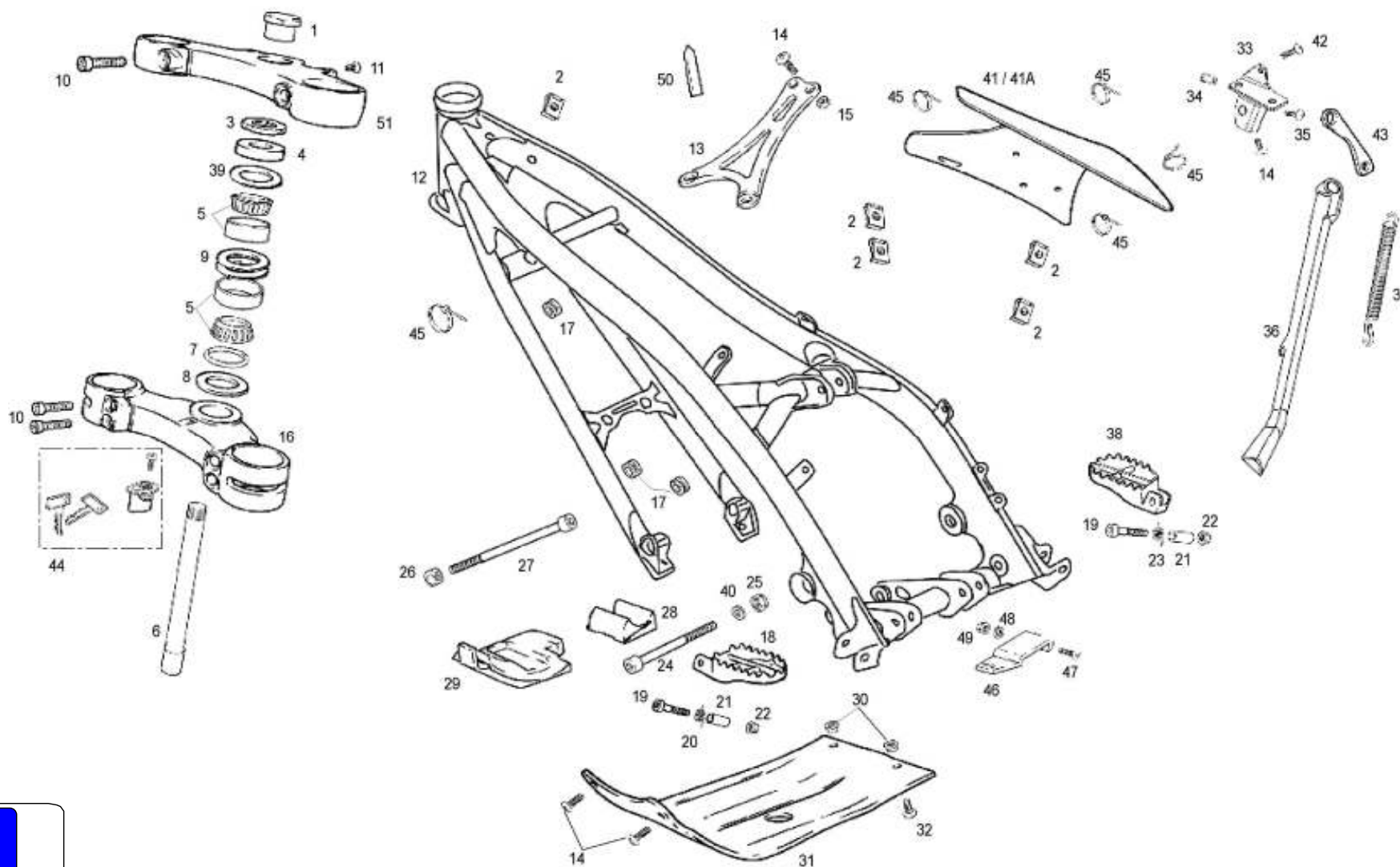
[illegible]



Nº	DESCRIPCION / DESCRIPTION	125 / 200 / 250 / 280	300	Cant.
1	VENTILADOR F-14 / FUN F-14	BFS450332340		1
2	MODULO VENTILADOR / FUN MODULE	BT120532342	BT280532342	1
3	TORNILLO ROSCA CHAPA CON ARANDELA / SCREW THREAD WITH WASHER	-	T0604210	3
4	TUBO DESVAPORIZADOR DEPÓSITO 41cm. / TANK TUBE 41CM. LONG	-	BT280310018	1
5	TORNILLO M6X30 / SCREW M6X30	-	T0206030	1
6	TUBO GASOLINA TRIAL / FUEL HOSE	-	BT280236004	1
16	CTO. TAPÓN GASOLINA / CPT. PLUG FUEL-PETROL	-	BT280420010	1
17	DEPÓSITO TRIAL PINTADO 2004 / PAINTED TRIAL 2004 TANK	-	BT280710024	1
18	JUNTA ADHESIVA DEPÓSITO 125x10 / STICKER TANK GASKET	-	BT280038018	1
19	JUNTA ADHESIVA DEPÓSITO CHASIS 38 X 1 / STICKER TANK GASKET,FRAME	-	BT27838018	2
20	ARANDELA GRIFO DEPÓSITO / WASHER TANK TAP	-	BT27910131	1
21	TUERCA GRIFO DEPÓSITO / NUT TANK TAP	-	BT27910132	1
22	GRIFO GASOLINA C/90 / FUEL VALVE	-	BT27810031	1
23	TAPÓN RADIADOR TP50806 TRIAL 2002 / RADIATOR CAP	-	BT280232032	1
24	CTO. RADIADOR CON VENTILADOR TRIAL PRO / TRIAL PRO RADIATOR	BT70000CT2808	BT70000CT2808	1
25	GOMAS RADIADOR A CHASIS / RADIATOR TUBE TO FRAME	-	G220000	3
26	REJILLA RADIADOR TRIAL 2002 / RADIATOR GRILL	-	BT280220001	1
27	ALLEN 6X14 / 6X14 ALLEN BOLT	-	T0306014	1
28	ULS 6x10 CON ARANDELA / 6X10 ULS BOLT WITH WASHER	-	T0556010	2
29	TERMO CONTACTO / TERMO-CONTACT	-	BT280432065	1
30	ABRAZADERA COBRA DE 21 / COBRA CLAMP 21	-	L200046	4
31	TUBO INFERIOR RADIADOR-BOMBA AGUA / RADIATOR-WATER PUMP LOWER TUBE	-	BT280232003	1
32	TUBO SUPERIOR RADIADOR-CULATA / RADIATOR-CYL. HEAD UPPER TUBE	-	BT280432002	1
33	ABRAZADERA ELÁSTICA NEGRA ALAMBRE 9.3X9.9 2016055 / SPRING CLAMP	-	L200036	2
34	TUBO DESVAPORIZADOR TAPÓN GAS (26cm) / RADIATOR EXCESS TUBE HOSE	-	BE25620011	1
35	CLIP TERMOSTATO PRO 2005 / SEEGER	-	BT280432066	1
36	VÁLVULA DESVAP. DEPÓSITO / UNSTEAMER VALVE	-	BT27836025	1
37	BRIDA UNEX CORTA 2.5X98 / UNEX CALMP	-	BE25634010	2
38	BRIDA UNEX 2244 4.8X20 / UNEX CLAMP	-	BE25634009	1

GAS GAS

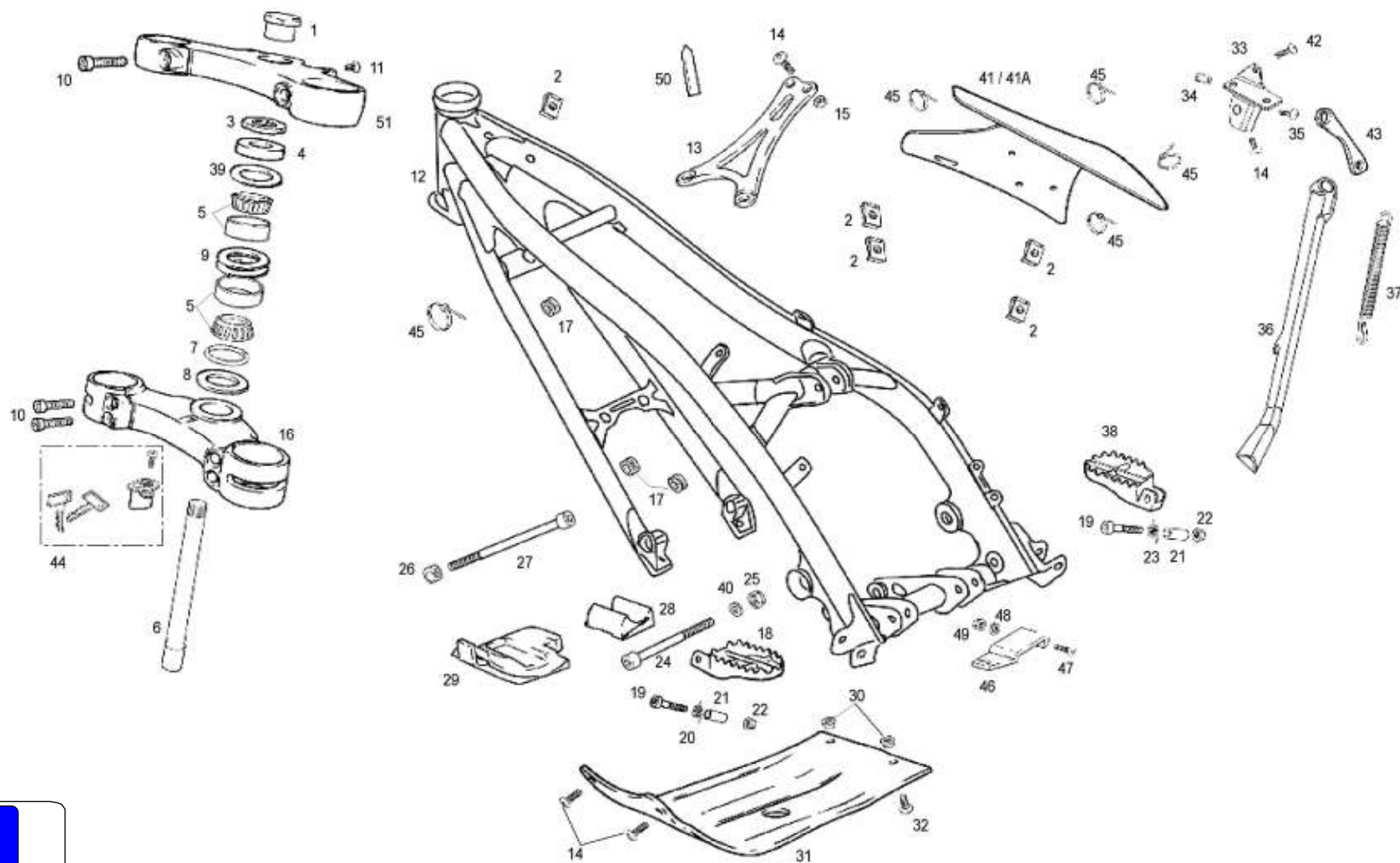
Chasis 6



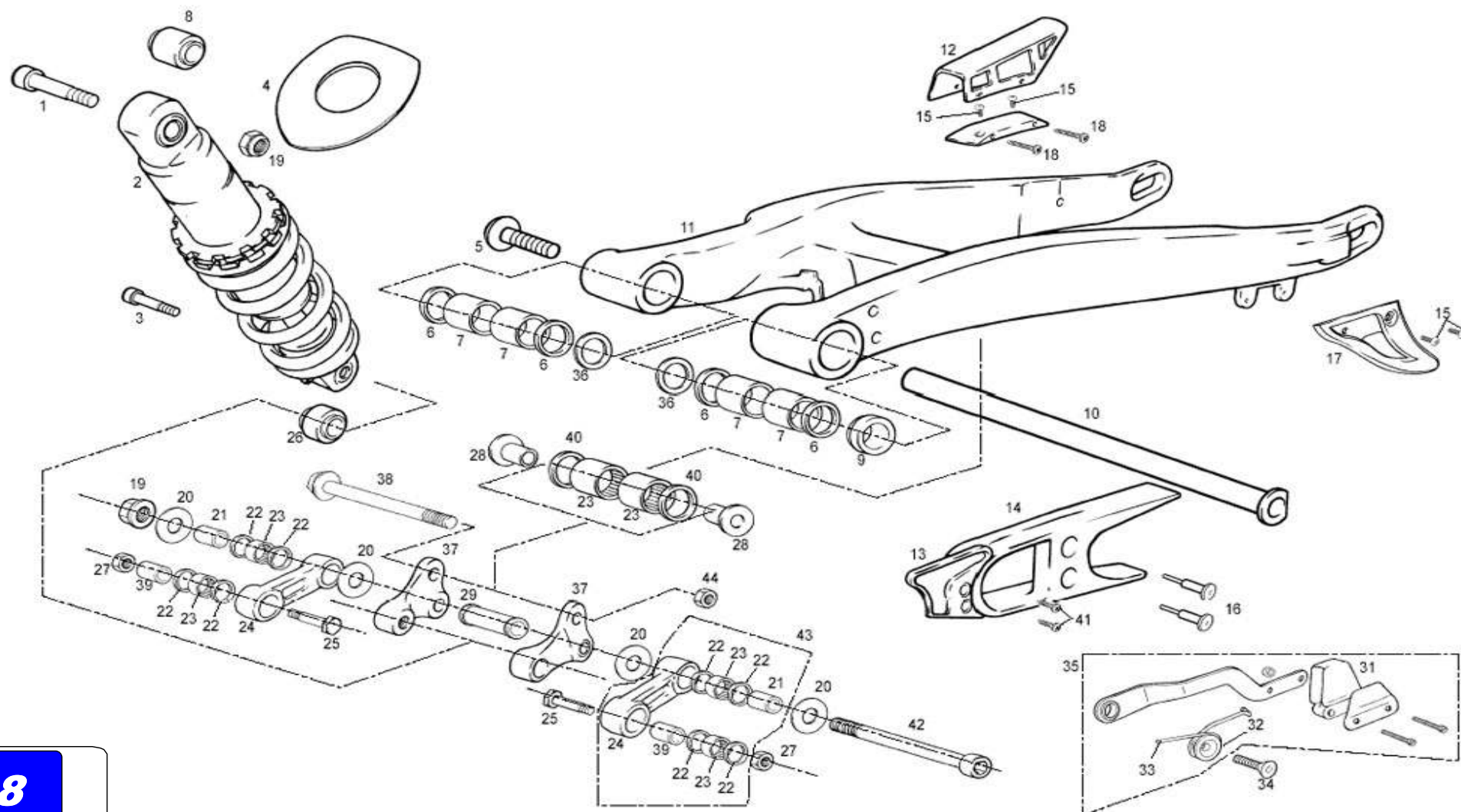
Nº	DESCRIPCION / DESCRIPTION	USA	125 RACING	125 / 200	250 / 280 / 300	Cant.
1	TUERCA SUPERIOR DIRECCIÓN TRIAL / NUT TOP STEERING AXLE	BT280410030	BT280410030	BT280210030	BT280410030	1
2	TUERCA NUT 956 RAPIDA M6 / M6 FAST NUT	T2606000	T2606000	-	T2606000	5
3	TUERCA INFERIOR DIRECCIÓN TRIAL / NUT UNDER TOP CLAMP	BT280410029	BT280410029	BT280210029	BT280410029	1
4	GUARDAPOLVO COJINETES DIRECCIÓN / BEARING STEERING, DUST COVER	BEP250210026	BEP250210026	-	BEP250210026	1
5	COJINETE DIRECCIÓN URBXA 32004 / BEARING STEERING	BT280210008	BT280210008	-	BT280210008	2
6	EJE DIRECCIÓN TRIAL 2002 / AXLE STEERING			BT280214003	-	1
7	TÓRICA DIRECCIÓN 37X2,5 ENDUPAMP 250 / O'RING STEERING	BEP250210012	BEP250210012	-	BEP250210012	1
8	ARANDELA REGLAJE BLANCA / WHITE WASHER	BT280210026	BT280210026	-	BT280210026	1
9	ARANDELA 36X42X0.5 / 36X42X0.5 WASHER	T4003642	T4003642	-	T4003642	2
10	ALLEN BRIDA INFERIOR / ALLEN SCREW			T0308030	T0306025	6
11	ULS 6X10 DIRECCIÓN / STEERING ULS			T0506010	-	1
12	CHASIS TRIAL 2008 PINTADO / PAINTED 2008 TRIAL FRAME	BT100002808	BT10000RC2808	BT100002808	BT100002808	1
13	TIRANTE CILINDRO / BRACE CYLINDER	BT280110050	BT280110050	-	BT280110050	1
14	ULS 8X20 / 8X20 ULS	T0508020	T0508020	-	T0508020	7
15	TUERCA AUTOBLOCANTE M-8 ALTA / SELF-LOCKING NUT M8 HIGH	T2108002	T2108002	-	T2108002	4
16	PLATINA INFERIOR TRIAL / FORK CLAMP (LOWER)			BT280214002	BT280414002	1
17	GOMAS RADIADOR A CHASIS / RADIATOR PROTECTOR RUBBER	G220000	G220000	-	G220000	3
18	ESTRIBO IZQUIERDO 99 / FOOTSTEP (LEFT)	BT27910003	BT27910003	-	BT27910003	1
19	PASADOR ESTRIBERA / SCREW	T0508045	T0508045	-	T0508045	2
20	MUELLE ESTRIBO IZQUIERDO / SPRING FOOTSTEP (LEFT)	M100004	M100004	-	M100004	1
21	CASQUILLO ESTRIBO TRIAL-99 / BUSH FOOTSTEP	BT27910006	BT27910006	-	BT27910006	2
22	TUERCA AUTOBLOCANTE M-8 BAJA (DIN 982) / NUT NYLOCK LOW	T2108001	T2108001	-	T2108001	2
23	MUELLE ESTRIBO DERECHO / SPRING FOOTSTEP, RIGHT	M100003	M100003	-	M100003	1
24	ALLEN 10x85 / 10X85 ALLEN BOLT	T0301085	T0301085	-	T0301085	1
25	TUERCA AUTOBLOCANTE M10 BAJA / SPECIAL M10 NUT	T2110001	T2110001	-	T2110001	1
26	TUERCA ESPECIAL M10 / SPECIAL M10 NUT	BT280210069	BT280210069	-	BT280210069	1
27	ALLEN M10X140 ZINCADO 12.9 / SCREW, BOLT ALLEN M10X140	T0310140	T0310140	-	T0310140	1
28	GOMA PROTECTOR TRASERO MOTOR / REAR ENGINE PROT. RUBBER	BT280336029	BT280336029	-	BT280336029	1
29	GOMA PROTECTOR DELANTERO MOTOR / FRONT ENGINE PROT. RUBBER	BT280236030	BT280236030	-	BT280236030	1
30	CASQUILLO PROTECTOR CÁRTER / CHASIS TRIAL / BUSHING	BT280310883	BT280310883	-	BT280310883	2
31	PLACA PROTECCIÓN MOTOR / TRIAL ENGINE PROTECTOR PLATE	BT280210005	BT280210005	-	BT280210005	1
32	ULS 8X16 / ULS 8X16	T0508016	T0508016	-	T0508016	2
33	SOPORTE CABALLETE TRIAL 2000 / SIDE STAND BRACKET SUPPORT	BT280712023	BT280712023	-	BT280712023	1

GAS GAS

Chasis 7



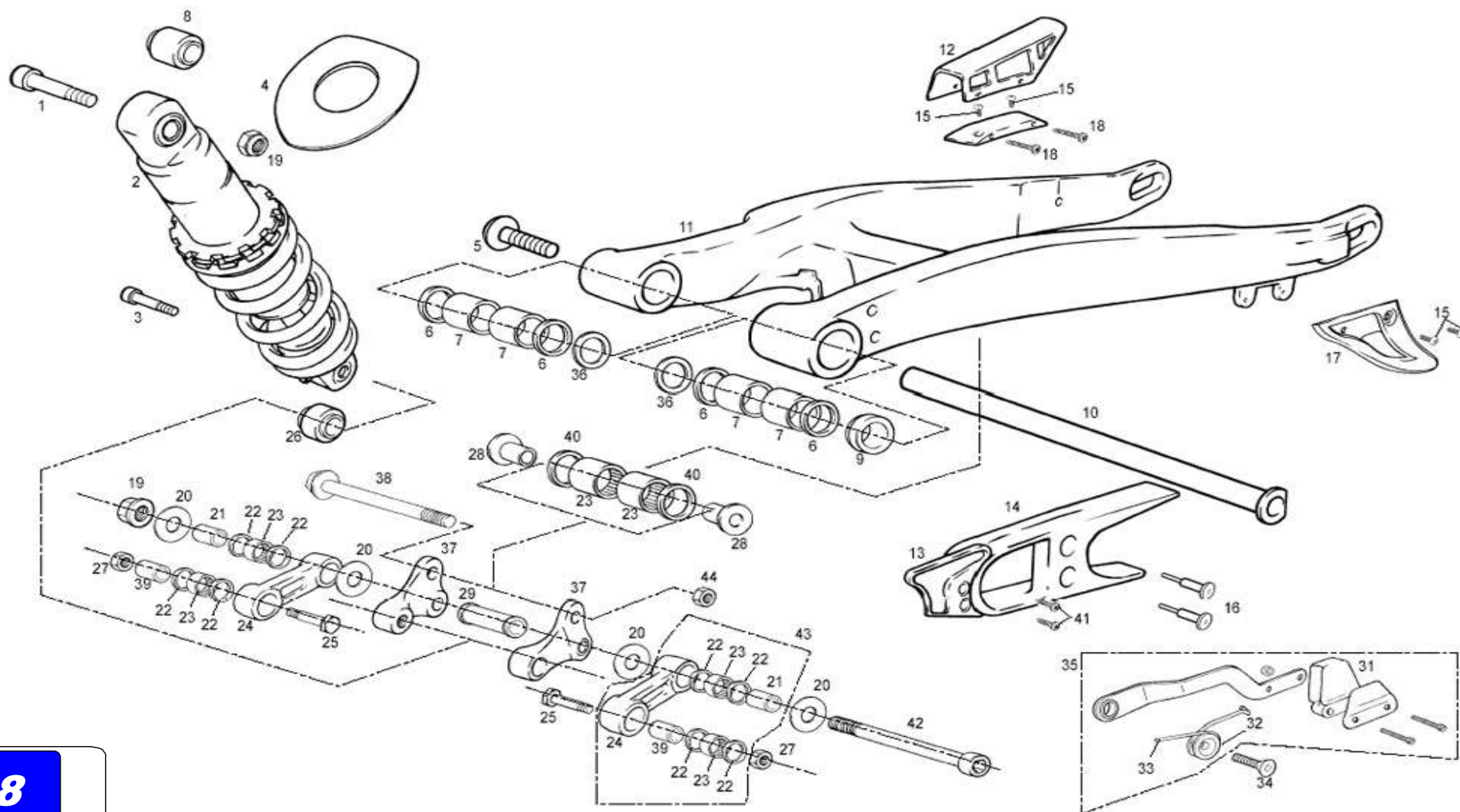
[illegible]



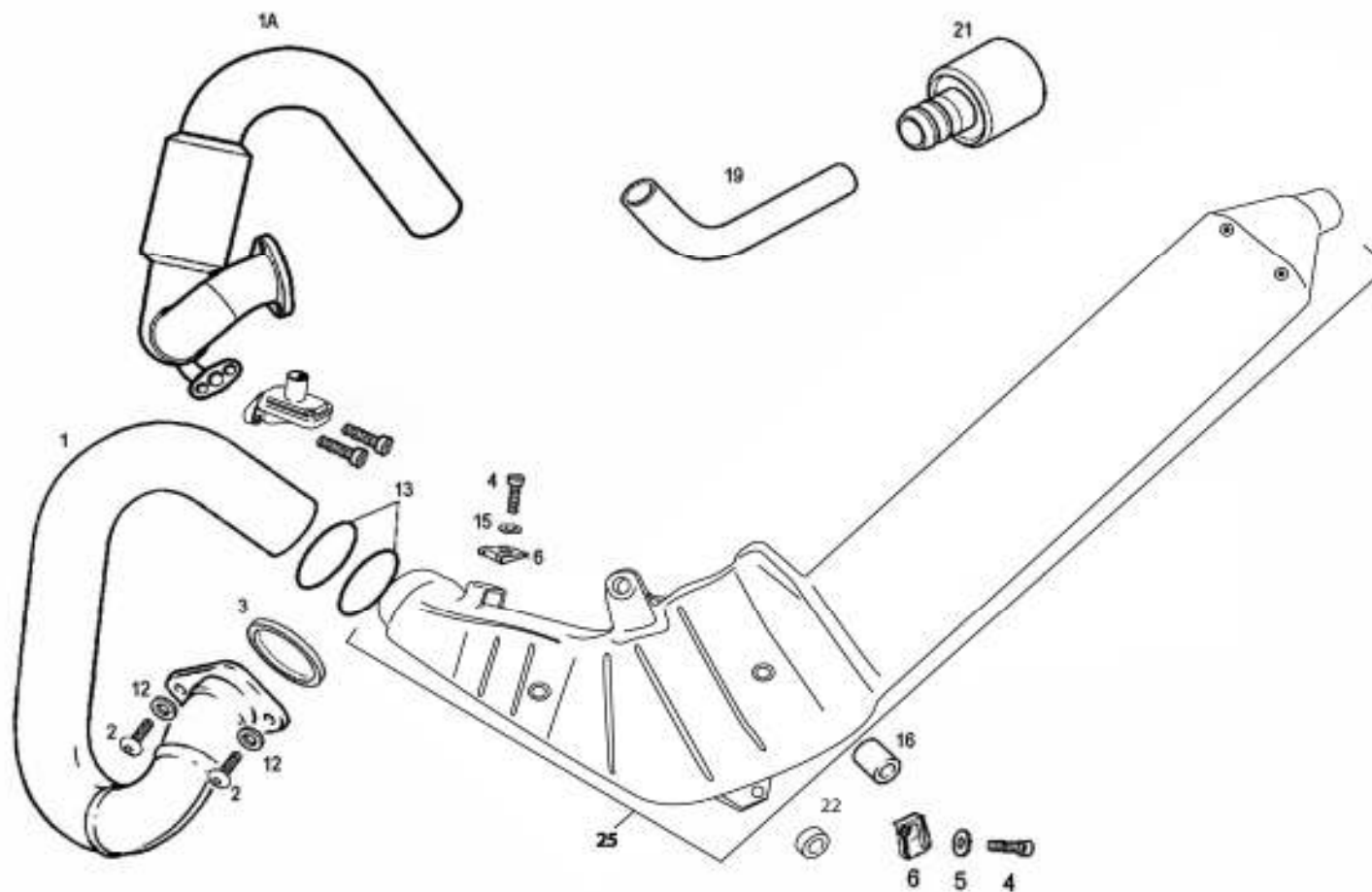
Nº	DESCRIPCION / DESCRIPTION	USA	125 RACING	125 / 200	250 / 280 / 300	Cant.
1	ALLEN 10X55 / 10X55 ALLEN SCREW	T0301055	T0301055	-	T0301055	1
2	AMORTIGUADOR TRIAL / SHOCK ABSORBER	BT280314004RA	BT280314004RA	BRT500114004	BT280314004RA	1
3	TORNILLO ESPECIAL / SPECIAL SCREW	T0310046	T0310046	-	T0310046	1
4	GOMA PROTECCIÓN AMORTIGUADOR TRASERO / REAR SHOCK PROTECTOR	BT280236041	BT280236041	-	BT280236041	1
5	TORNILLO EJE BASCULANTE TRIAL / SWING-ARM AXLE SCREW	BT280212009	BT280212009	-	BT280212009	1
6	RETÉN 20-26-4 870 N BASCULANTE / 20-26-4 OIL SEAL	C220001	C220001	-	C220001	4
7	COJINETE / BEARING	BT280212032	BT280212032	-	BT280212032	4
8	SILENTBLOCK AMORTIGUADOR / REAR SHOCK ABSORVER SILENTBLOCK	BT280414305	BT280414305	-	BT280414305	1
9	CASQUILLO GUÍA EJE BASCULANTE / SWING-ARM AXLE BUSHING	BT280212108	BT280212108	-	BT280212108	1
10	EJE BASCULANTE TRIAL / SWING-ARM AXLE	BT280412008	BT280412008	-	BT280412008	1
11	BASCULANTE TRIAL / TRIAL 2002 SWING-ARM	BT280712002	BT280312002RA	BT280712002	BT280712002	1
12	CUBRECADENAS / CHAIN COVER	BT280428011	BT280428011	-	BT280428011	1
13	PROTECTOR PIÑÓN TRIAL 2002 / PINION PROTECTOR	BT280236021	BT280236021	-	BT280236021	1
14	PATÍN CADENA / CHAIN GUIDE	BT280412015	BT280412015	-	BT280412015	1
15	ULS 5X12 / 5X12 ULS	T0505012	T0505012	-	T0505012	4
16	REMACHE CABOTA GRANDE 14X4 8X21 PATÍN / RIVET	T4505016	T4505016	-	T4505016	2
17	PROTECTOR CORONA TRIAL 2003 / SPROCKET PROTECTOR	BT280320029	BT280320029	-	BT280320029	1
18	TORNILLO ROSCA CHAPA PHILIPS 4X38 / 4X38 PHILIPS SCREW	T0614838	T0614838	-	T0614838	2
19	TUERCA AUTOBLOCANTE / SELF-LOCKING NUT	T2110001	T2110001	-	T2110001	2
20	ARANDELA REGLAJE 10.5X26X0.5 / 10.5X26X0.5 WASHER	T4001026	T4001026	-	T4001026	4
21	CASQUILLO SUSPENSIÓN DIAM. 10 / SUSPENSION BUSHING	BT27712005	BT27712005	-	BT27712005	2
22	RETÉN 15X21X2 / 15X21X2 OIL SEAL	C230001	C230001	-	C230001	8
23	COJINETE AGUJAS 15BM2116 / NEEDLE BEARING	BT27714009	BT27714009	-	BT27714009	6
24	BIELETA ALUMINIO TRIAL 2000 / ALUMINIUM ROD	BT280014008	BT280014008	-	BT280014008	2
25	TORNILLO ESPECIAL BIELETA 8X38 / 8X38 SPECIAL SCREW	T0118038	T0118038	-	T0118038	2
26	RÓTULA AMORTIGUADOR / BALL AND SOCKET JOIN	BT280214300	BT280214300	-	BT280214300	1
27	TUERCA AUTOBLOCANTE M8 ALTA / SELF-LOCKING NUT	T2108002	T2108002	-	T2108002	2
28	CASQUILLO BALANCÍN 99 / ARTICULATION BUSHING	BT27914014	BT27914014	-	BT27914014	2
29	CASQUILLO DISTANCIADOR BALANCÍN / ARTICULATION SPACER BUSHING	BT27914016	BT27914016	-	BT27914016	1
31	GOMA TENSOR CADENA / TENSIONER CHAIN RUBBER	G180010	G180010	-	G180010	1
32	CASQUILLO TENSOR CADENA / CHAIN TENSIONER BUSHING	B560000	B560000	-	B560000	1
33	MUELLE TENSOR CADENA / CHAIN TENSIONER SPRING	M122000	M122000	-	M122000	1
34	ALLEN CONICO 8X30 TENSOR CADENA / 8X30 CONIC ALLEN	T0408030	T0408030	-	T0408030	1

GAS GAS

Chasis 8



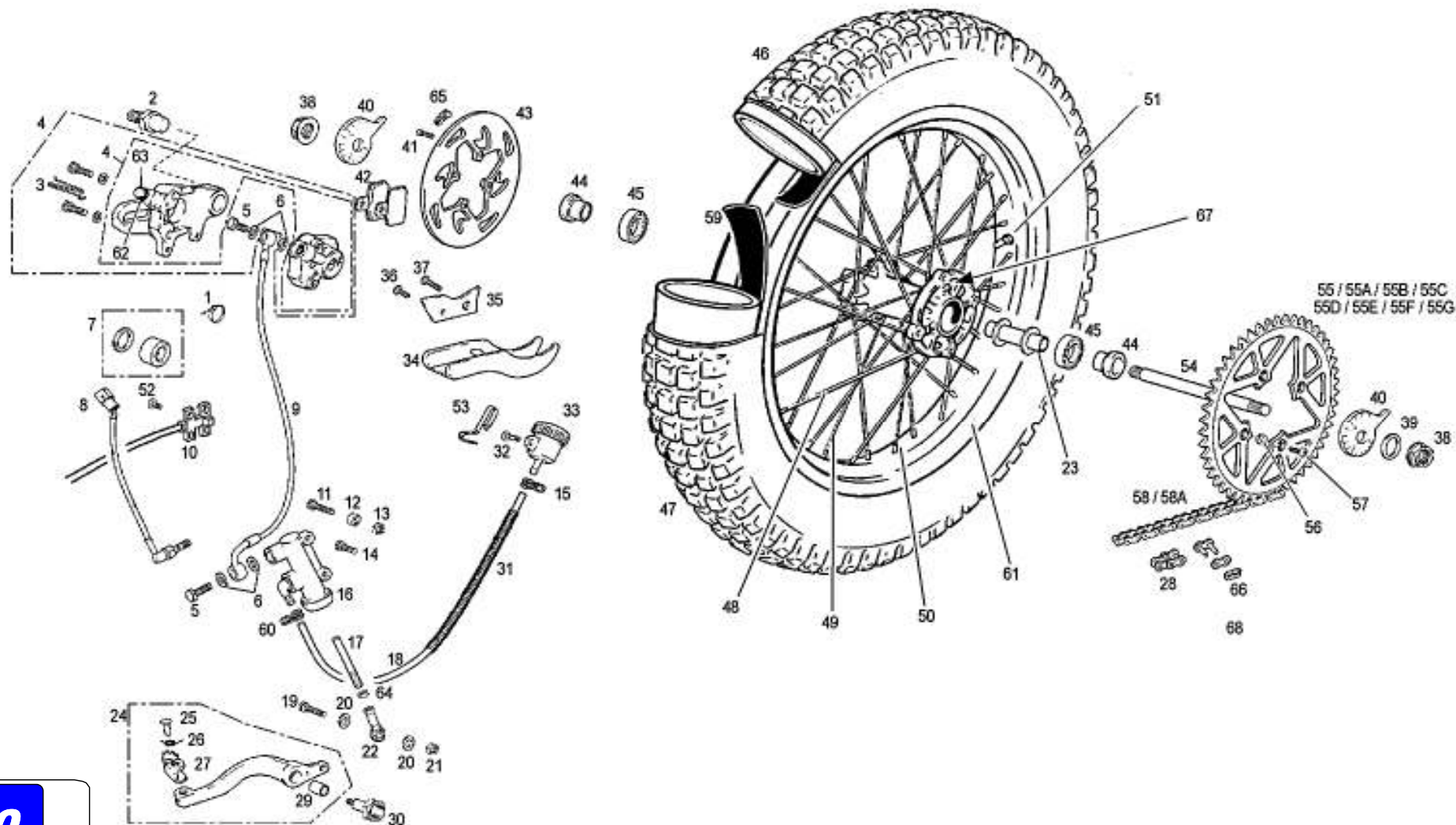
[illegible]



GAS GAS **Chasis 9**

**Rueda trasera /
Rear wheel**

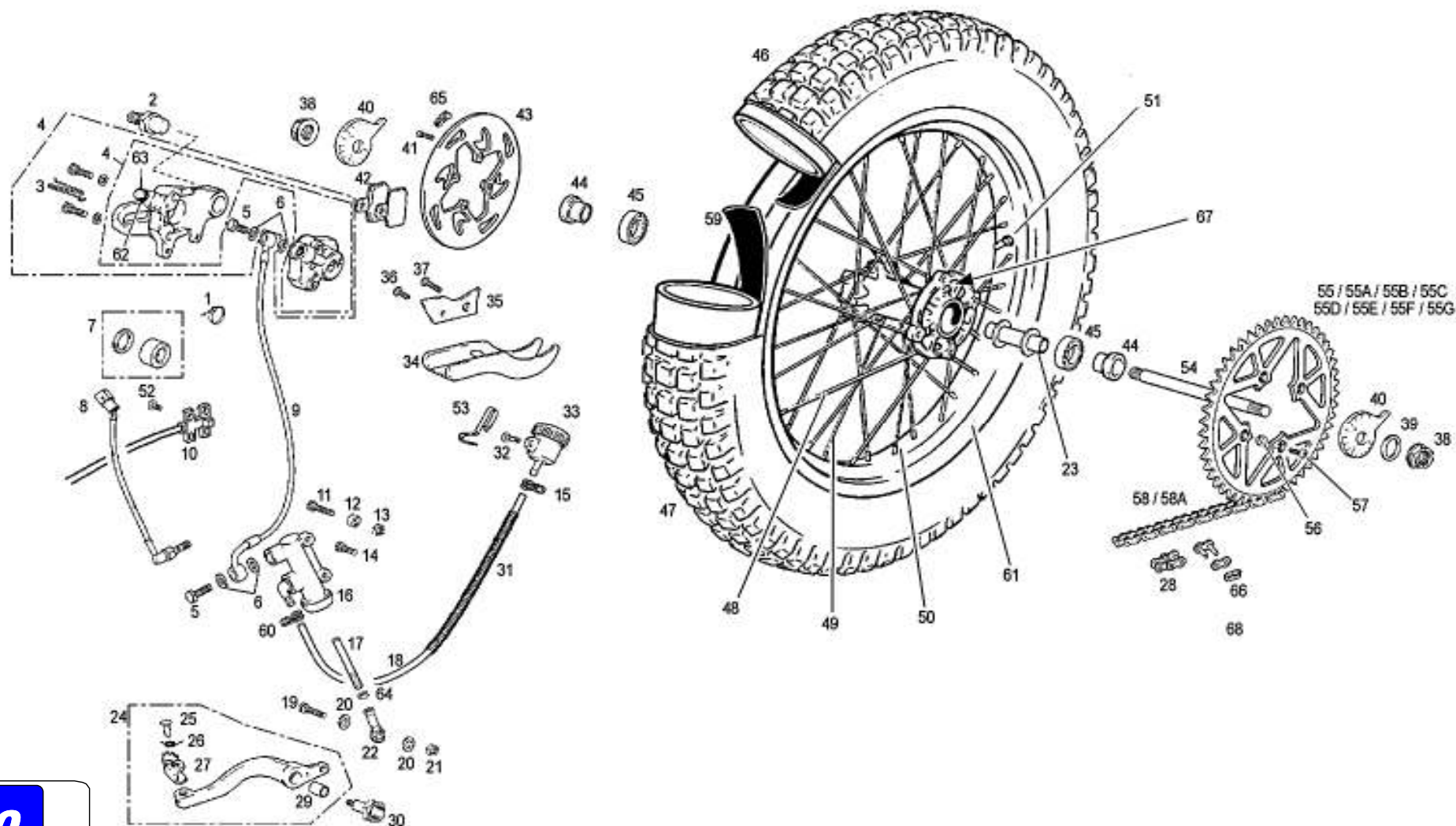
GAS GAS

TXT PRO 2008

Nº	DESCRIPCION / DESCRIPTION	125	200	250 / 280	300	Cant.
1	BRIDA UNEX CORTA 2221-0 2,5X98 / 0 2.5X98 / CABLE TIES 2.5X98	-	-	BE25634010	-	1
2	CASQUILLO CENTRADOR PINZA / SPACER BUSHING	-	-	BT280222049	-	1
3	CHAVETA SUJECCIÓN PASTILLA / KEY SPACER BRAKE PADS	-	-	R250000	-	1
4	PINZA FRENO TRASERA / CALIPER BRAKE REAR	-	-	BT280222001	-	1
5	TORNILLO LATERAL BOMBA FRENO TRASERO / BOLT PRESSURE HOSE	-	-	R320000	-	2
6	ARANDELA AL. 10X14X1.5 / WASHER 10X14X1.5	-	-	BT280422007	-	4
7	KIT REPARACIÓN PINZA FRENO / REPAIR KIT BRAKE PAD	-	-	BT280222202	-	1
8	INTERRUPTOR STOP HOMOLOGADO / STOP INTERRUPTOR HOMOL.	-	-	BEP250234003	-	1
9	LATIGUILLO FRENO TRASEO / REAR BRAKE HOSE	-	-	BT280222004	-	1
10	REENVÍO / HALL SENSOR	-	-	BT280634050	-	1
11	TORNILLO 6X25 / 6X25 BOLT	-	-	T0206025	-	1
12	CASQUILLO SEPARADOR FRENO TRASERA / REAR BRAKE PUMP SPACER	-	-	BT280226240	-	1
13	TUERCA CON ARANDELA M6 (DIN 6923) ESTRIADA / M6 NUT WITH WASHER	-	-	T2206000	-	2
14	TORNILLO ESPECIAL 6X14 / 6X14 SPECIAL SCREW	-	-	T0206014	-	1
15	ABRAZADERA ELÁSTICA ALAMBRE / ELLASTIC SPRING	-	-	L200036	-	2
16	BOMBA FRENO TRASERO / REAR BRAKE PUMP	-	-	BT280222010	-	1
17	VARILLA FRENO TRASERA TRIAL 2002 / BRAKE ROD	-	-	BT280222062	-	1
18	TUBO SOBRANTE RAD. 5X8 (39cm) / RADIATOR HOSE 5X8 (39cm).	-	-	BE25632009	-	1
19	ULS 6x25 / 6x25 ULS BOLT	-	-	T0556025	-	1
20	ARANDELA PLANA 6X12X1.5 / WASHER 6X12X1.5	-	-	T4006012	-	1
21	TUERCA AUTOBLOCANTE DIN-6926 C/ARAND. ZN / SCREW	-	-	T2206002	-	1
22	RÓTULA PEDAL FRENO / BRAKE PEDAL BALL-AND-SOCKET JOINT	-	-	BT280222053	-	1
23	CASQUILLO SEPARADOR 390.80.221 / BUSHING	-	-	BT280218052	-	1
24	CTO. PEDAL FRENO TRASERO / REAR BRAKE PEDAL SET	-	-	BT27922016CT	-	1
25	REMACHE PUNTERA PEDAL FRENO / BRAKE PEDAL END RIVET	-	-	BE25922018	-	1
26	MUELLE PUNTERA PEDAL / SPRING PEDAL, END GEAR CLEVER	-	-	ME25636029	-	1
27	PUNTERA PEDAL FRENO / TOE PEDAL BRAKE	-	-	BT27922017	-	1
28	ENGANCHE CADENA IRIS 520 RXL / CHAIN SPLIT LINK	-	-	BT280310066	-	1
29	GLACIER PEDAL FRENO 1215PD10 / GLACIER BRAKE PEDAL	-	-	C200101	-	1
30	CASQUILLO TORNILLO PEDAL FRENO TRIAL / SCREW BUSHING	-	-	BT280610302	-	1
31	MUELLE DESVAPORIZADOR / SPRING BREATHER	-	-	M150000	-	1
32	ULS 6x14 CON ARANDELA / 6X14 ULS WITH WASHER	-	-	T0556014	-	1
33	DEPÓSITO LÍQUIDO FRENOS / BRAKE LIQUID TANK	-	-	BT280410016	-	1

GAS GAS

Chasis 10



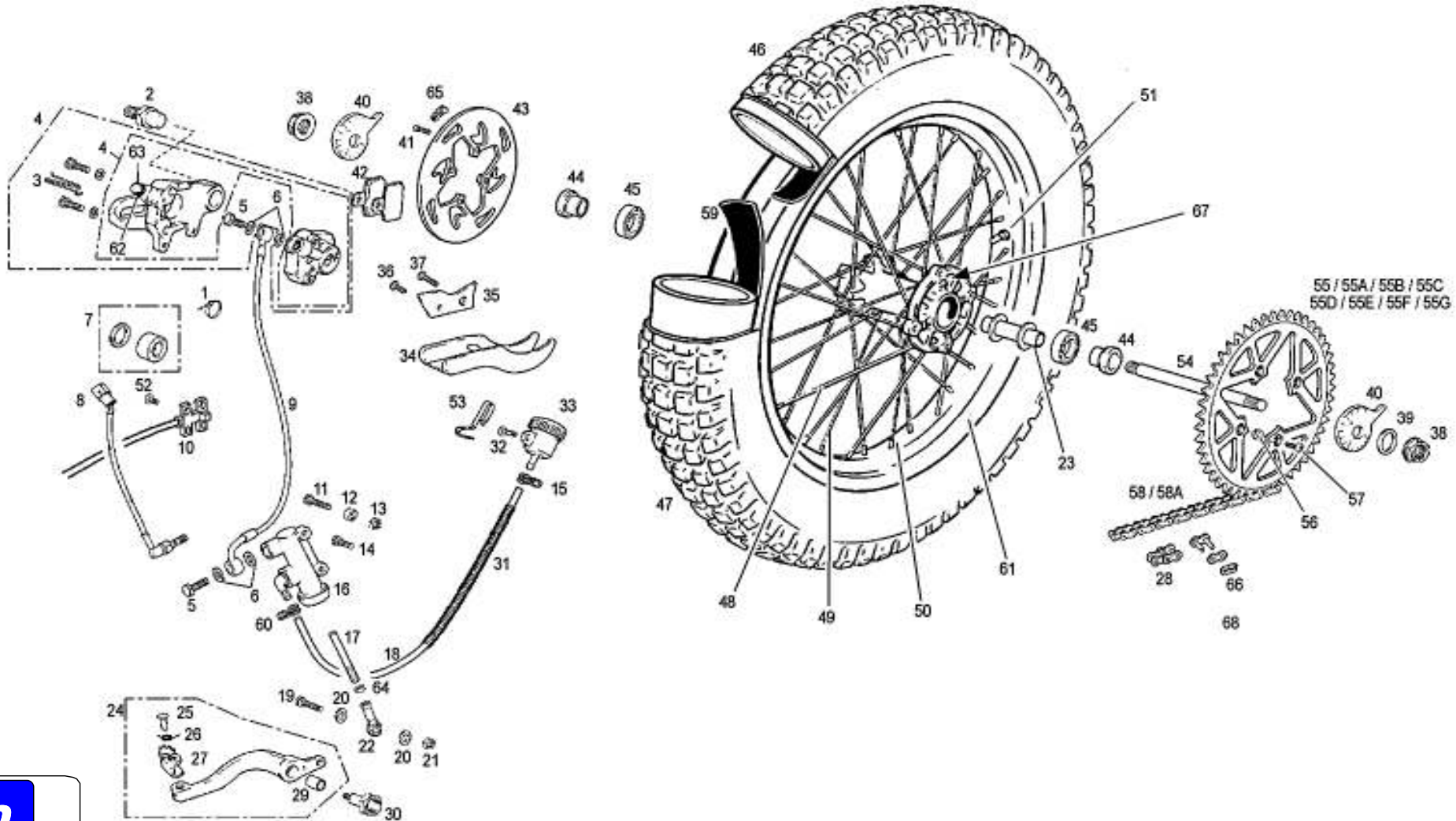
Nº	DESCRIPCION / DESCRIPTION	125	200	250 / 280	300	Cant.
34	PROTECTOR DISCO TRASERO 2001 / BRAKE DISC PROTECTOR	-	-	BT280128012	-	1
35	SOPORTE PROTECTOR DISCO TRASERO / BRAKE DISC PROTECTOR SUPPORT	-	-	BT280222051	-	1
36	ULS 5X12 / 5X12 ULS	-	-	T0505012	-	1
37	TORNILLO ULS 6X20 / 6X20 ULS BOLT	-	-	T0506020	-	1
38	TORNILLO EJE RUEDA TRASERA / REAR WHEEL AXLE BOLT	-	-	BT280718023	-	2
39	ARANDELA EJE TRASERO 17X30X1,5 DIN 137 / REAR WASHER	-	-	BT280436014	-	1
40	EXCÉNTRICA TRASERA IZQ. / LEFT REAR SAIL CAM ADJUSTER	-	-	BT280718022L	-	2
41	ALLEN 6X18 / 6X18 SCREW	-	-	T0206020	-	4
42	PASTILLA FRENO TRASERA / REAR BRAKE PADS	-	-	BT280222068	-	2
43	DISCO FRENO TRASERO TRIAL 2003 / REAR BRAKE DISK	-	-	BT280322012	-	1
44	DISTANCIADOR RUEDA TRASERA 7.5MM / REAR SPACER WHEEL	-	-	BT280218021	-	2
45	COJINETE 6004 / BEARING	-	-	C160001	-	2
46	CUBIERTA TRASERA 400X18 TBLS / REAR WHEEL TYRE	-	-	N200100	-	1
47	RUEDA TRASERA TRIAL / TRIAL REAR WHEEL	BT280718100	BT280718100	BT55000CT2808	BT5500CT2808	1
48	RADIO 3.4X220 RUEDA TRASERA TRIAL / REAR SPOKE	-	-	BRT500118014	-	16
49	RADIO 3.4X215 RUEDA TRASERA TRIAL / REAR SPOKE	-	-	BRT500118015	-	16
50	TUERCA RADIOS 3.5MM. RUEDA TRASERA / REAR SPOKE NUT	-	-	BT27718016	-	32
51	VÁLVULA / AIR VALVE	-	-	N200110	-	1
52	ULS 6X10 / 6X10 ULS	-	-	T0506010	-	1
53	SOPORTE DEPÓSITO LÍQUIDO DE FRENO / BRAKE FLUID TANK SUPPORT	-	-	BT280410943	-	1
54	CTO. EJE RUEDA TRASERA CON EXCENTRICA / REAR WHEEL AXLE SET WITH CAM ADJUSTER	-	-	BT280718020CT	-	1
55	CORONA TRIAL SXX1 / SPROCKET	-	-	BT280218034	-	1
55A	CORONA Z43 / SPROCKET	-	-	BT280218024	-	1
55B	CORONA Z41 / SPROCKET	-	-	BT280318024	-	1
55C	CORONA Z44 / SPROCKET	-	-	BT120218034	-	1
55D	CORONA Z46 / SPROCKET	-	-	BT200218034	-	1
55E	CORONA Z48 / SPROCKET	-	-	BT120518034	-	1
55F	CORONA Z42 GOLD / SRPOCKETT	-	-	BT280218034AM	-	1
55G	CORONA RENTHAL / RENTHAL SPROCKET	-	-	BT280718034	BT280718034	1
56	TUERCA AUTOBLOCANTE M8 BAJA / LOW SELF-LOCK NUT	-	-	T2108001	-	1
57	ULS 8X20 PLAT. PROT. / 8X20 ULS	-	-	T0508022	-	1
58	CADENA TRIAL / TRIAL CHAIN	-	-	BT280310036	-	1
58A	CADENA TRIAL 520 RXL 104 PASOS / CHAIN	-	-	BT120210036	-	1

GAS GAS

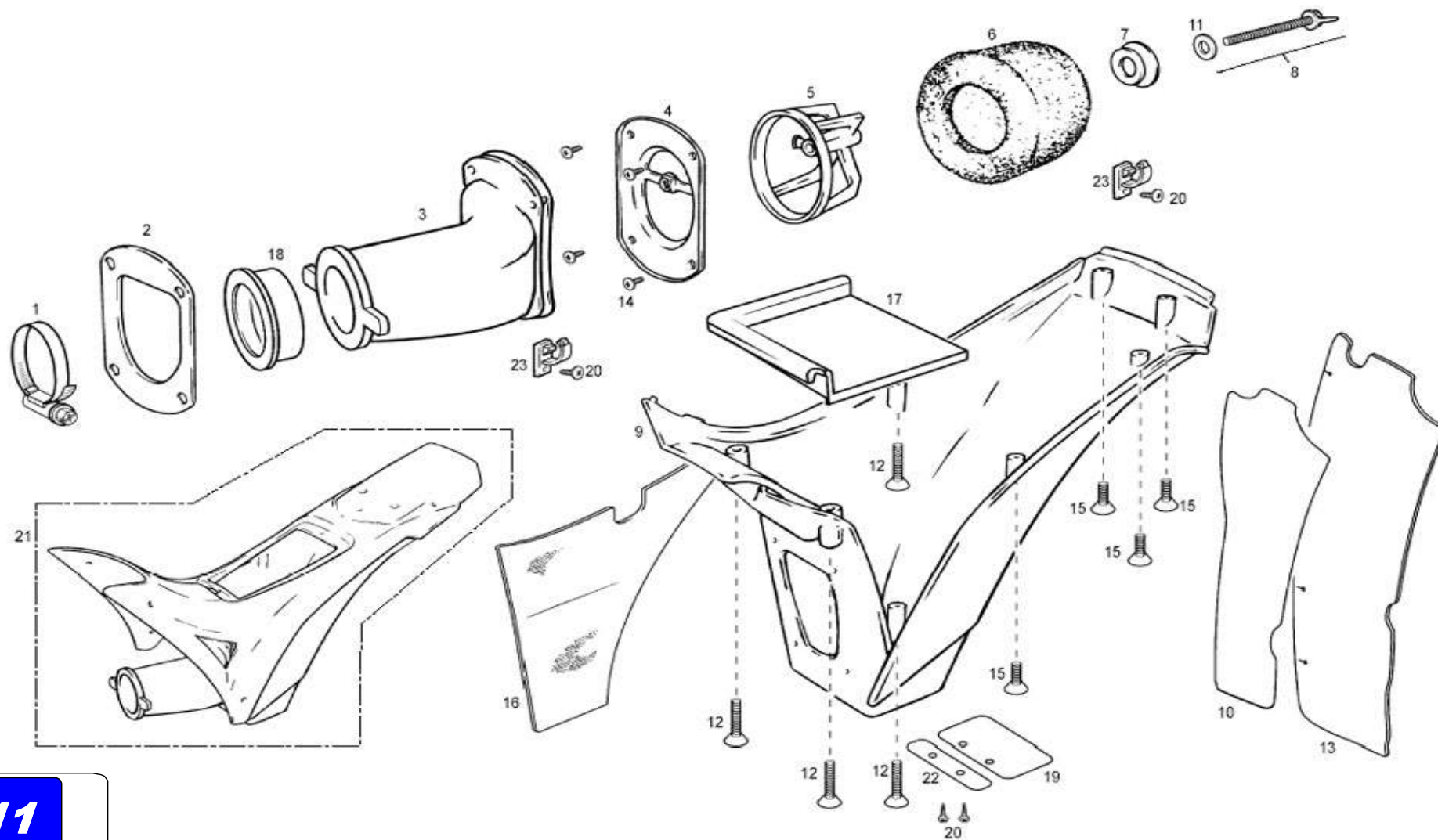
Chasis 10

Rear wheel

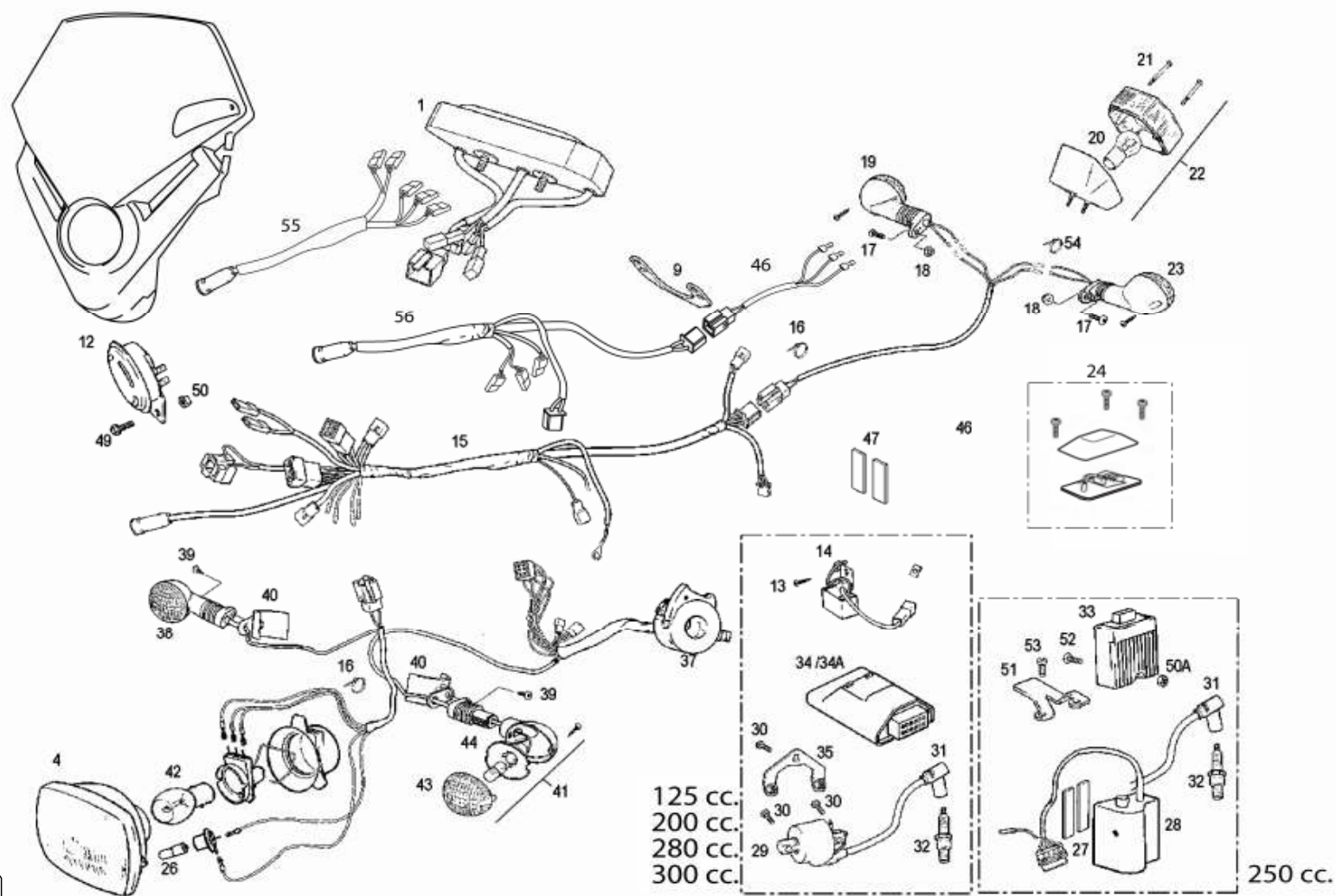
GAS GAS

TXT PRO 2008

[illegible]



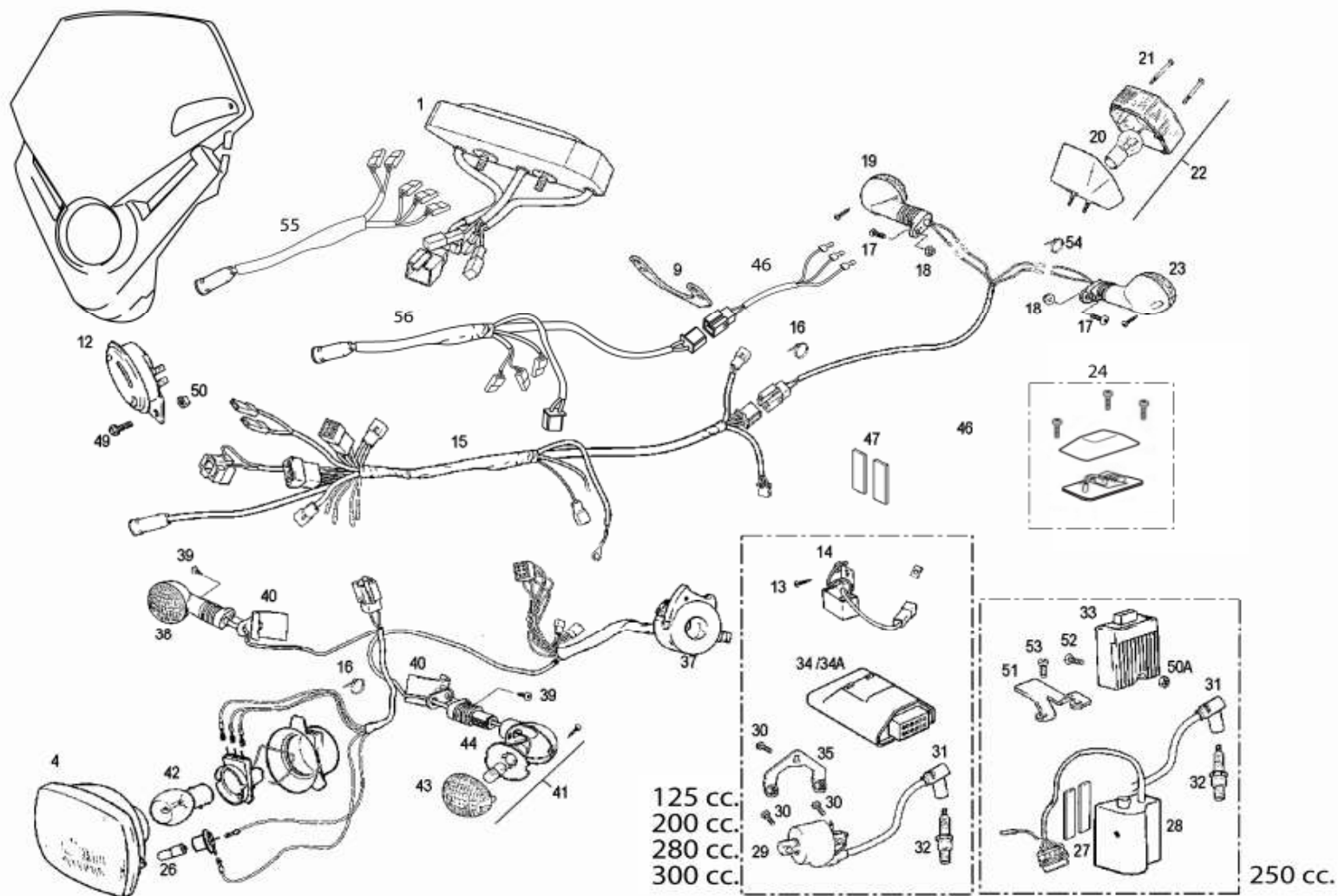
[illegible]



Nº	DESCRIPCION / DESCRIPTION	USA	125 RACING	125 / 200 / 280 / 300	250	Cant.
1	MULTIFUNCIÓN TRIAL / TRIAL MULTIFUNCTION		BT280634005	-	BT280634005	1
7	BOMBILLA 12V 1,2-9W / 12V 1,2-9W BULB		L300123	L300123	L300123	3
9	SOPORTE CUENTA KM. / KM. COUNTER SUPPORT		-	-	BT280634045	1
12	CTO. CLAXON PE40065G11 / HORN ASSY		L300105	-	L300105	1
13	TORNILLO ESPECIAL 6X14 / 6X14 SPECIAL SCREW	T0206014	T0206014	T0206014	-	1
14	REGULADOR ALTERNADOR / ALTERNATOR REGULATOR	L300031	L300031	L300031	-	1
15	INSTALACIÓN TRIAL / TRIAL INSTALLATION		BT280634014	BT280634014	BT280634014	1
16	BRIDA UNEX MEDIANA / UNEX CLAMP	BE25634009	BE25634009	-	BE25634009	3
17	ULS 6X16 NEGRO / 6X16 ULS BLACK BOLT		T0506016N	-	T0506016N	2
18	TUERCA CON ARANDELA M6 / M6 NUT WITH WASHER		T2206000	-	T2206000	2
19	INTERMITENTE DERECHO TRASERO / RIGHT REAR INDICATOR		BT2806340/8	-	BT2806340/8	1
20	BOMBILLA 12V 5-21W / 12V 5-21W BULB		L300116	-	L300116	1
21	CRISTAL FARO TRASERO HOMOLOGADO / HOMOL. REAR LIGHT CAP		BP25734115	-	BP25734115	1
22	FARO PILOTO TRIAL HOMOLOGADO / HOMOL. TRIAL REAR LIGHT SET		BP27534015	-	BP27534015	1
23	INTERMITENTE IZQUIERDO TRASERO / LEFT REAR INDICATOR		BT2806340/9	-	BT2806340/9	1
24	FARO PILOTO TRIAL / TRIAL REAR LIGHT SET	EE300002808	EE300002808	-	EE300002808	1
25	TORNILLO ROSCA CHAPA 3.5X13 / BOLT 3.5X13	T0603513	T0603513	-	T0603513	3
26	LÁMPARA 12V3W BIFARO AM0518 / 12V 3W LAMP		L300119	-	L300119	1
27	TIRA ADHESIVA 45MM. CAJA FILTRO EC2003 / STICKER 45MM.			-	BE250328039	2
28	CTO. CDI 432 40 2402 TRIAL PRO RACING / CDI 432			-	MT250734007CT	1
29	BOBINA KOKUSAN IG3815 / KOKUSAN ELECTRIC COIL	M02812110	M02812110	M02812110	-	1
30	ALLEN 6X16 / ALLEN 6X16 BOLT	T0306016	T0306016	T0306016	-	3
31	PIPA BUJÍA IB05EMH = BT27934000 / SPARK PLUG	BT280634000	BT280634000	-	BT280634000	1
32	BUJÍA BPR5ES / SPARK PLUG	M04012000	M04012000	-	M04012000	1
33	REGULADOR RECTIFICADOR DUCATI / REGULATOR				MT300534009	1
34	CDI DIGITAL CU77516 TRIAL 125/200 2005 / TRIAL 2005 DIGITAL CDI	MT120534007 (125,200)	MT120534007 (125,200)	MT120534007 (125,200)		1
34A	CDI DIGITAL CU7510 TRIAL 250/280 2005 / TRIAL 2005 DIGITAL CDI	MT280534007 (280,300)		MT280534007 (280,300)		1
35	SOPORTE BOBINA KOKUSAN TRIAL PRO 2005 / COIL SUPPORT	BT280510941	BT280510941	BT280510941	-	1
36	ALLEN 6X14 / 6X14 ALLEN			T0306014	T0306014	1
37	CONMUTADOR LUZ TT-97 / LIGHT SWITCH	ET602002808	BE25734001	BE25734001	BE25734001	1
38	INTERMITENTE DERECHO DELANTERO / FRONT RIGHT INDICATOR		BT2806340/8	-	BT2806340/8	1
39	TORNILLO PHILIPS ROSCA-CHAPA 6.3x16 NEGRO / 6.3X16 CLACK SCREW		T0706316	-	T0706316	2
40	SOPORTE INTERMITENTE DELANTERO / FRONT INDICATOR SUPPORT		BE250134017	-	BE250134017	2

GAS GAS

Chasis 12

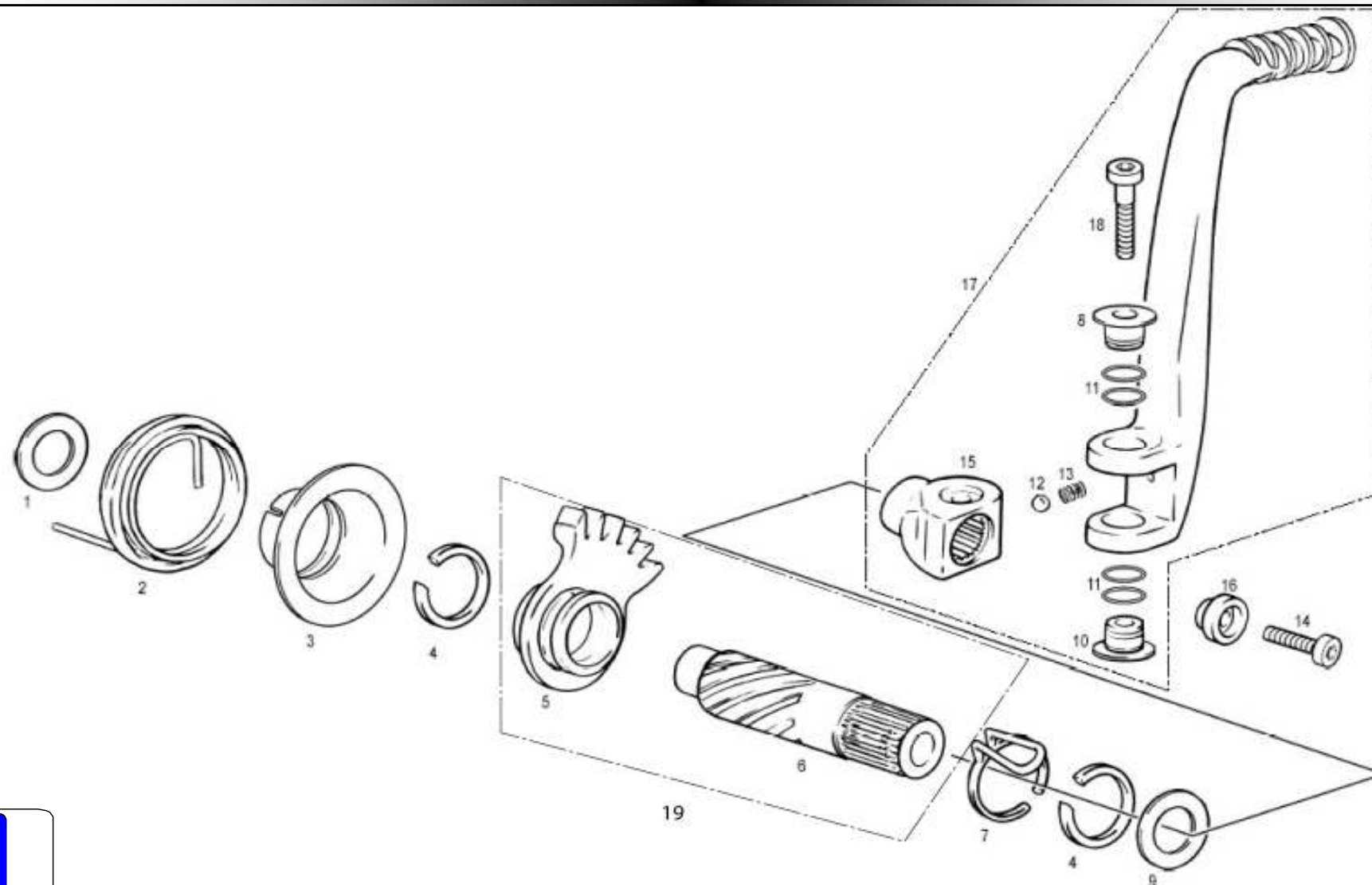


[illegible]

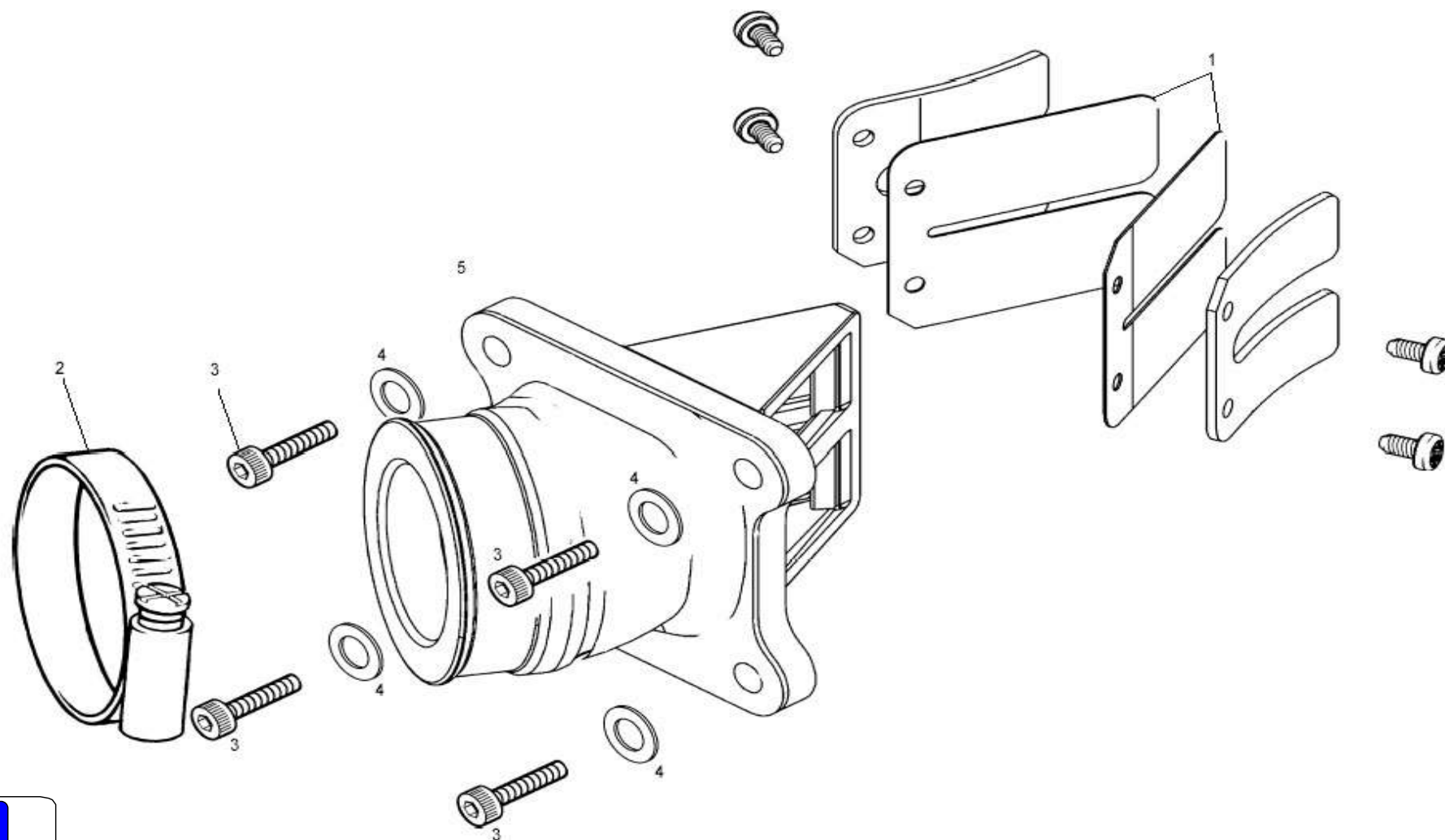
**Conjunto pedal arranque /
Kickstar set Rear wheel**

GAS GAS

TXT PRO 2008



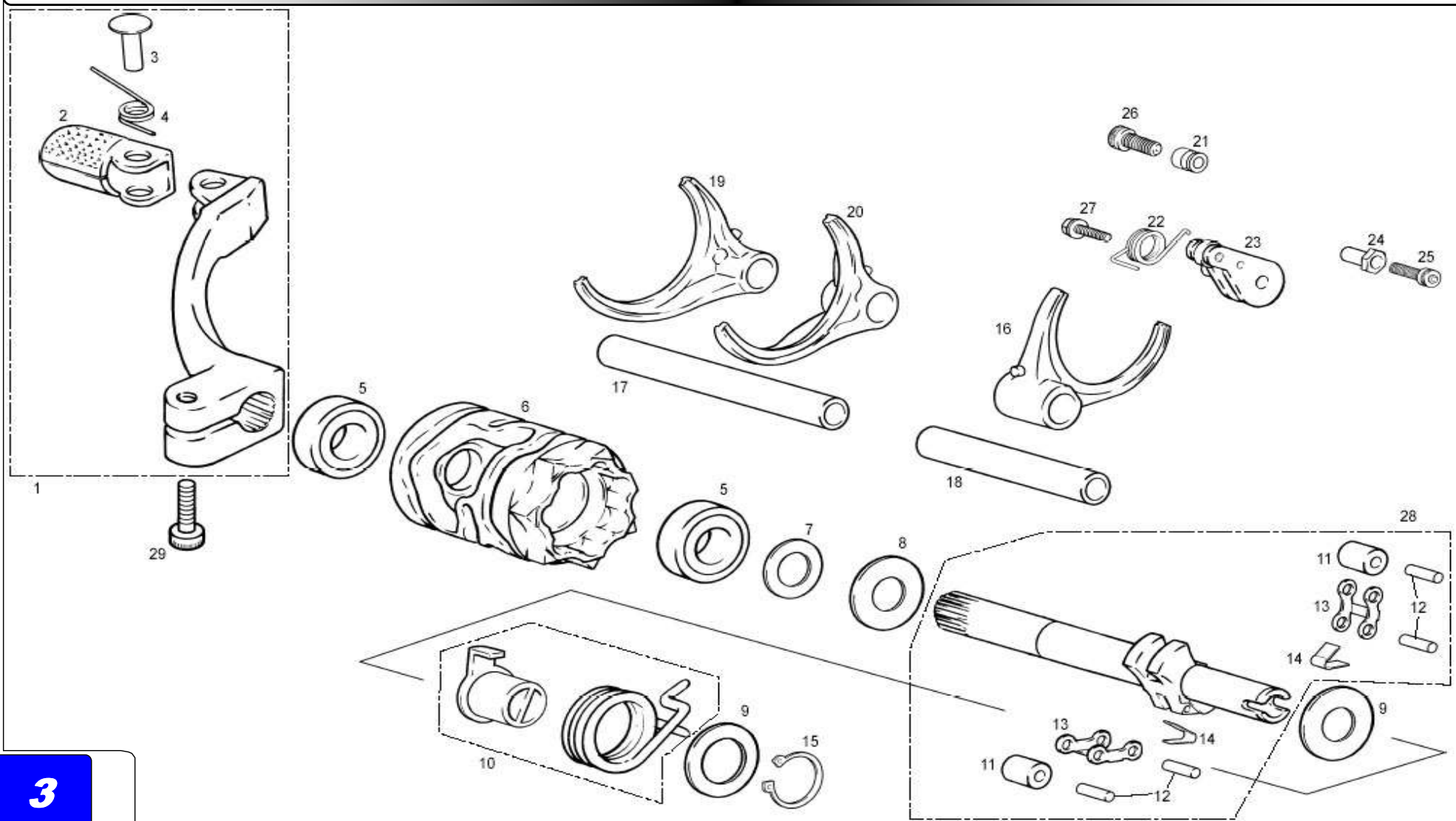
[illegible]***GAS GAS***



Nº	DESCRIPCION / DESCRIPTION	PRO2007	Cant
1	JUEGO LÁMINAS ADMISIÓN / REEDS SET	MT280416041	1
2	ABRAZADERA S/44/9 W1 / CLAMP	BT28032838	1
3	ALLEN 5X15 DACROMET / 5X15 DACROMET ALLEN BOLT	T0305015	4
4	ARANDELA 5X12X1,5 / 5X12X1,5 WASHER	T4005012	4
5	CAJA LÁMINAS TRIAL 2004 / REED BLOCK ASSY	MT250002808	1
6	ADAPTADOR TUBERA / RUBBER ADAPTATOR	MO300616133	
7	TUBERA ADM.TRIAL ALUMINIO / ALUMINIUM ADM.TRIAL RUBBER	MO300616131	
8	JUNTA CAJA LÁMINAS-TUBERA / REED VALVE GASKET - RUBBER	MT300644105	
9	CAJA LÁMINAS 250-270-280-320 / 250-270-280-320 REED VALVE	MO1617200	
10	JUNTA TUBERA / RUBBER GASKET	MO4416003	
* pertenecen a carburador keihin			

GAS GAS

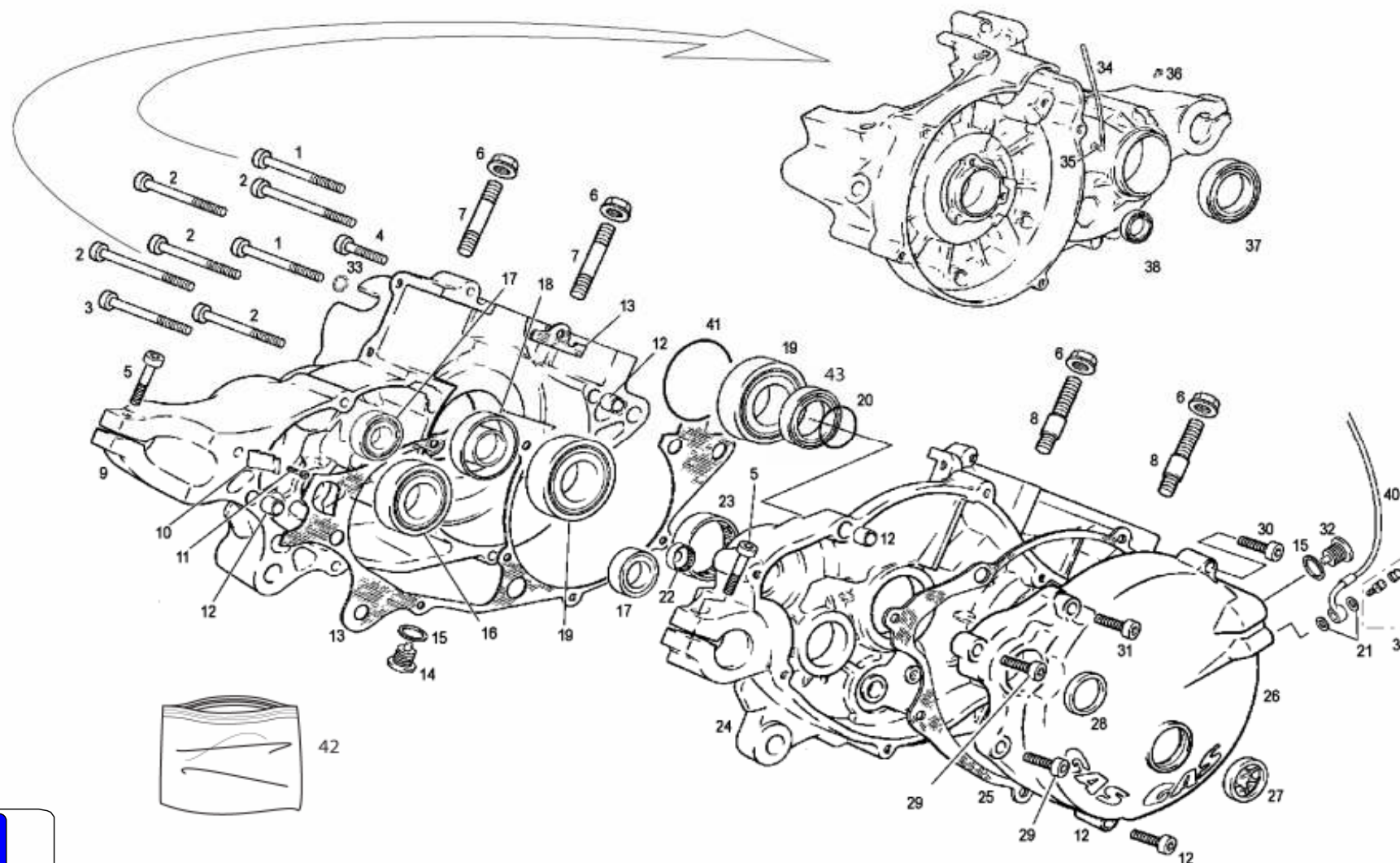
Motor 2



Nº	DESCRIPCION / DESCRIPTION	PRO2007	Cant.
1	CTO. PEDAL CAMBIO / GEAR PEDAL COMPLETE	MT280238026	1
2	PUNTERA PEDAL CAMBIO / GEAR PEDAL END	ME25636027	1
3	REMACHE PUNTERA CAMBIO / RIVOT PEDAL END	ME25636030	1
4	MUELLE PUNTERA PEDAL CAMBIO / PEDAL END SPRING	M121000	1
5	COJINETE 12X24X6 2Z DESMO / 12X24X6 2Z DESMO BEARING	MT280238032	2
6	DESMODRÓMICO / SHIFT DRUM	MT280238031	1
7	ARANDELA 12,2X18X0,5 / 12,2X18X0,5 WASHER	T4001218	1
8	ARANDELA 12,2X24X0,5 / 12,2X24X0,5 WASHER	T4001224	1
9	ARANDELA 10,2X24X0,5 / 10,2X24X0,5 WASHER	T4011024	2
10	POSICIONADOR Y MUELLE EJE SELECTOR / SHIFT SHAFT CENTER LOCATOR AND SPRING	MT280238037CT	1
11	RODILLO TRINQUETE SELECTOR / RATCHET ROLLER	MT280238040	2
12	AGUJA 3X13,8 / 3X13,8 NEEDLE	MT280238048	4
13	TRINQUETE SELECTOR / RATCHET ARM SELECTOR	MT280238036	2
14	MUELLE TRINQUETE SELECTOR / RATCHET SEL. SPRING	MT280238039	2
15	CIRCLIP E10 EJE / E10 SHAFT CIRCLIP	M03314011	1
16	HORQUILLA PRIMARIA / SHIFT FORK PRIMARY	MT280238009	1
17	EJE HORQUILLA LARGO / LONG FORK SHAFT	MT280238044	1
18	EJE HORQUILLA CORTO / SHORT FORK SHAFT	MT280238045	1
19	HORQUILLA 2-4-5-6 / 2-4-5-6 FORK	MT280238007	1
20	HORQUILLA 1-3 / 1-3 FORK	MT280238008	1
21	TOPE MUELLE FIJADOR / SPRING REST POST	MT280238049	1
22	MUELLE FIJADOR MARCHAS / GEAR SELECTOR SPRING	MT280238034	1
23	FIJADOR MARCHAS / GEAR SELECTOR ARM AND ROLLER	MT280238033	1
24	TOPE MUELLE EJE SELECTOR / SELECTOR SPRING TOP SHAFT	MT280238050	1
25	ALLEN 5X25 DACROMET / 5X25 DACROMET ALLEN BOLT	T0305025	1
26	ALLEN 5X20 / 5X20 ALLEN	T0305020	1
27	HEXAGONAL 5X25 CON ARANDELA / HEXAGONAL BOLT WITH WASHER	BT280010086	1
28	CONJUNTO EJE SELCTOR / SHIFT SHAFT SET	MT280238043	1
29	ALLEN 5X15 / 5X15 ALLEN	T0305015	1

GAS GAS

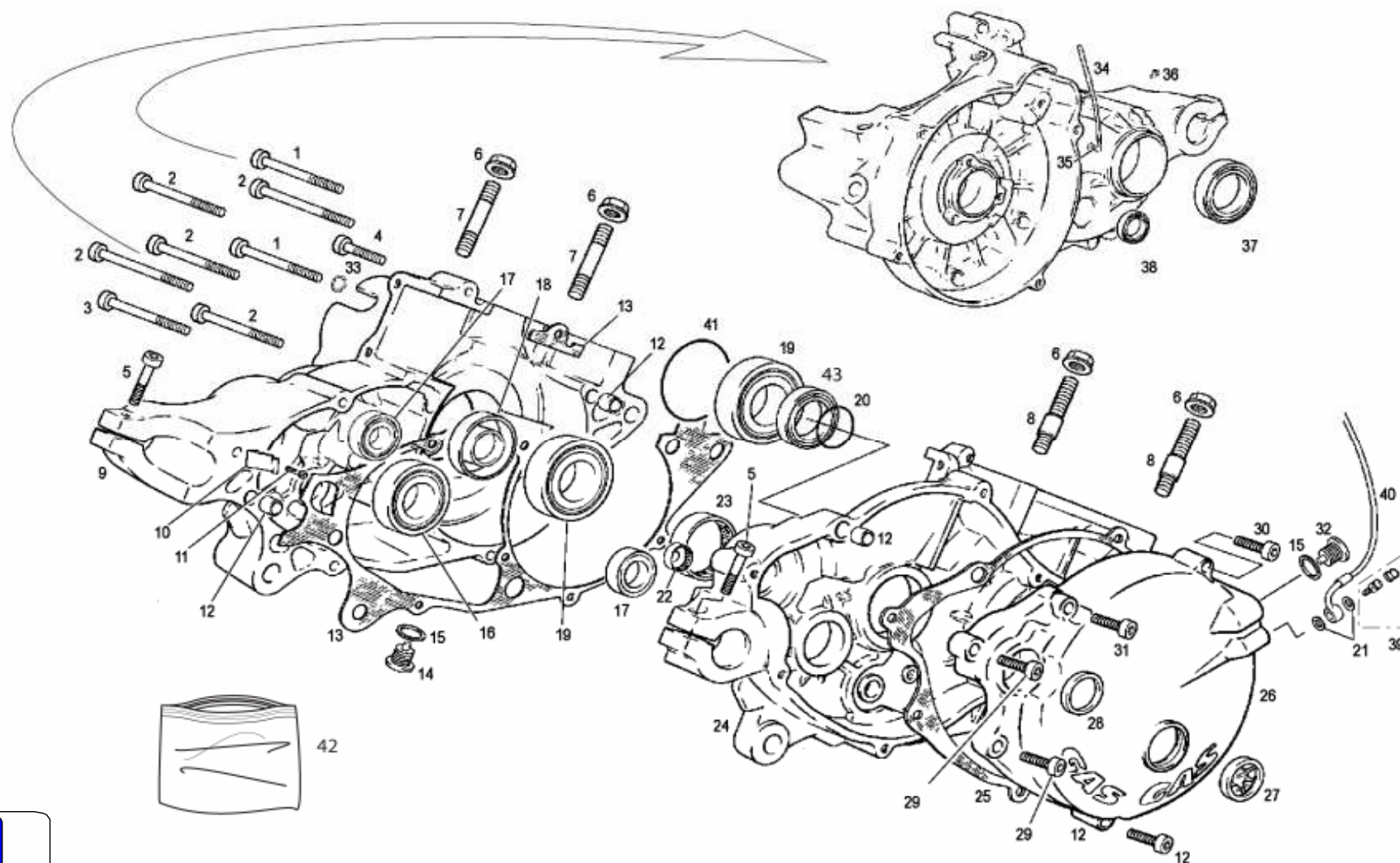
Motor 3



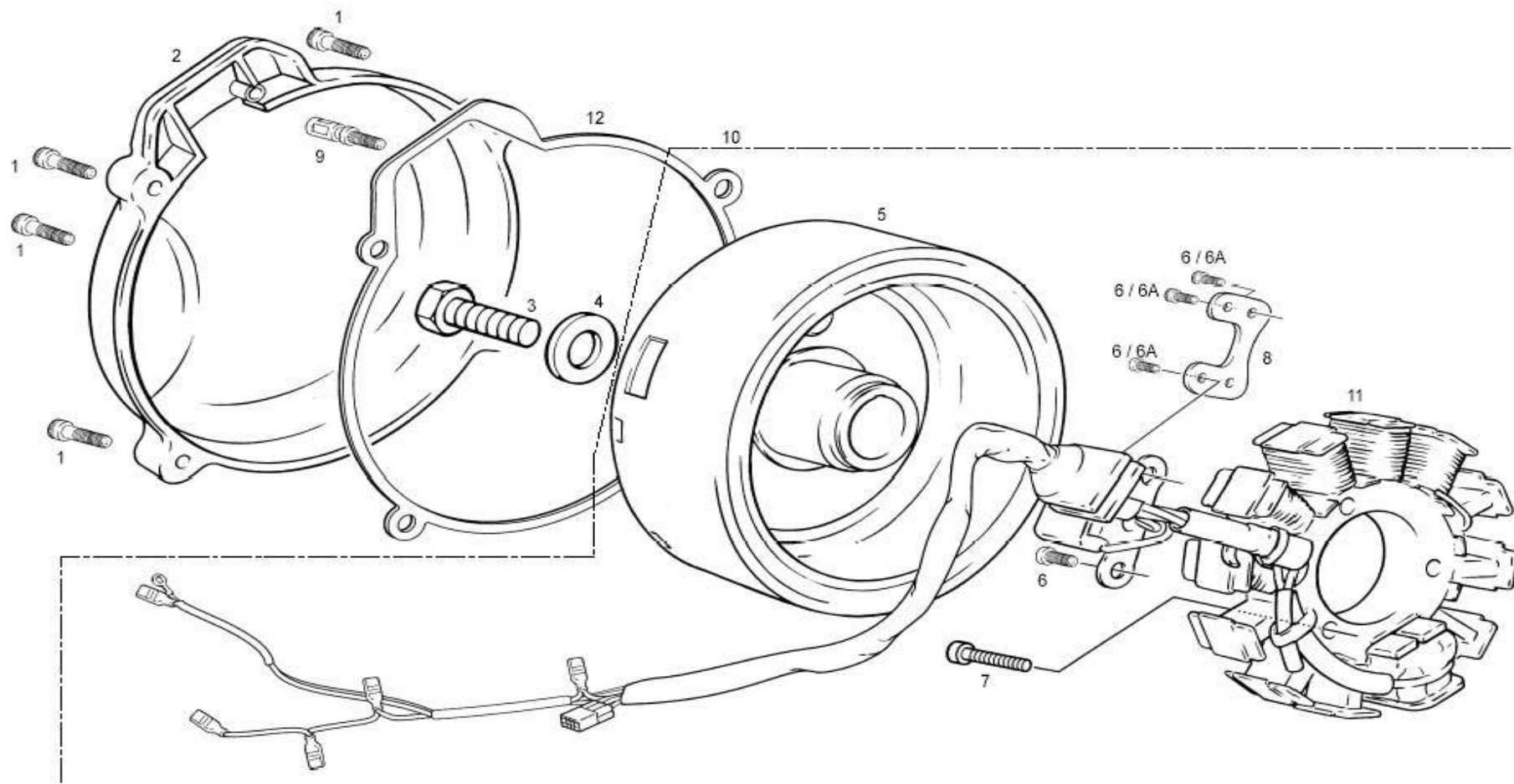
Nº	DESCRIPCION / DESCRIPTION	PRO2007	Cant.
1	ALLEN 5X65 ZINCADO NEGRO / 5X65 BLACK ALLEN BOLT	T0315065	2
2	ALLEN 5X55 ZINCADO NEGRO / 5X55 BLACK ALLEN BOLT	T0305055	5
3	ALLEN 5X75 ZINCADO NEGRO / 5X75 BLACK ALLEN BOLT	T0315075	1
4	ALLEN 5X35 DACROMET / 5X35 DACROMET ALLEN BOLT	T0305035	1
5	ALLEN 5X20 DACROMET / 5X20 DACROMET ALLEN BOLT	T0305020	2
6	TUERCA CILINDRO 8.8 ESP / CILINDER NUT	M01613001	4
7	ESPÁRRAGO CILINDRO / BASE STUD CYLINDER LEFT	MT280216023	2
8	ESPÁRRAGO CON CENTRAJE / BASE STUD CYLINDER RIGHT	MT280216056	2
9	CÁRTER MG. IZQUIERDO TRIAL 2003 / LEFT CRANKCASE HALF	MT280710001	1
10	TOPE ARRANQUE TRIAL / STOP KICKSTART PEDAL	MT280226011	1
11	ALLEN 5X15 DACROMET / 5X15 DACROMET ALLEN BOLT	T0305015	1
12	CASQUILLO CENTRADOR CÁRTER 6X9X14 / CRANKCASE BUSHING	M01017000	4
13	JUNTA CÁRTER CENTRAL 0.2 MM / CENTER CRANKCASE GASKET	MT280344001	1
14	TAPÓN VACIADO ACEITE CON IMÁN / MAGNETIC OIL DRAIN PLUG	ME25610017	1
15	ARANDELA TIPO BUJÍA 12X18X2 / WASHER	MT280410030	2
16	COJINETE 25X47X12 / 25X47X12 / BEARING	MT280236159	1
17	COJINETE 15X32X9 6002 2RSL CAMBIO / BEARING GEAR	MT280236160	2
18	RETÉN 25X35X7 TEFLÓN CIGUEÑAL IZQUIERDO / OIL SEAL CRANK SHAFT	MT280212009	1
19	COJINETE CIGUEÑAL ST5225 / ST5225 CRANKSHAFT BEARING	MT280412006	2
20	TÓRICA 25X1.5 NBR / O-RING	MT280212025	2
21	ARANDELA AM 10X14X1.5 / WASHER	BT280422007	2
22	COJINETE BK1412 ARRANQUE TRIAL / KICKSTART BEARING	MT280226067	1
23	COJINETE 35X45X12 NQ (EJE PRIMARIO) / 35X45X12 BEARING	MT280236158	1
24	CÁRTER MG DERECHO TRIAL 2003 / RIGHT CRANKCASE	MT280710000	1
25	JUNTA TAPA EMBRAGUE / CLUTCH COVER GASKET	MT280244002	1
26	TAPA EMBRAGUE MG TRIAL / CLUTCH COVER	MT280732001	1
27	VISOR NIVEL ACEITE EC400-4T / OIL LEVEL SIGHT GLASS	MFS400110015	1
28	RETÉN 18-24-4 TRIAL 2002 / 18-24-4 4 KICKSTART SHAFT SEAL	MT280226016	1
29	ALLEN 5X25 DACROMET / 5X25 DACROMET ALLEN BOLT	T0305025	2
30	ALLEN 5X30 DACROMET / 5X30 DACROMET ALLEN BOLT	T0305030	2
31	ALLEN 5X40 DACROMET / 5X40 DACROMET ALLEN BOLT	T0305040	1
32	TAPÓN LLENADO ACEITE / OIL FILL PLUG	M01016002	1
33	ARANDELA 5X9X1,5 COBRE / 5X9X1,5 WASHER	T4000509	1

GAS GAS

Motor 4



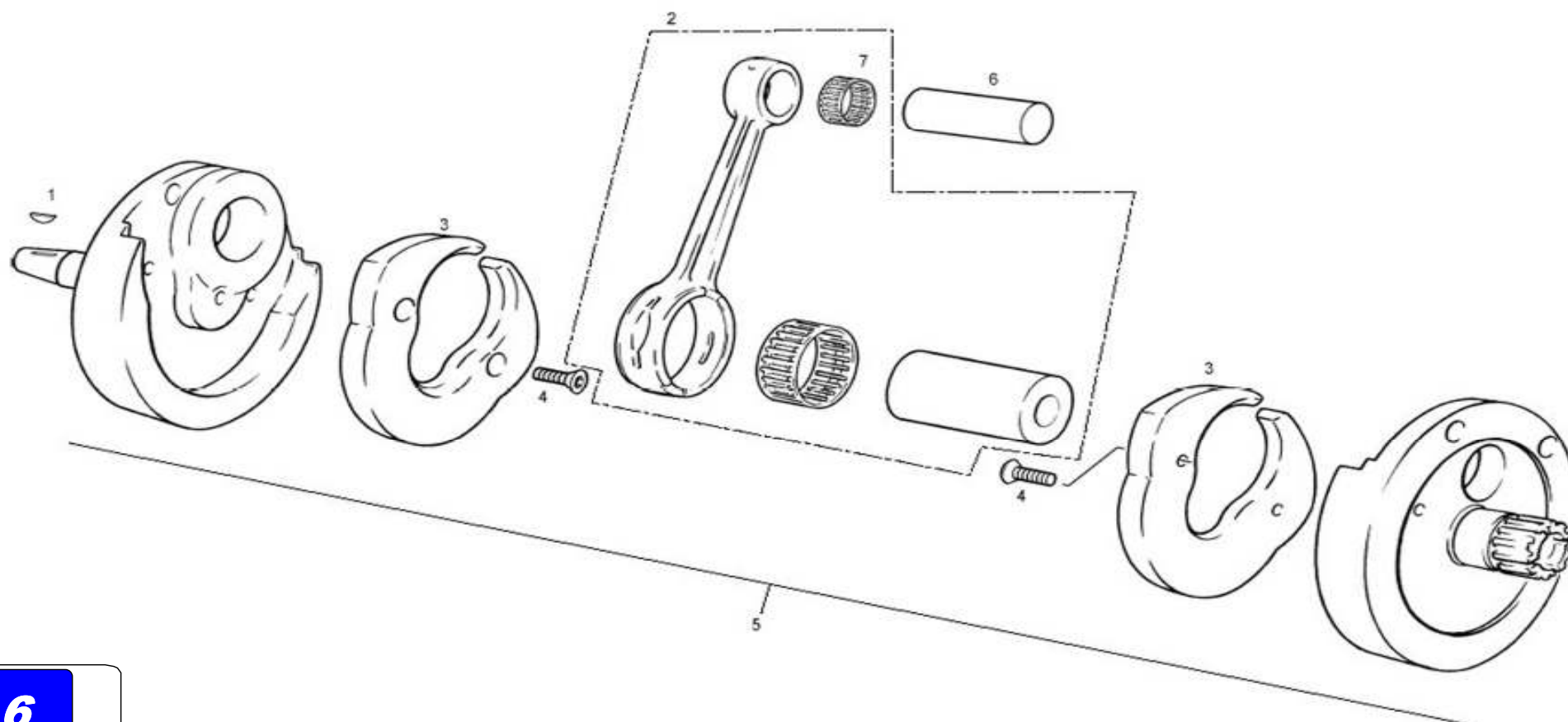
[illegible]



GAS GAS **Motor 5**

Motor 5

125 cc / 200 cc

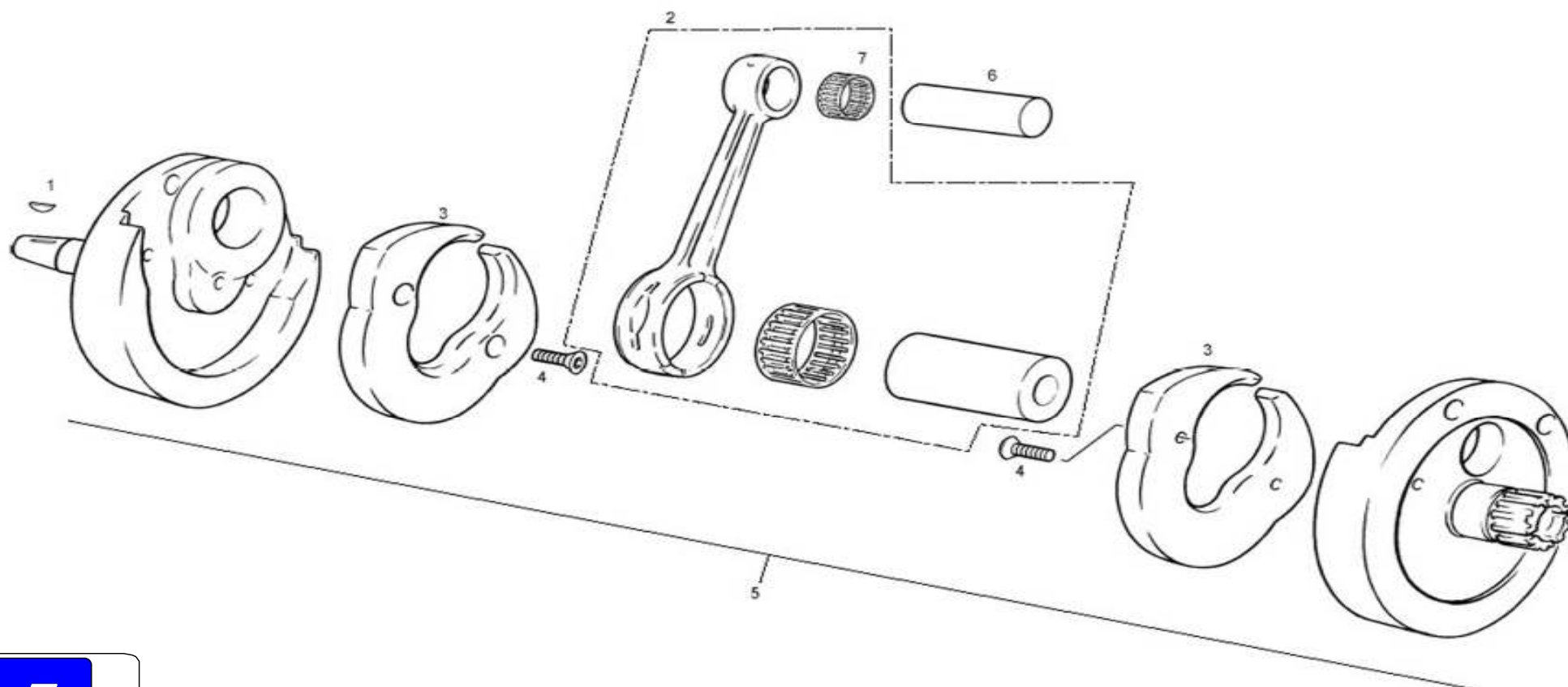


[illegible]

GAS GAS

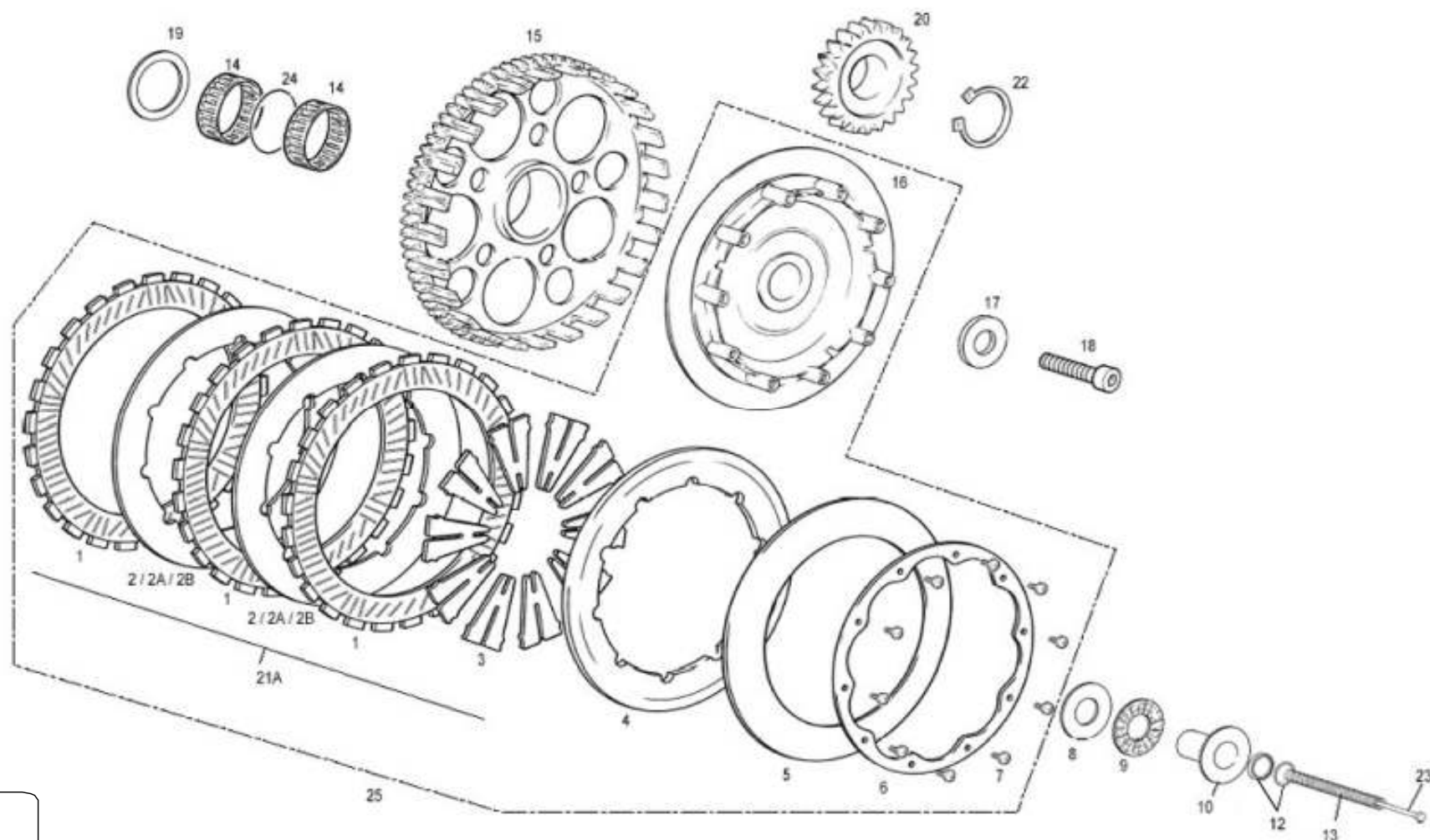
Motor 6

250 cc / 280 cc / 300 cc



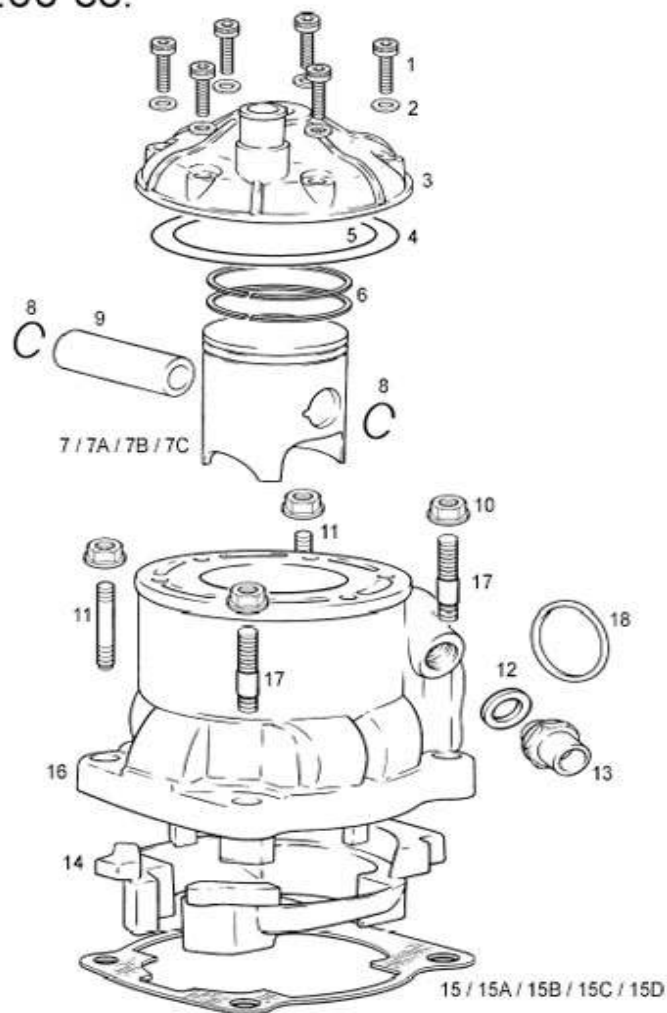
[illegible]***GAS GAS***

Motor 7

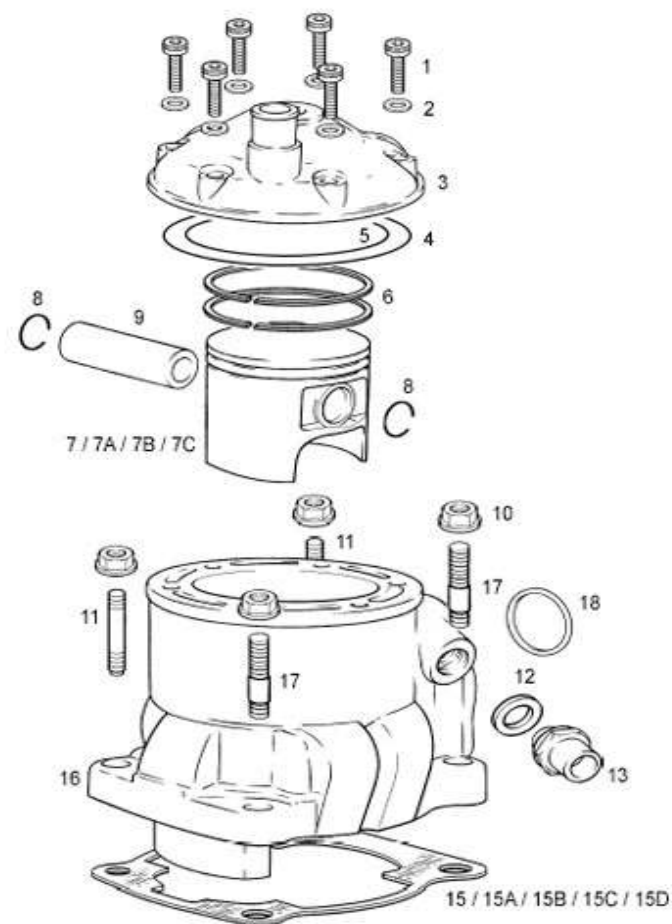


[illegible]**GAS GAS**

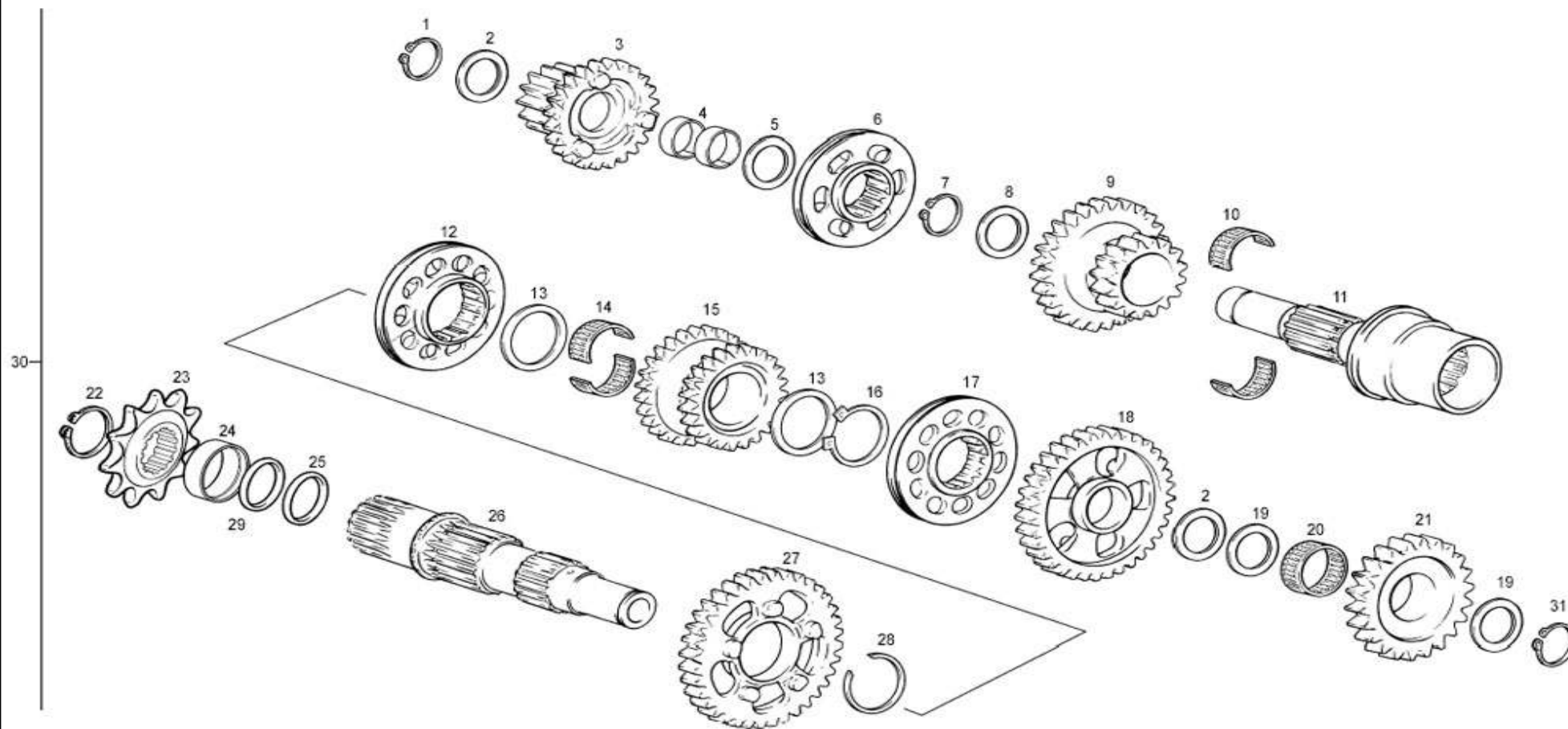
125 cc. / 200 cc.



250 cc. / 280 cc. / 300 cc.



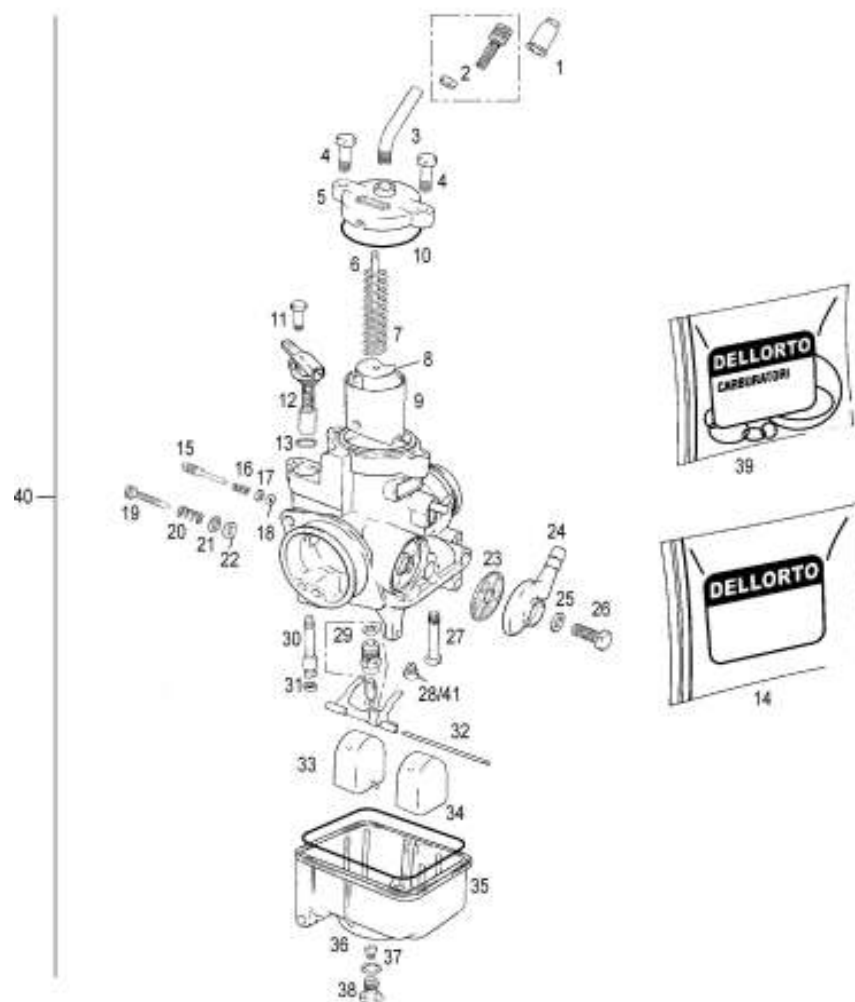
[illegible]**GAS GAS**



Nº	DESCRIPCION / DESCRIPTION	125	200	250 / 280 / 300	Cant.
1	CIRCLIP E15 DIN471 / E15 CIRCLIP	-	-	MT280236163	2
2	ARANDELA 15,2X23X0,5 / 15,2X23X0,5 WASHER	-	-	T4001523	4
3	PIÑÓN 2 / PINION 2	-	-	MT280236071	1
4	DOLLA / BUSHING	-	-	MT280236164	2
5	ARANDELA 17X23X0,5 / 17X23X0,5 WASHER	-	-	T4001723	1
6	DESPLAZABLE PRIMARIO / PRIMARY SELECTOR DISC	-	-	MT280236073	1
7	CIRCLIP E20 DIN 471 REBAJADO / E20 CIRCLIP	-	-	MT280236165	1
8	ARANDELA 20X25X0,5 / 20X25X0,5 WASHER	-	-	T4002025	1
9	PIÑÓN 3 / PINION 3	-	-	MT280236072	1
10	JAULA AGUJAS / NEEDLE BEARING	-	-	MT280236162	2
11	EJE PRIMARIO / PRIMARY SHAFT	-	-	MT280236070	1
12	DESPLAZABLE 2 SECUNDARIO / SECONDARY SELECTOR DISC	-	-	MT280236080	1
13	ARANDELA 22X27X0,5 / 22X27X0,5 WASHER	-	-	T4002227	2
14	JAULA AGUJAS / NEEDLE BEARING	-	-	MT280236161	2
15	PIÑÓN 5 / PINION 5	-	-	MT280236078	1
16	CIRCLIP E22 DIN471 / E22 CIRCLIP	-	-	MT280236166	1
17	DESPLAZABLE 3 SECUNDARIO / SECONDARY SELECTOR DISC	-	-	MT280236079	1
18	PIÑÓN 3 SECUNDARIO / SECONDARY 3 GEAR	-	-	MT280236076	1
19	ARANDELA / WASHER	-	-	M02622001	2
20	JAULA AGUJAS / NEEDLE BEARING	-	-	MT280226015	1
21	PIÑÓN INTERMEDIO ARRANQUE / GEAR, IDLE KICKSTART	-	-	MT280226001	1
22	CIRCLIP E25 / E25 CIRCLIP	-	-	MT280212023	1
23	PIÑÓN CADENA SALIDA / SPROCKET, COUNTERSHAFT	MT120236525	MT120236525	MT280236525	1
24	CASQUILLO RETÉN SALIDA CAMBIO / SHIFT SEAL BUSHING	-	-	MT280236046	1
25	TÓRICA 25X2 NBR / NBR 25X2 O'RING	-	-	ME25632025	1
26	EJE SECUNDARIO / SECONDARY SHAFT	-	-	MT280236075	1
27	PIÑÓN 2 SECUNDARIO / SECONDARY 2 GEAR	-	-	MT280236077	1
28	CIRCLIP SW25 / SW25 CIRCLIP	-	-	MT280236167	1
29	TÓRICA 25X1,5 NBR / 25X1,5 O'RING	-	-	MT280212025	1
30	CTO. CAMBIO TRIAL / TRANSMISSION COMPLETE	-	-	MT280236010	1
31	CLIP DE 15MM PIÑÓN INT. ARRANQUE / 15MM. CIRCLIP	-	-	M02633000	1

GAS GAS

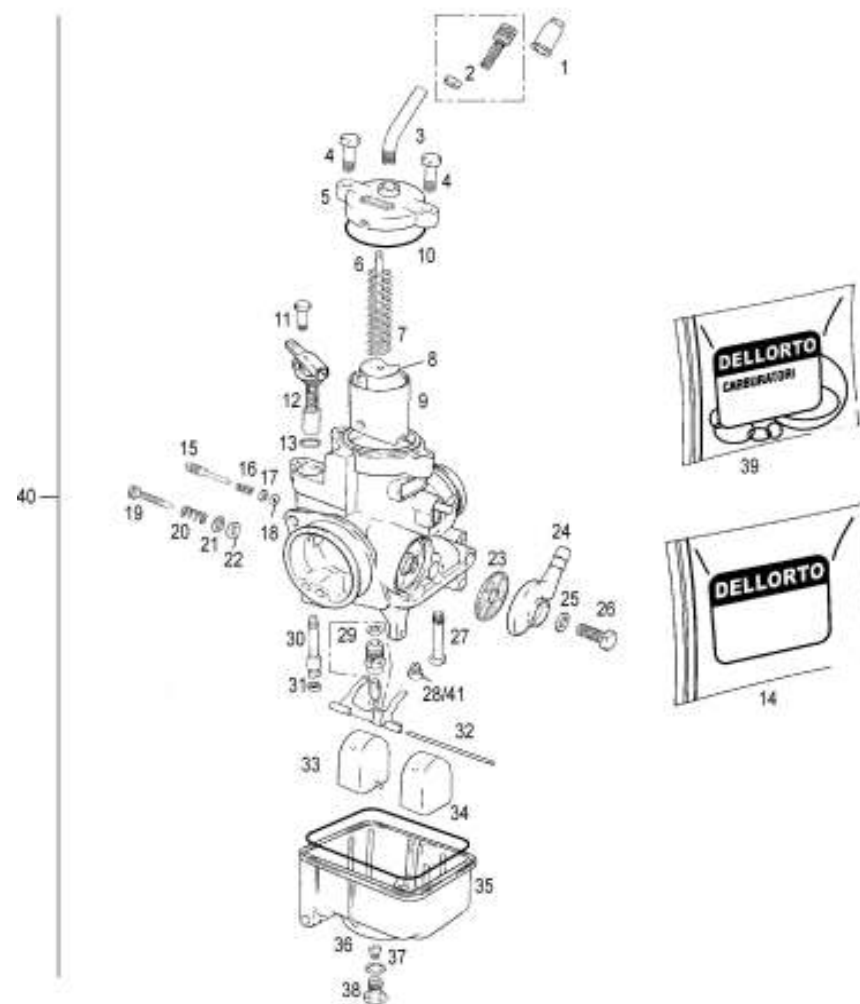
Motor 10



Nº	DESCRIPCION / DESCRIPTION	125 / 200	250 / 280	Cant.
1	CAPUCHÓN TENSOR CABLE GAS / ADJ. TENSION THROTTLE CABLE	-	M09001055	1
2	CTO. TENSOR CABLE / CABLE TENSION SET SCREW	-	M09001230	1
3	TENSOR CABLE GAS / CABLE TENSION TUBE	-	M09001032	1
4	TORNILLO TAPA CARBURADOR / SCREW COVER CARBURETOR	-	M09001025	2
5	TAPA CARBURADOR / COVER CARBURETOR	-	M09001156	1
6	AGUJA D36 3° PUNTO / NEEDLE D36	-	M09003136	1
7	MUELLE COMPUERTA / SPRING SLIDE	-	M09001015	1
8	PLANCHA SUJECIÓN CABLE GAS / CABLE RETAINER PLATE	-	M09001010	1
9	COMPUERTA / VALVE SLIDE	M09002050	M09002060	1
10	TÓRICA TAPA CARBURADOR / O	-	M09001050	1
11	TORNILLO SUJ. STARTER / CHOKE SCREW	-	M09001110	1
12	MANDO STARTER / CHOKE LEVER ASSY.	-	M09001105	1
13	TÓRICAS STARTER / CHOKE O'RING	-	M09001065	1
14	KIT CARBURACIÓN / CARBURETOR KIT	MT120690100	MT280690100	1
15	TORNILLO REG. ENTRADA AIRE / REG. ENTRANCE SCREW	-	M09001115	1
16	MUELLE TORNILLO REG. AIRE / SPRING SCREW REG. AIR	-	M09001120	1
17	ARANDELA TORN. REG. AIRE / WASHER SCREW BOLT REG. AIR	-	M09001125	1
18	TÓRICA TORNILLO REG. AIRE / O'RING SCREW BOLT REG. AIR	-	M09001075	1
19	TORNILLO REG. COMPUERTA / SCREW BOLT REG. SLIDE	-	M09001035	1
20	MUELLE TORNILLO REG. COMPUERTA / SPRING SCREW SLIDE	-	M09001040	1
21	ARANDELA TORNILLO REG. COMP. / WASHER SCREW REG. SLIDE	-	M09001045	1
22	TÓRICA TORNILLO REG. COMP. / O'RING SCREW REG. SLIDE VALVE	-	M09001060	1
23	JUNTA PIPETA GASOLINA / FUEL FILTER DISC	-	M09001095	1
24	PIPETA ENTRADA GASOLINA / FUEL ENTRY TUBE	-	M09001135	1
25	JUNTA TORNILLO PIPETA / GASKET SCREW BOLT	-	M09001100	1
26	TORNILLO PIPETA / BOLT	-	M09001140	1
27	EMULSOR / NEEDLE JET	M09005268	M09005271	1
28	CHICLE RALENTÍ 30 / JET SLOW 30	M09004036	M09004035	1
29	VÁLVULA FLOTADOR / FLOAT VALVE	-	M09001200	1
30	CHICLE STARTER 60 / JET CHOKE 60	-	M09007060	1
31	TÓRICA CHICLE STARTER / O'RING JET CHOKE	-	M09001070	1
32	EJE FLOTADOR / FLOAT SHAFT	-	M09001145	1
33	FLOTADOR 2X2 / FLOAT 2X2	-	M09008036	2

GAS GAS

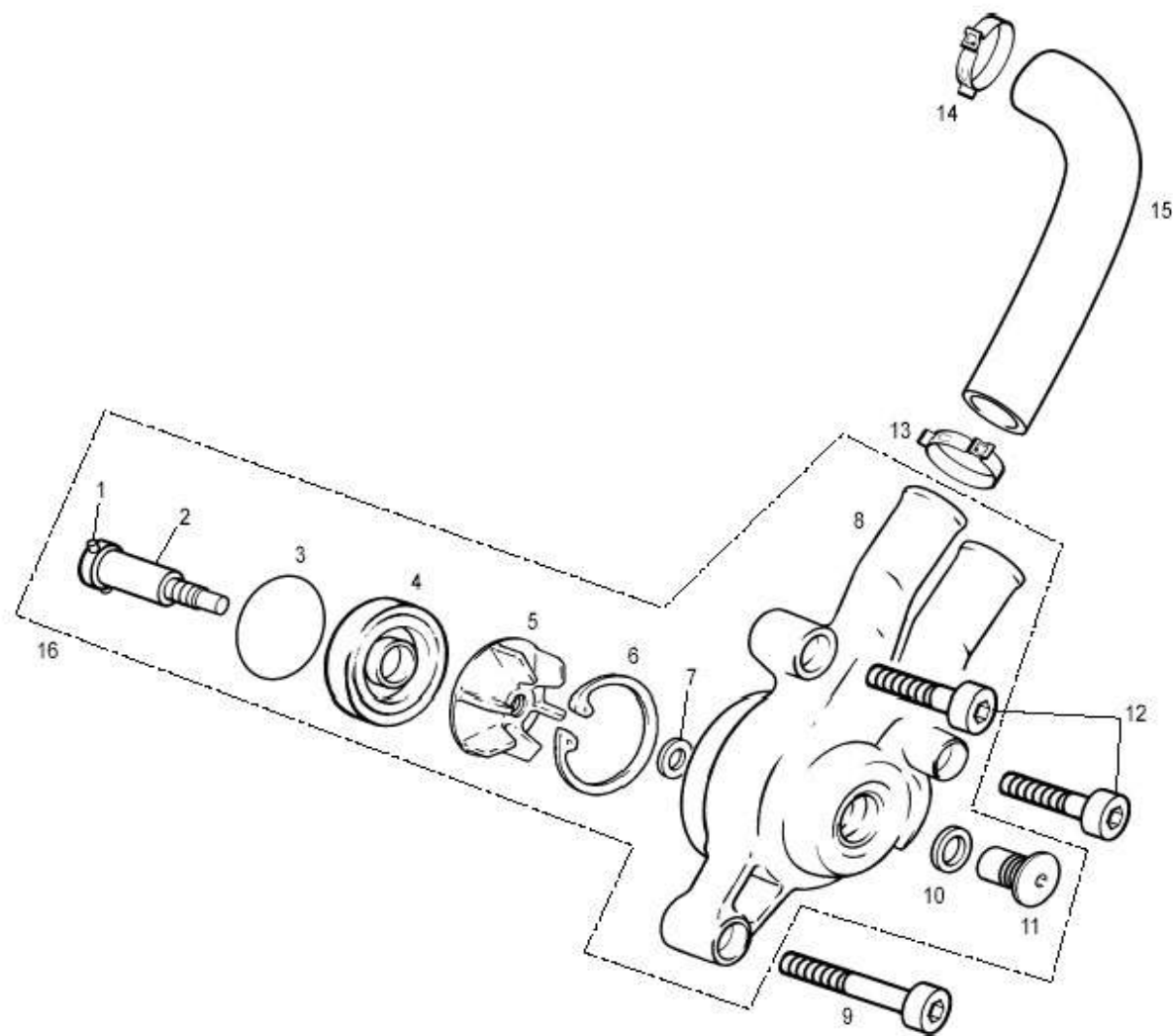
Motor 11



[illegible]

GAS GAS

Motor 11



[illegible]

GAS GAS

Motor 12

**DESPIECE
PART LIST**

**TXT PRO
2008**

125/200/250/280/300

GAS GAS

RECOMIENDA EL USO DE ACEITE:



Los componentes aquí expuestos y referenciados se basan en los datos existentes en la fecha de impresión de este manual. GAS GAS Motos, S.A. se reserva el derecho de efectuar cambios y/o modificaciones sin previo aviso.

GAS GAS MOTOS, S.A.

C/ UNICEF nº 17 · Polígon-Industrial Torremirona · 17190 Salt (Girona) SPAIN · Tel: +34 902 47 62 54 Fax: +34 902 47 61 60
E-mail: officegg@gasgasmotos.es / partsgg@gasgasmotos.es Web: www.gasgasmotos.es