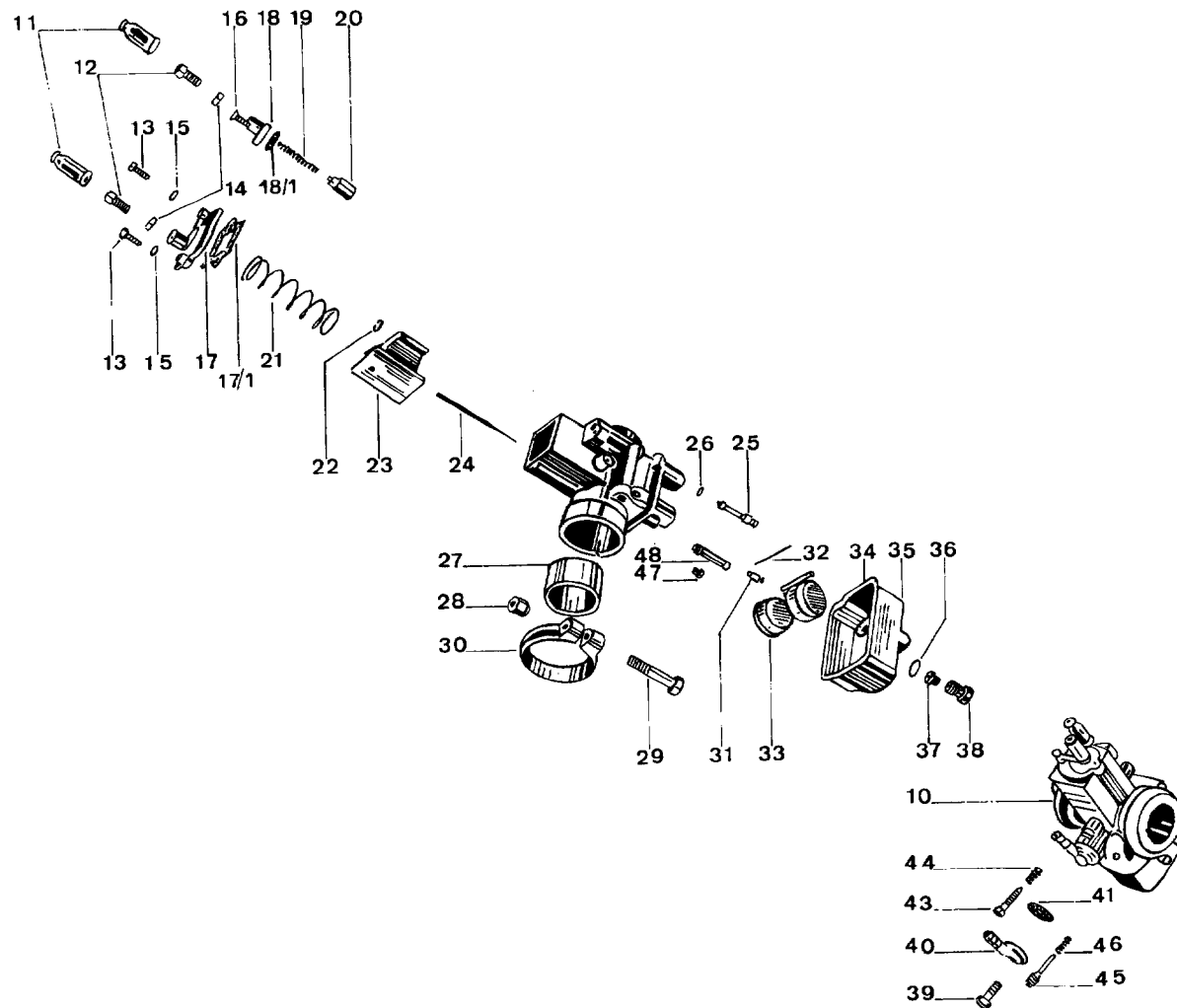
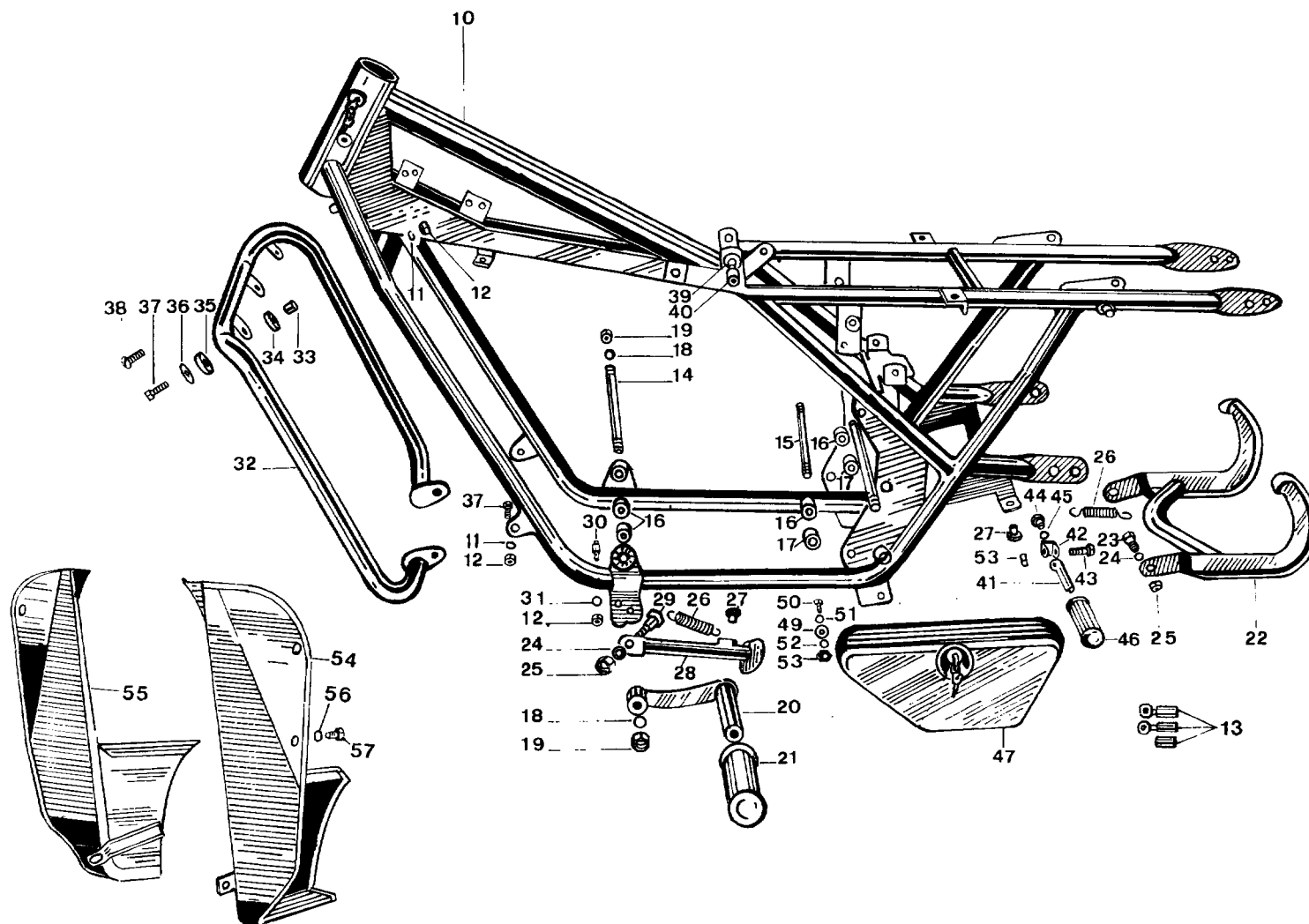
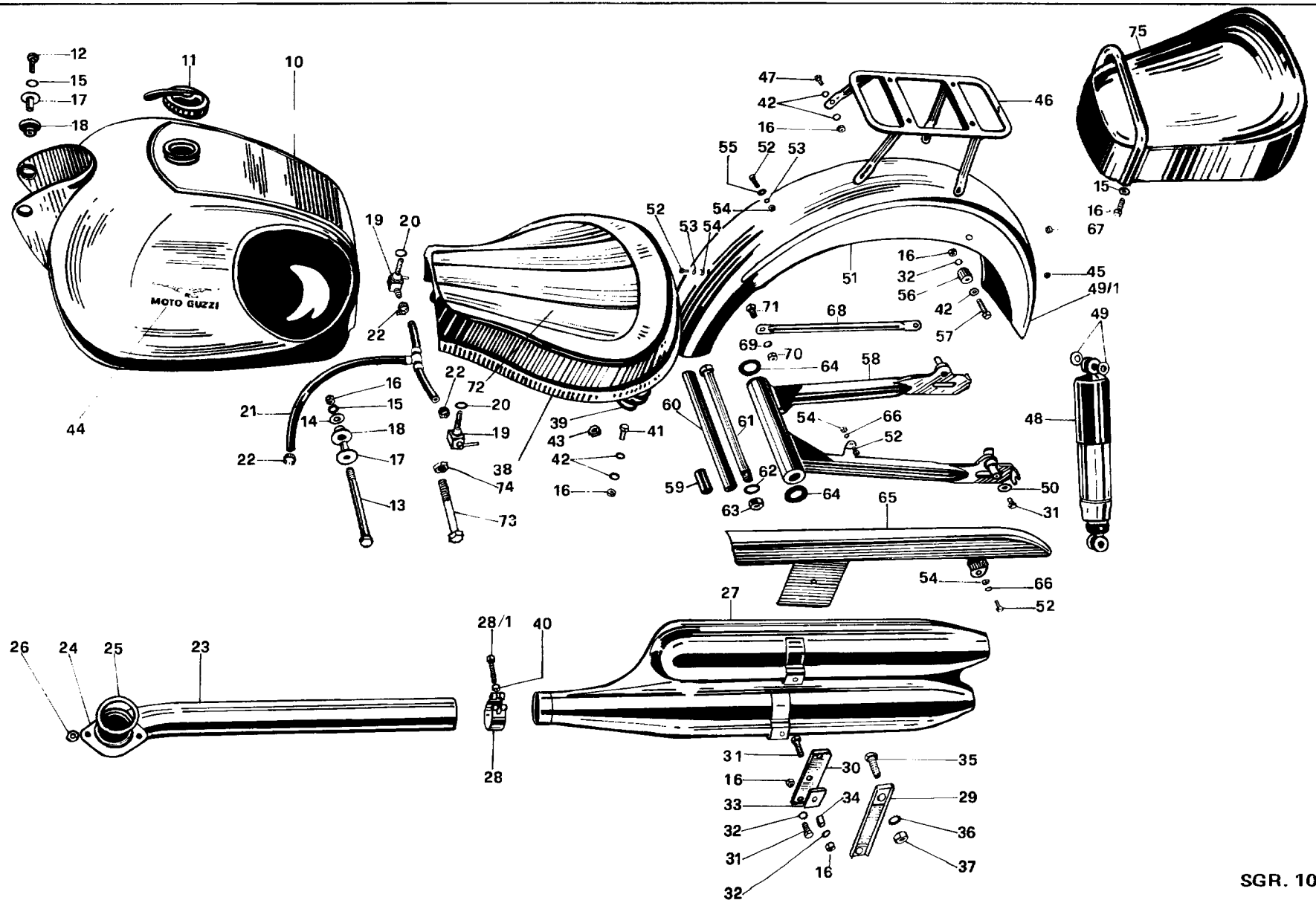


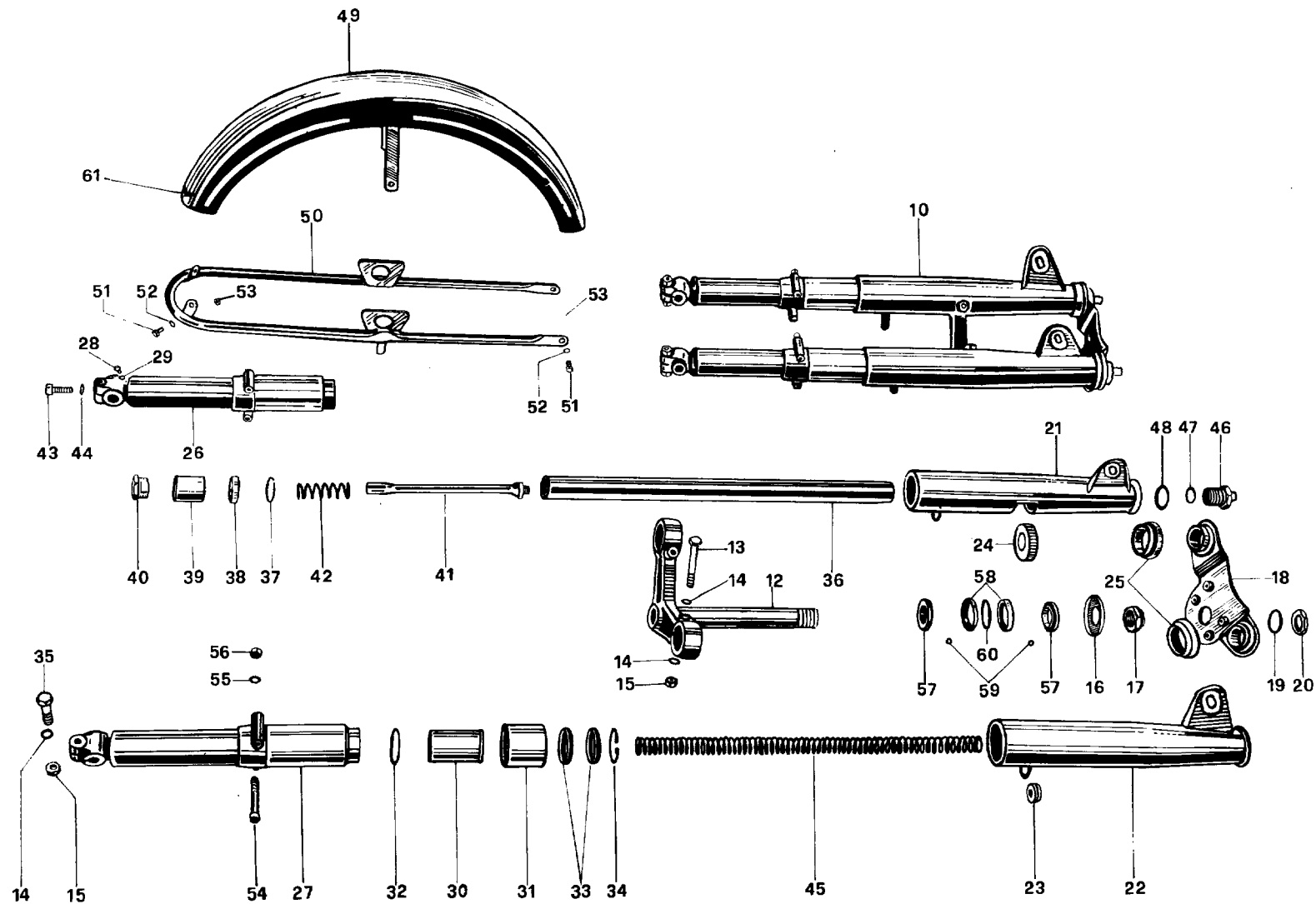
SGR. 8

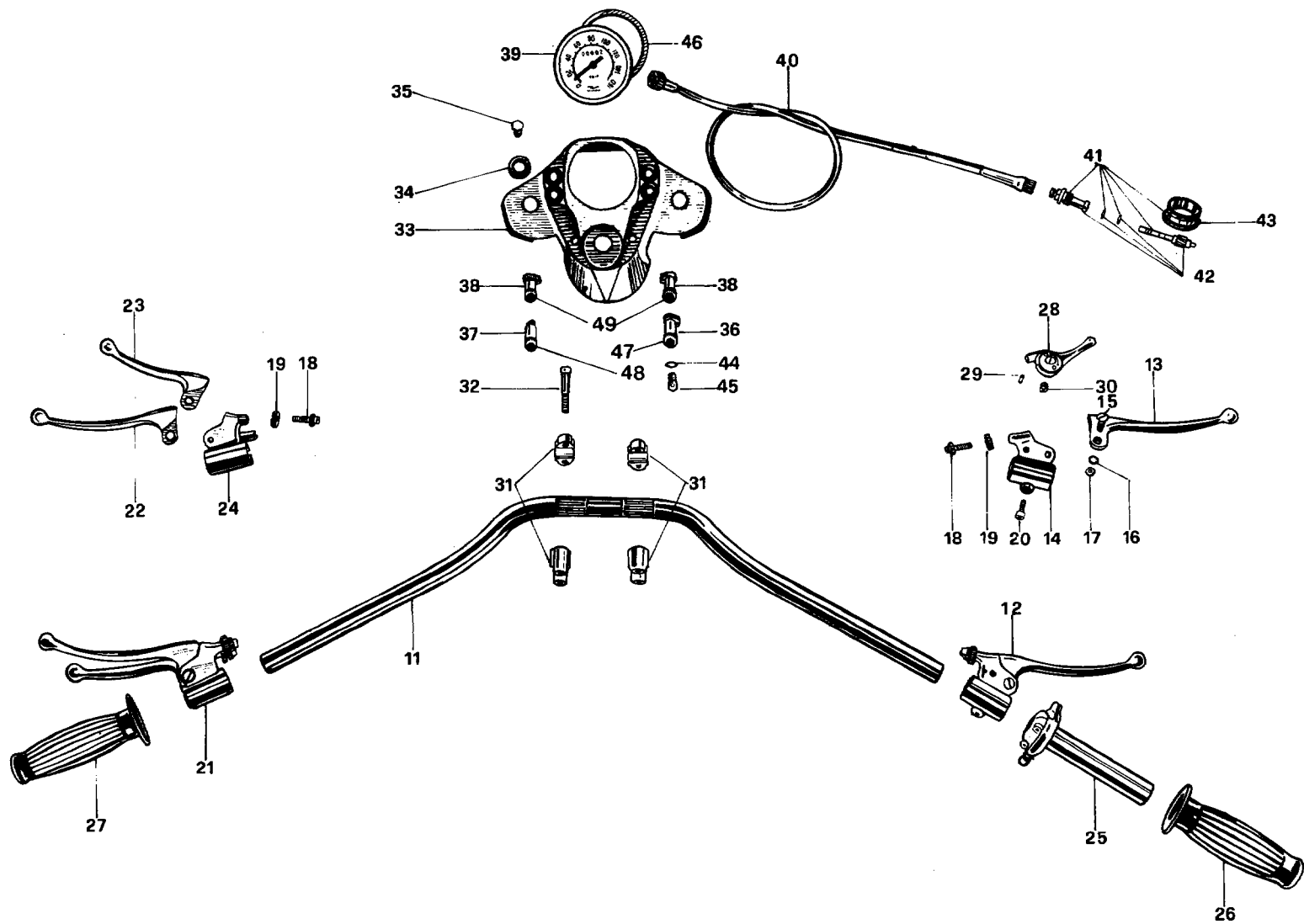
SGR. 7

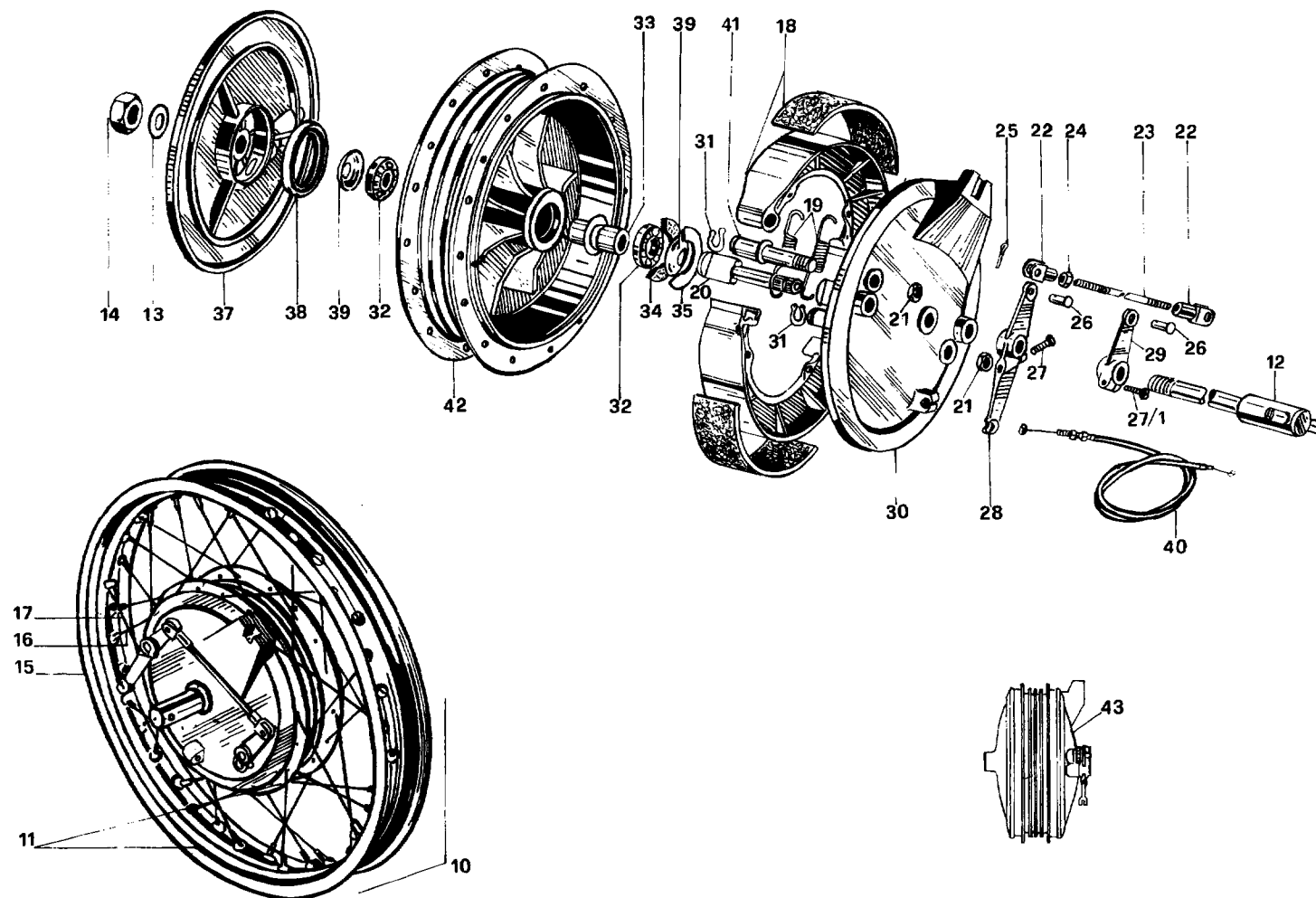


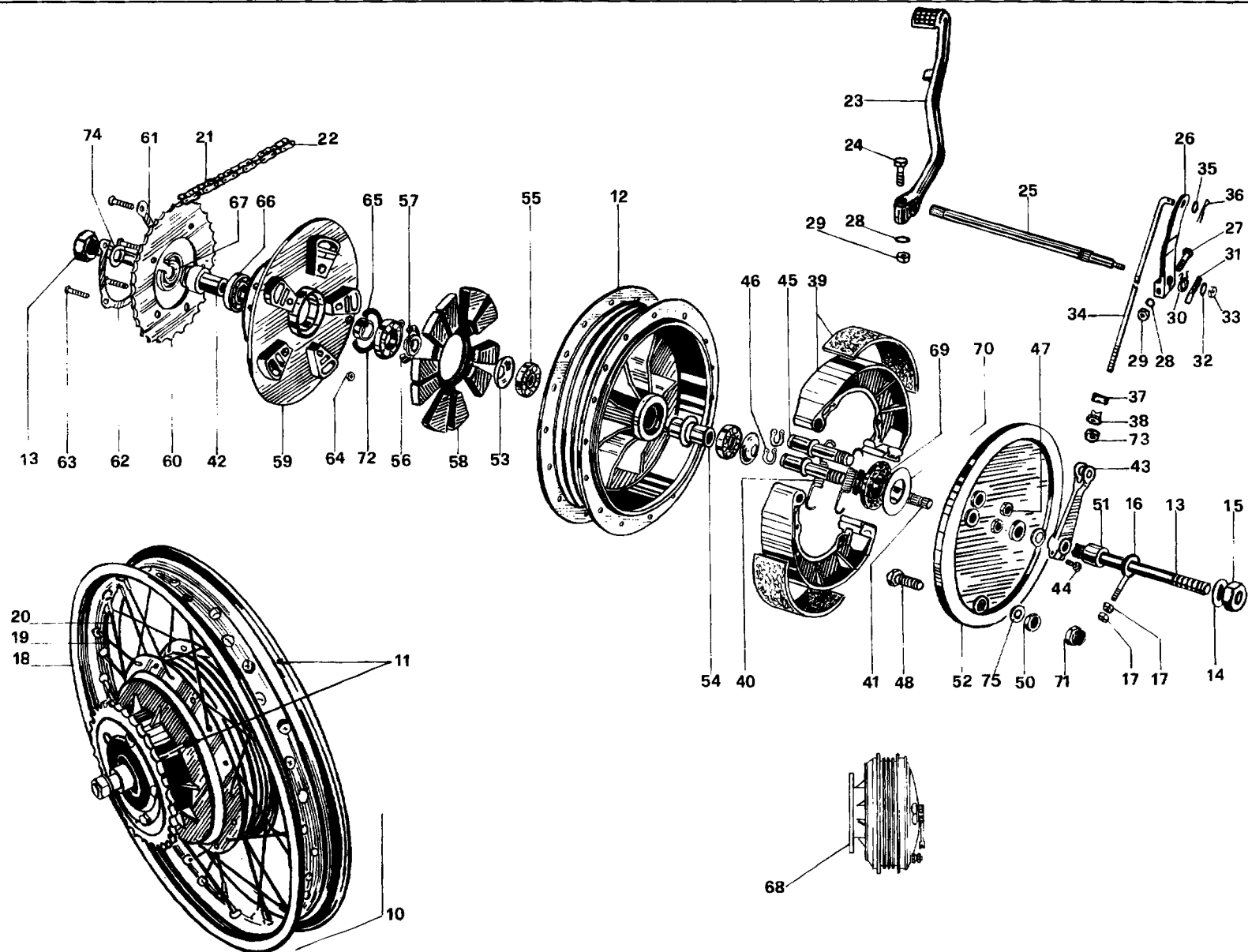


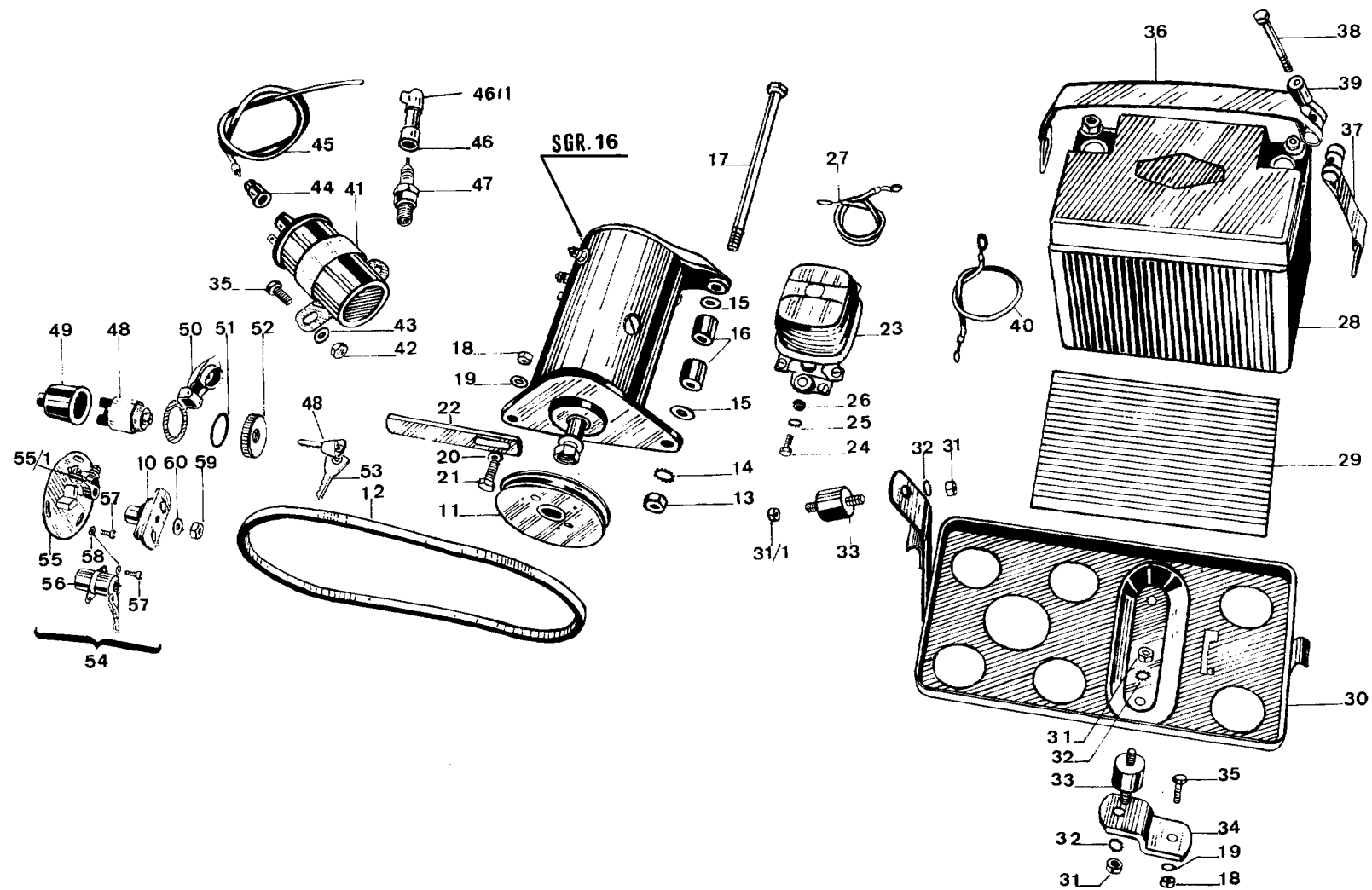


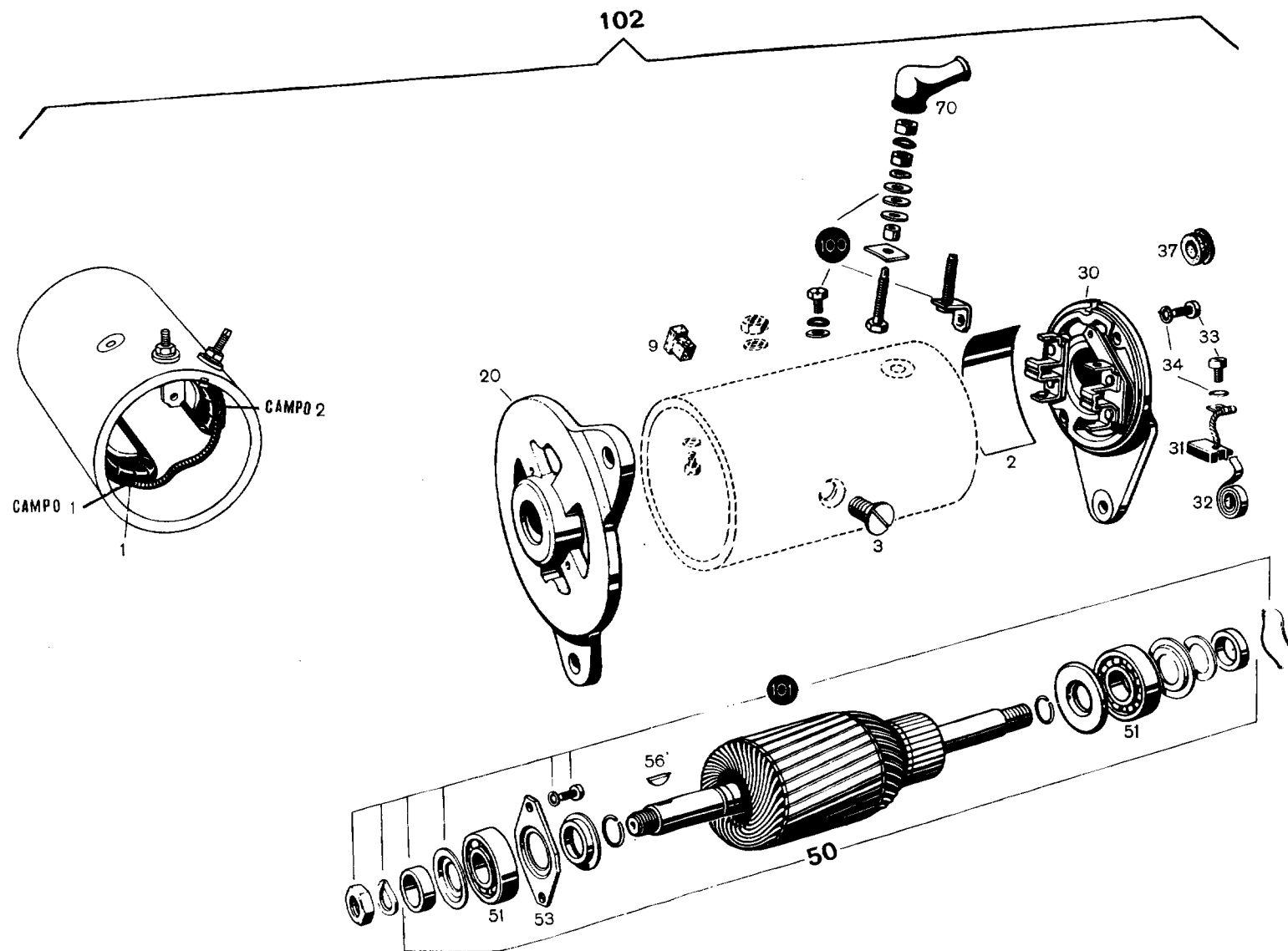


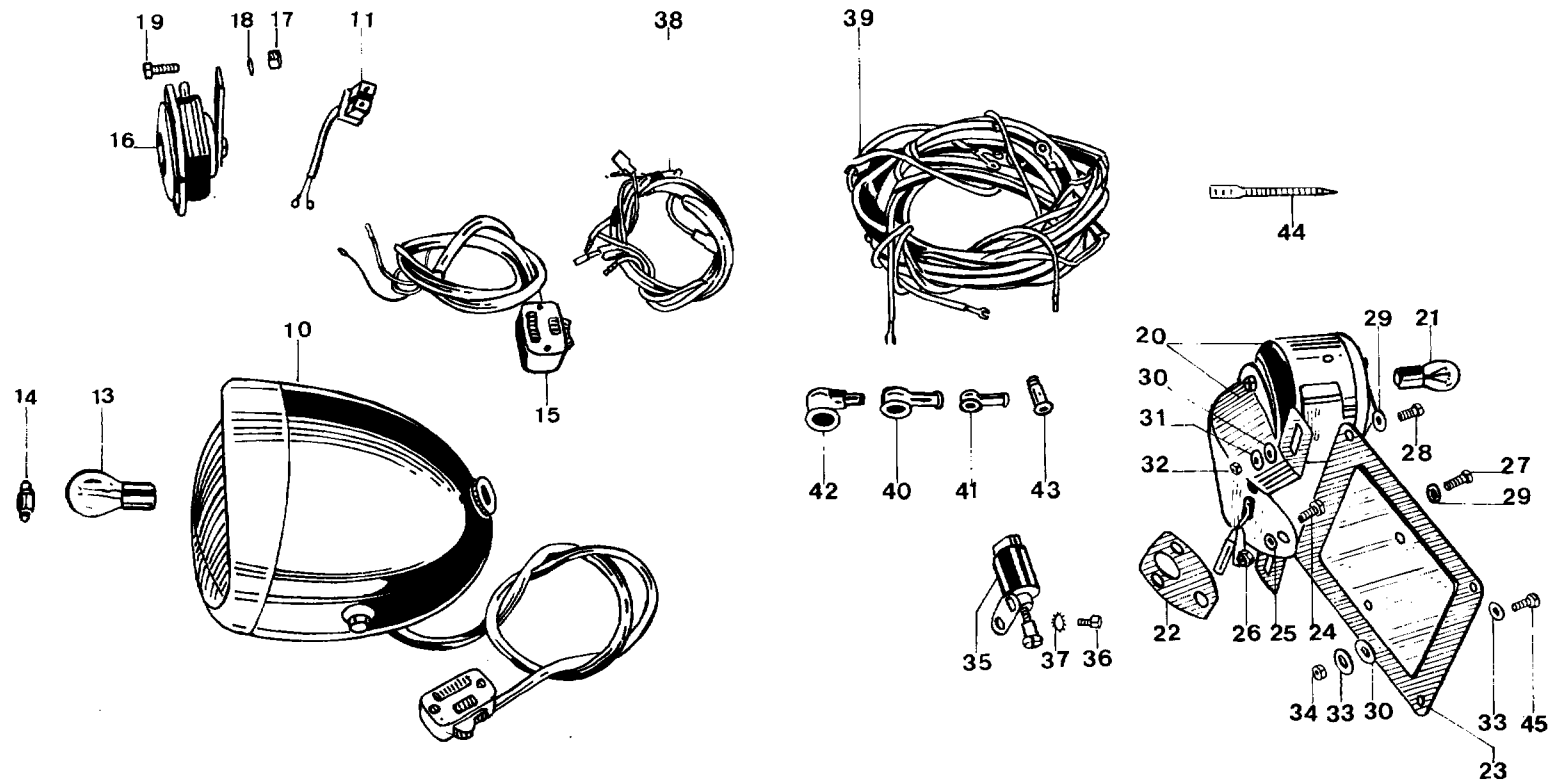


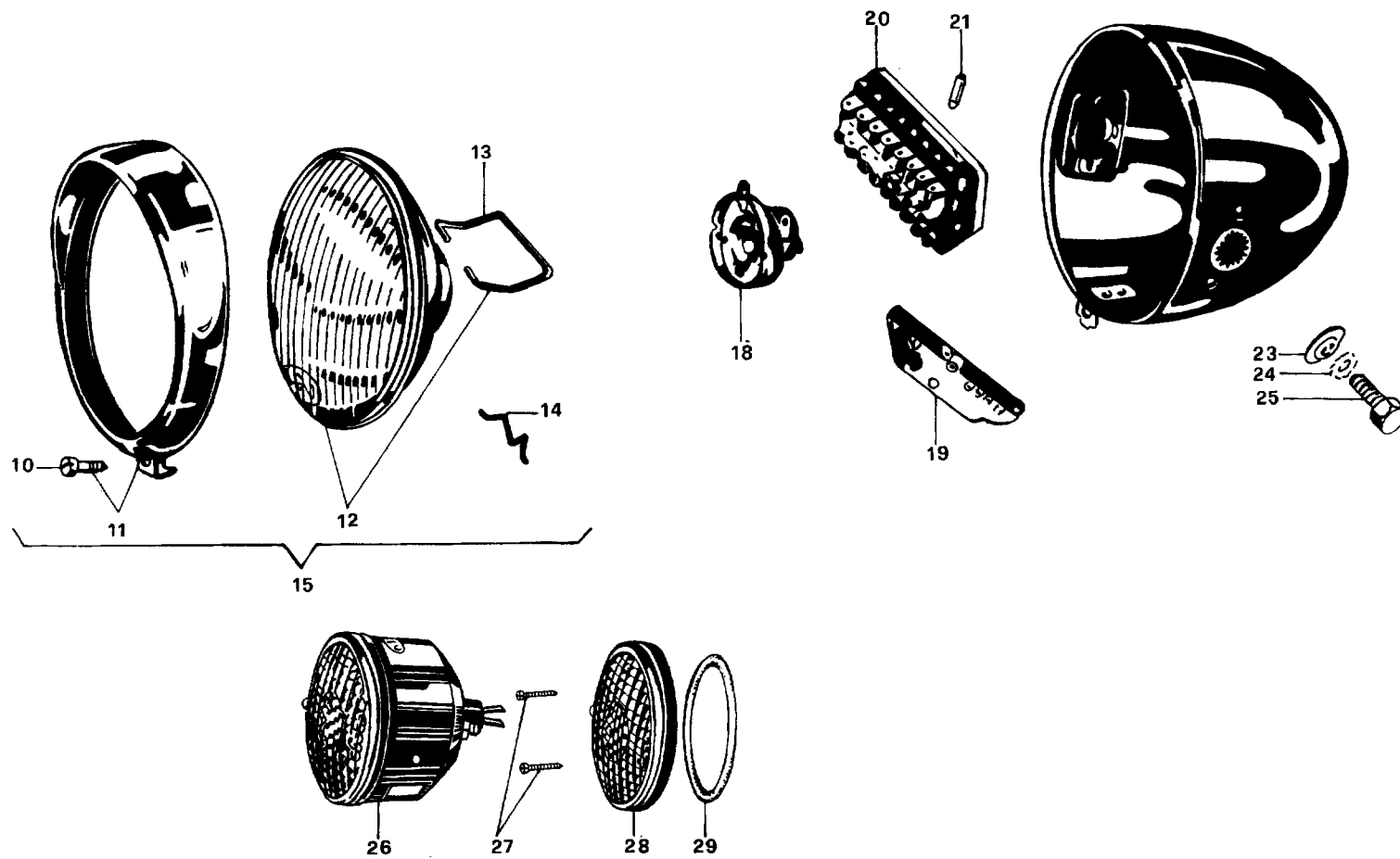






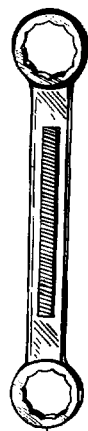




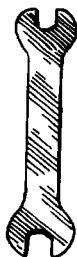




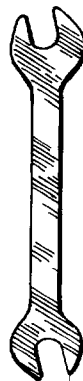
10



11



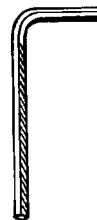
12



13



14



15

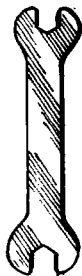


16



26

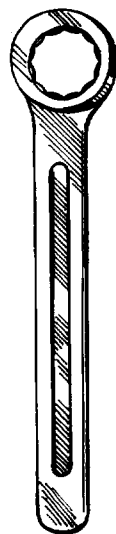
25



17



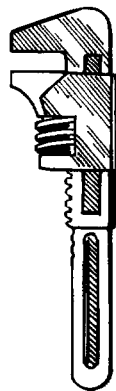
18



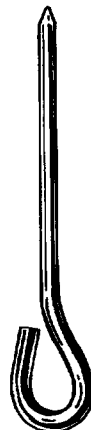
19



20



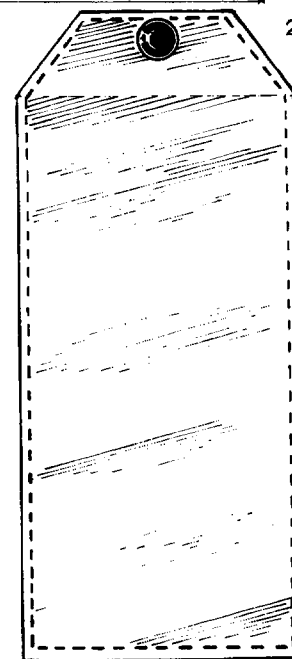
21



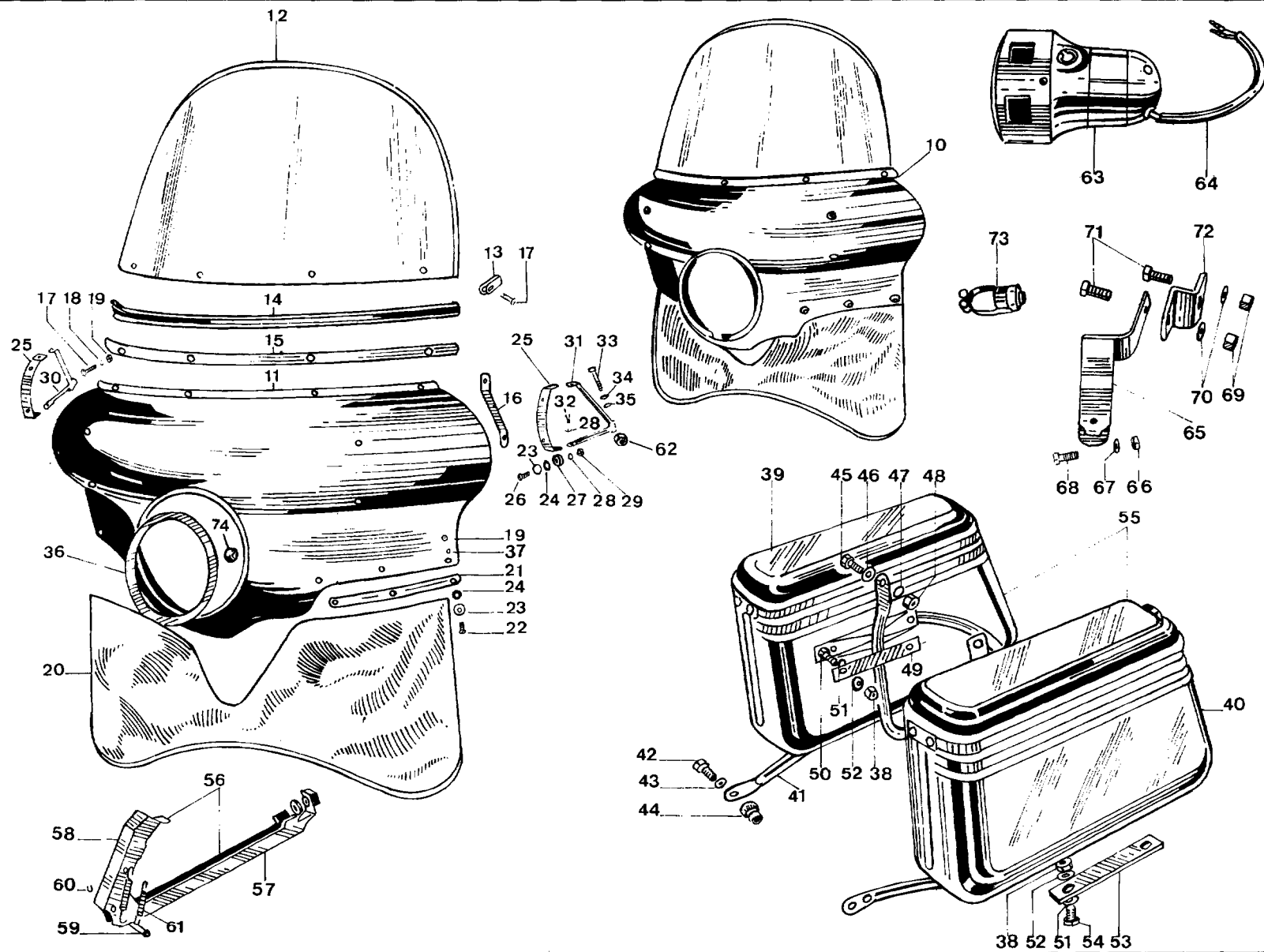
22





23



24



		PARTICOLARI OCCORRENTI PER APPLICAZIONE AVVIAMENTO ELETTRICO SUI MOTOCICLI CON AVVIAMENTO A PEDALE			NUOVO  500	
N. POS.	N. CODICE		DENOMINAZIONE	QUANT.		
	26 70 80 01		Dinamotore	1		
	10 70 14 55		Puleggia per dinamo	1		
	10 70 10 55		Bullone fissaggio dinamo	1		
	10 70 25 55		Cinghia per dinamo	1		
	26 70 38 00		Regolatore per dinamotore	1		
	93 11 00 60		Spessore elastico per regolatore	2		
	10 70 41 10		Piastrina destra sostegno regolatore	1		
	10 70 42 10		Piastrina sinistra sostegno regolatore	1		
	98 05 43 20		Vite fissaggio regolatore	4		
	95 02 11 06		Rosetta per viti fissaggio regolatore	4		
	92 60 22 06		Dado per viti fissaggio regolatore	4		
	26 73 50 01		Pulsante avviamento motore	1		
	12 73 49 00		Piastrina porta pulsante	1		
	12 73 51 00		Cappuccio protezione pulsante	1		
	95 10 01 30		Rosetta fissaggio piastrina alla leva comando freno anteriore	1		
	92 60 22 06		Dado fissaggio piastrina alla leva comando freno anteriore	1		
	98 62 03 30		Vite fissaggio leva comando freno anteriore e piastrina porta pulsante	1		
	10 74 75 10		Gruppo cavi aggiunti	1		
	10 74 79 55		Cavo massa batteria	1		
	10 74 80 10		Cavo da regolatore B+ 30 a B+	1		
	10 74 78 10		Cavo da regolatore 30h a dinamo 30h	1		
	25 70 71 00		Pipa protezione terminali	4		