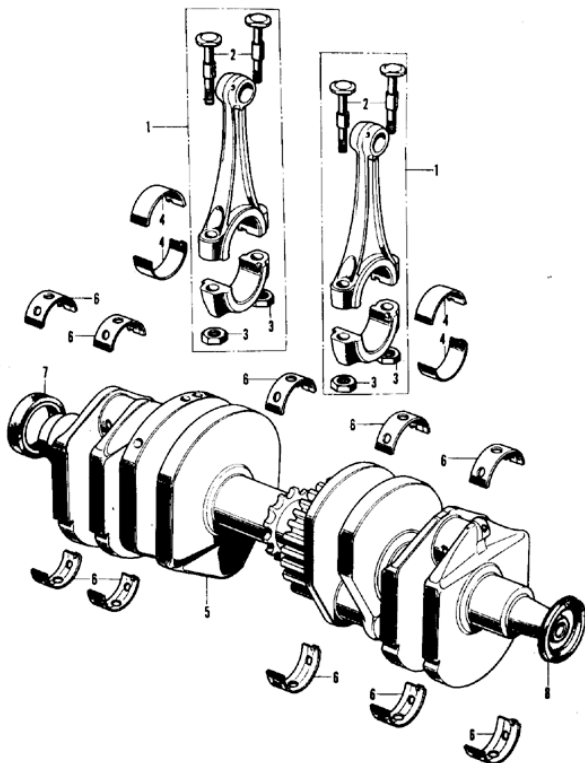


E-14 Crankshaft



E-14 Crankshaft

Ref. No.	Part No.	Description	Reqd. No. (B50)	Remarks
1	13201-323-000	ROD COMP. A, connecting	(4)	
	13202-323-000	ROD COMP. B, connecting	(4)	
	13203-323-000	ROD COMP. C, connecting	(4)	
	13204-323-000	ROD COMP. D, connecting	(4)	
	13205-323-000	ROD COMP. E, connecting	(4)	
	13206-323-000	ROD COMP. F, connecting	(4)	
	13207-323-000	ROD COMP. G, connecting	(4)	
2	13213-323-300	BOLT, connecting rod	8	
3	13214-300-000	NUT, connecting rod	8	
4	13215-323-003	BEARING A, connecting rod (DAIDO)	(8)	
	13216-323-003	BEARING B, connecting rod (DAIDO)	(8)	
	13217-323-003	BEARING C, connecting rod (DAIDO)	(8)	
	13218-323-003	BEARING D, connecting rod (DAIDO)	(8)	

Selection table of connecting rod big end bearing

Crank pin allowance		1	35 ϕ $\begin{smallmatrix} +0 \\ -0.010 \end{smallmatrix}$	2	35 ϕ $\begin{smallmatrix} -0.010 \\ -0.020 \end{smallmatrix}$
Connecting rod allowance		Bearing mark color	Clearance (μ)	Bearing mark color	Clearance (μ)
3	38 ϕ $\begin{smallmatrix} +0.021 \\ +0.014 \end{smallmatrix}$	B (BROWN)	18~43	A (BLACK)	20~45
2	38 ϕ $\begin{smallmatrix} +0.014 \\ +0.007 \end{smallmatrix}$	C (GREEN)	19~44	B (BROWN)	21~46
1	38 ϕ $\begin{smallmatrix} +0.007 \\ -0 \end{smallmatrix}$	D (YELLOW)	20~45	C (GREEN)	22~47

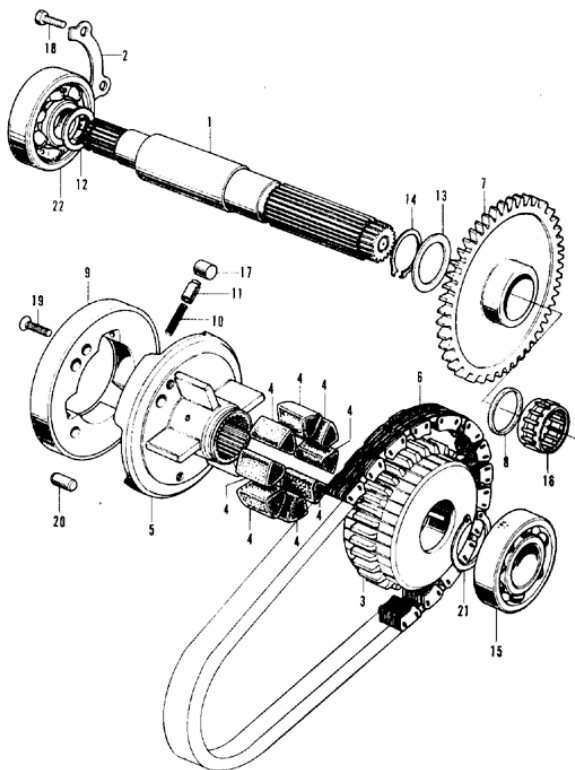
5	13300-323-000	CRANKSHAFT COMP.	1	
6	13315-323-000	BEARING A, crankshaft	(10)	
	13316-323-000	BEARING B, crankshaft	(10)	
	13317-323-000	BEARING C, crankshaft	(10)	
	13318-323-000	BEARING D, crankshaft	(10)	

Selection table of crankshaft journal main bearing

Crankshaft journal allowance		1	33 ϕ $\begin{smallmatrix} +0 \\ -0.010 \end{smallmatrix}$	2	33 ϕ $\begin{smallmatrix} -0.010 \\ -0.020 \end{smallmatrix}$
Crankcase allowance		Bearing mark color	Clearance (μ)	Bearing mark color	Clearance (μ)
C	36 ϕ $\begin{smallmatrix} +0.024 \\ +0.016 \end{smallmatrix}$	B (BROWN)	20~46	A (BLACK)	22~48
B	36 ϕ $\begin{smallmatrix} +0.016 \\ +0.008 \end{smallmatrix}$	C (GREEN)	20~46	B (BROWN)	22~48
A	36 ϕ $\begin{smallmatrix} +0.008 \\ +0 \end{smallmatrix}$	D (YELLOW)	20~46	C (GREEN)	22~48

7	91201-300-003	OIL-SEAL, 30 \times 42 \times 8	1	
8	91201-323-005	OIL-SEAL, 30 \times 45 \times 8	1	

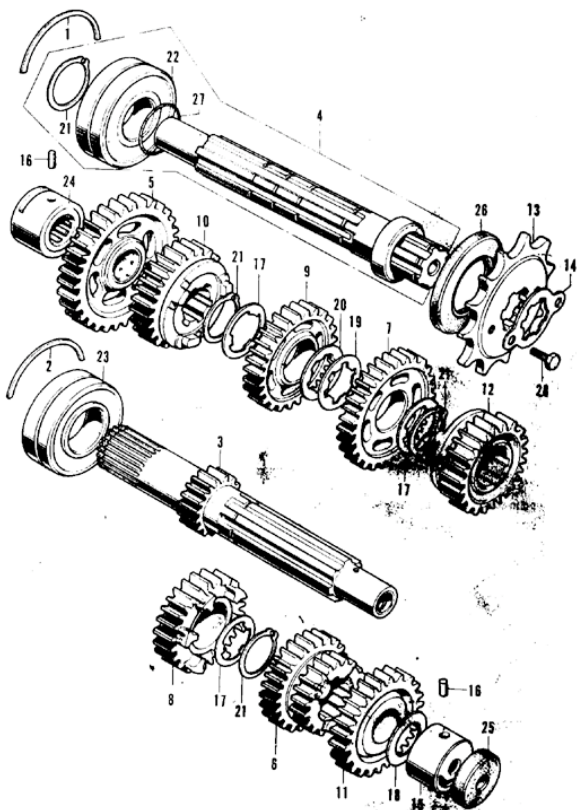
E-15 Primary Shaft



E-15 Primary Shaft

Ref. No.	Part No.	Description	Reqd. No. CB500	Remarks
1	23100-323-000	PRIMARY SHAFT COMP.	1	
2	24102-323-000	PLATE, bearing set	1	
3	23111-323-010	SPROCKET, primary driven	1	
4	23114-323-000	RUBBER, primary	8	
5	23121-323-010	HUB, primary drive sprocket	1	
6	23131-323-000	CHAIN, primary drive (50L Endless)	1	
7	28111-323-000	GEAR, starting clutch	1	
8	28112-323-000	SPACER, 25 mm	1	
9	28120-323-000	OUTER, starting clutch	1	
10	28125-323-000	SPRING, starting clutch roller	3	
11	28126-323-000	CAP, starting roller spring	3	
12	90456-323-000	WASHER, thrust, 22 mm	1	
13	90555-700-000	WASHER, thrust, 25 mm	1	
14	90602-259-010	CIR-CLIP, 25 mm	1	
15	91005-323-004	BEARING, ball, 63/22 (KOYO)	1	
16	91007-323-009	BEARING, 25×29×17	1	
17	91103-259-000	ROLLER, 10.2×11.5	3	
18	92000-06016	BOLT, hex, 6×16	2	
19	93600-06018	SCREW, flat, 6×18	3	
20	94303-08140	PIN, dowel, 8×14	1	
21	94510-30000	CIR-CLIP, external, 30 mm	1	
22	96100-63060	BEARING, radial ball, 6205	1	

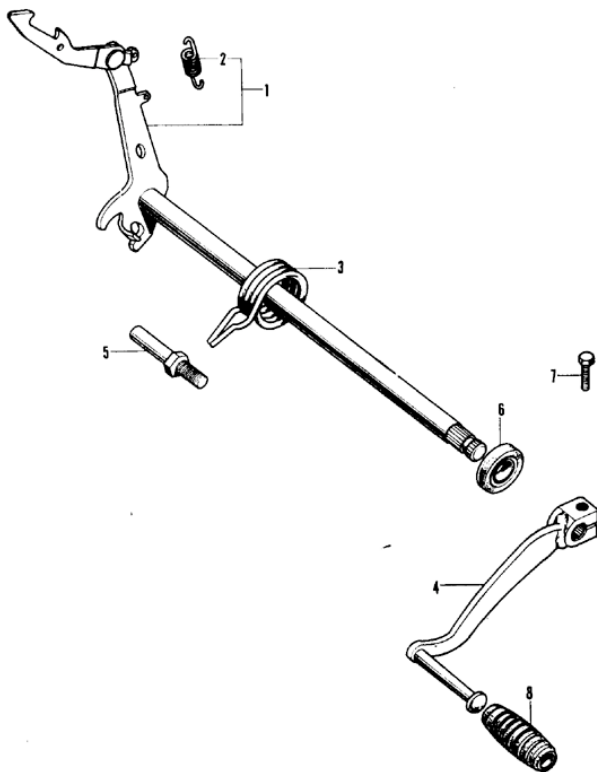
E-16 Transmission



E-16 Transmission

Ref. No.	Part No.	Description	Reqd. No. CB500	Remarks
1	13491-283-000	RING, bearing set, 57 mm	1	
2	13492-283-000	RING, bearing set, 52 mm	1	
3	23210-323-000	MAINSHAFT COMP., transmission	1	
4	23220-323-000	COUNTERSHAFT COMP., transmission	1	
5	23430-323-000	GEAR, low, countershaft (40T)	1	
6	23431-323-000	GEAR, second & third main shaft (32T, 36T)	1	
7	23441-286-030	GEAR, second, countershaft (36T)	1	
8	23451-323-000	GEAR, fourth, mainshaft (28T)	1	
9	23461-286-030	GEAR, third, countershaft (36T)	1	
10	23471-286-010	GEAR, fourth, countershaft (29T)	1	
11	23481-323-000	GEAR, top, mainshaft (30T)	1	
12	23491-286-030	GEAR, top, countershaft (27T)	1	
13	23801-300-010	SPROCKET, drive (17T)	1	
14	23811-292-000	PLATE, drive sprocket fixing	1	
15	23931-323-004	BEARING, needle, 22 mm	1	
16	24261-283-000	PIN, gearshift fork guide	2	
17	90451-286-000	WASHER A, thrust, 25 mm	3	
18	90458-292-000	WASHER, thrust, 20 mm	2	
19	90461-286-000	WASHER B, thrust, 25 mm	1	
20	90462-323-000	WASHER, lock, 25 mm	1	
21	90602-259-010	CIR-CLIP, 25 mm	4	
22	91001-283-003	BEARING, special ball, 5305 (NACHI)	1	
23	91002-286-008	BEARING, HS ball, 5306 (TOYO)	1	
24	91022-286-016	BEARING, needle, 20 mm	1	
25	91203-302-003	OIL-SEAL, 8×34×8 (ARAI)	1	
	91203-292-005	OIL-SEAL, 8×34×8 (N.O.K.)	1	
26	91206-283-010	OIL-SEAL, 33×57×7 (ARAI)	1	
27	91306-703-000	O-RING, 24.5 φ	1	
28	92000-06012	BOLT, hex., 6×12	2	

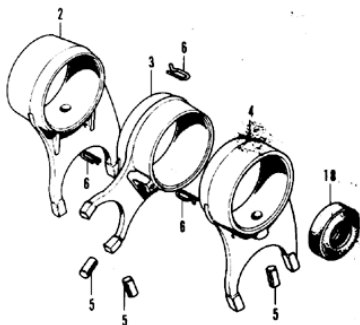
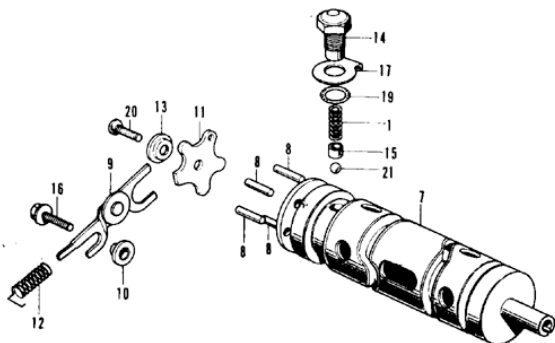
E-17 Gear Shift Spindle



E-17 Gear Shift Spindle

Ref. No.	Part No.	Description	Reql. No. CB500	Remarks
1	24610-323-000	SPINDLE, gear shift	1	
2	24641-216-000	SPRING, gear shift arm	1	
3	24651-286-000	SPRING, gear shift return	1	
4	24700-323-010	PEDAL, gear change	1	
5	90015-286-000	PIN, return spring	1	
6	91202-216-000	OIL-SEAL, 14×24×5	1	
7	92000-06020	BOLT, hex., 6×20	1	
8	95011-40000	RUBBER, change pedal	1	

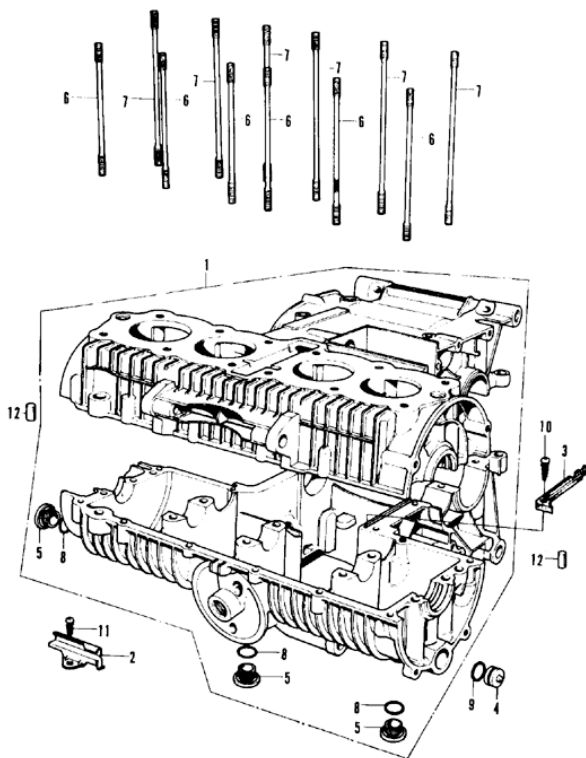
E-18 Gear Shift Fork - Drum



E-18 Gear Shift Fork - Drum

Ref. No.	Part No.	Description	Reqd. No. CB500	Remarks
1	22421-040-000	SPRING, clutch damper	1	
2	24211-323-000	FORK, right gear shift	2	
3	24212-286-000	FORK B, gear shift	1	
4	24213-323-000	FORK, left gear shift	1	
5	24261-283-000	PIN, gear shift fork guide	3	
6	24263-286-000	CLIP, guide pin	3	
7	24301-286-050	DRUM, gear shift	1	
8	24421-230-000	PIN, gear shift drum	4	
9	24480-323-000	STOPPER, shift drum	1	
10	24433-323-000	COLLAR, shift drum stopper	1	
11	24434-286-020	PLATE, drum stopper cam	1	
12	24435-323-000	SPRING, shift drum stopper	1	
13	24438-323-000	COLLAR, shift drum stopper	1	
14	24445-286-020	SCREW, shift drum guide	1	
15	24448-323-000	CAP, neutral stopper spring	1	
16	90085-323-000	BOLT, special, 6 mm	1	
17	90434-286-000	WASHER, lock, 12 mm	1	
18	91201-292-003	OIL-SEAL, 12×25×2.5	1	
19	91304-216-000	O-RING, 11.5×2	1	
20	93600-00020	SCREW, flat, 6×20	1	
21	96211-10000	BALL, steel, #10 (3/16")	1	

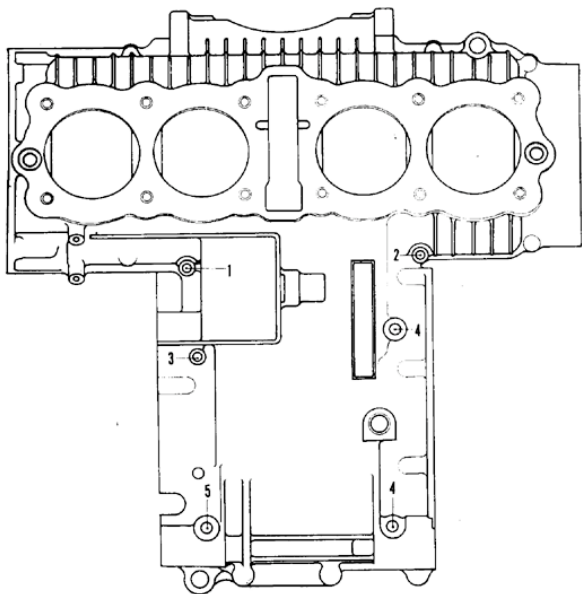
E-19 Crankcase



E-19 Crankcase

Ref. No.	Part No.	Description	Reqd. No. CB500	Remarks
1	11000-323-000	CRANKCASE ASSY.	1	
2	11202-323-000	OIL GUIDE A	1	
3	11203-323-000	OIL GUIDE B	1	~1000mm
	11203-323-010	OIL GUIDE B	1	USE 1000mm ~
4	11207-323-000	PLUG, oil pass	1	
5	15331-300-000	CAP, oil pass	3	
6	90033-323-000	BOLT A, cylinder stud.....	6	
7	90034-323-000	BOLT B, cylinder stud.....	6	
8	91315-044-000	O-RING, 19.4×2.8.....	3	
9	91319-300-000	O-RING, 13×2.5.....	1	
10	90901-25310	SCREW, tapping, 5×16	1	
11	90901-26110	SCREW, tapping, 6×12	1	
12	94302-40160	PIN, dowel, 10×16.....	2	

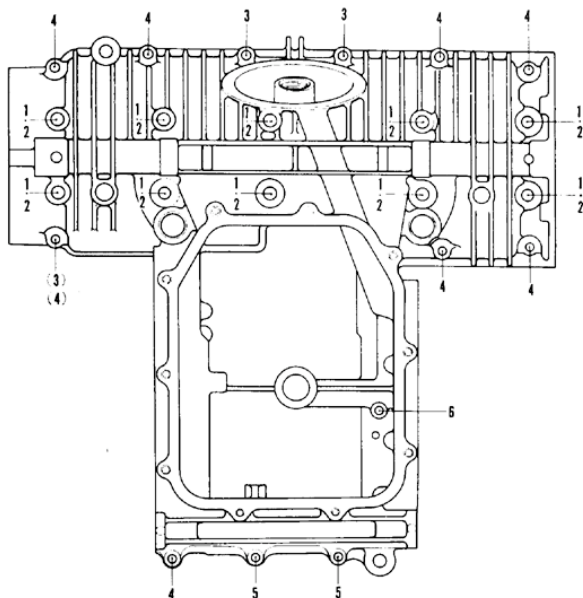
E-20 Upper Case (Bolt & Washer)



E-20 Upper Case (Bolt & Washer)

Ref. No.	Part No.	Description	Reqd. No. (x1500)	Remarks
1	95700 09032	BOLT, flange, 6x32	1	
2	95700 09050	BOLT, flange, 6x50	1	
3	95700 09100	BOLT, flange, 6x100	1	
4	95700 08100	BOLT, flange, 8x100	2	
5	95700 08125	BOLT, flange, 8x125	1	~ 100153
	90011 323 000	BOLT, flange, 8x145	1	CS000E-100154 ~

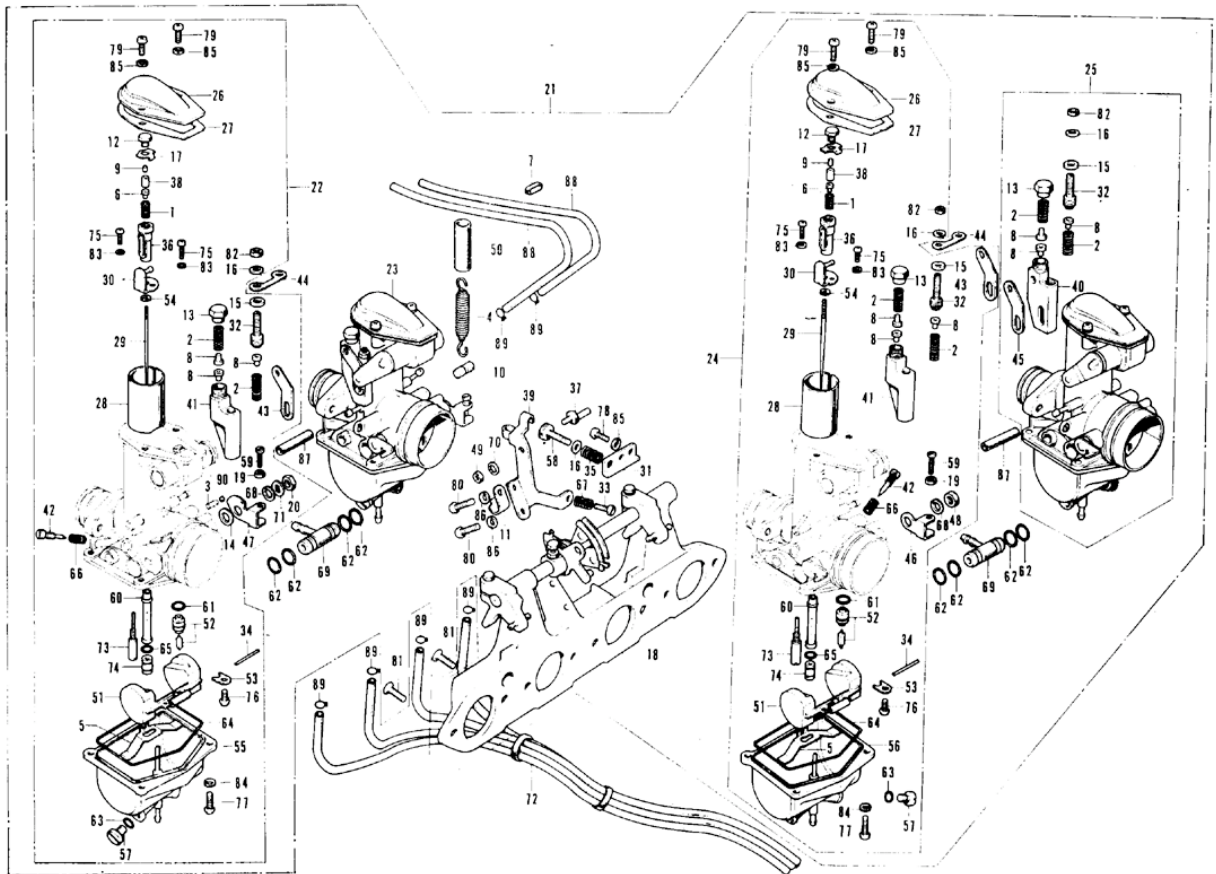
E-21 Lower Case (Bolt & Washer)



E-21 Lower Case (Bolt & Washer)

Ref. No.	Part No.	Description	Reqd. No. CB500	F.R.T.	Remarks
1	90084-023-000	BOLT, hex, 8x100	10		
2	90485-035-000	WASHER, 14 mm	10		
3	95700-06032	BOLT, flange, 6x32	2 3		~1000153 C B 500 E-1000154 ~
4	95700-06040	BOLT, flange, 6x40	8 7		~1000153 C B 500 E-1000154 ~
5	95700-06055	BOLT, flange, 6x55	2		
6	95700-06105	BOLT, flange, 6x105	1		





E-22 Carburetor

Ref. No.	Part No.	Description	Reqd. No. (CH50)	Remarks
1	16050-323-004	SPRING A, coil	4	
2	16051-323-004	SPRING B, coil	8	
3	16052-323-004	SPRING C, coil	1	
4	16055-323-004	SPRING A, tension coil	1	
5	16061-323-004	SPRING, leaf	4	
6	16063-323-004	SEAT A, spring	4	
7	16064-300-004	BAND, carburetor breather pipe.....	1	
8	16064-323-004	SEAT B, spring	12	
9	16065-323-004	SEAT C, spring	4	
10	16066-323-004	PLATE, spring set	1	
11	16068-323-004	CLIP, tube	1	
12	16080-323-004	BOLT A, special	4	
13	16082-323-004	BOLT C, special	4	
14	16087-323-004	WASHER, special	1	
15	16088-323-004	WASHER D, special	4	
16	16089-323-004	WASHER, plain, 5 mm.....	5	
17	16090-323-004	WASHER, tongued	4	
18	16094-323-004	STAY PLATE COMP.....	1	
19	16096-323-004	NUT, special	3	
20	16097-323-004	NUT, hex.....	1	
21	16100-323-004	CARBURETOR ASSY.	1	
22	16101-323-004	CARBURETOR ASSY. A	1	
23	16102-323-004	CARBURETOR ASSY. B	1	
24	16103-323-004	CARBURETOR ASSY. C	1	
25	16104-323-004	CARBURETOR ASSY. D	1	
26	16107-323-004	TOP	4	
27	16110-323-004	WASHER, top	4	
28	16111-323-004	VALVE, throttle	4	
29	16113-323-004	NEEDLE, jet	4	
30	16115-323-004	PLATE, valve	4	

E-22 Carburetor

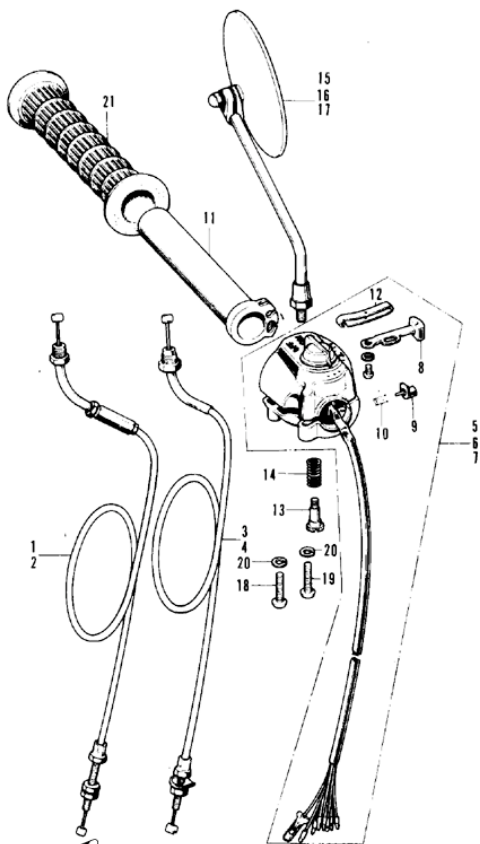
Ref. No.	Part No.	Description	Reqd. No. CB500	Remarks
31	16121-323-004	PLATE, stop screw	1	
32	16124-323-004	SCREW A, stop	4	
33	16125-300-004	SCREW, throttle stop	1	
34	16126-259-004	PIN, float arm	4	
35	16126-300-004	SPRING, throttle stop	1	
36	16126-323-004	SHAFT, throttle	4	
37	16127-300-004	PIN, screw stopper	1	
38	16127-323-004	HOLDER, throttle shaft	4	
39	16129-323-004	STAY, throttle cable	1	
40	16131-323-004	HOLDER A, adjust	2	
41	16132-323-004	HOLDER B, adjust	2	
42	16137-323-004	SCREW, adjust	4	
43	16138-323-004	PLATE A, dust	4	
44	16139-323-004	PLATE B, dust	2	
45	16140-323-004	PLATE C, dust	2	
46	16145-323-004	JOINT A, connector	2	
47	16146-323-004	JOINT B, connector	1	
48	16147-292-004	NUT, hex., 7 mm	2	
49	16147-548-004	NUT, hex., 6 mm	1	
50	16150-300-000	TUBE, protector	1	
51	16151-323-004	FLOAT	4	
52	16155-323-004	SEAT, valve	4	
53	16156-323-004	PLATE, clip	4	
54	16157-259-004	CLIP, bar	4	
55	16157-323-004	BODY A, float chamber	2	
56	16158-323-004	BODY B, float chamber	2	
57	16162-304-004	SCREW, drain	4	
58	16163-300-014	SCREW, throttle stop	1	
59	16163-551-004	SCREW, throttle stop	3	
60	16164-323-004	JET, needle	4	



E-22 Carburetor

Ref. No.	Part No.	Description	Repl. No. CB500	Remarks
61	16171-551-001	O RING, 5.7 x 1.3	4	
62	16173-044-004	O RING, 7.8 x 1.9	8	
63	16175-001-004	O RING, 4.5φ	4	
64	16176-286-004	O RING, 6.7 x 1.9	4	
65	16177-551-004	O RING, 4.7 x 1.1	4	
66	16181-292-004	SPRING, air screw	4	
67	16186-200-001	SPRING, stop screw	1	
68	16189-292-004	WASHER, spring, 7mm	3	
69	16191-200-001	JOINT, T rope fuel tube	2	
70	16193-248-001	WASHER, interior tooth	1	
71	16197-292-001	WASHER, lock, 7mm	1	
72	16290-024-000	TUBE ASSY, over flow	1	
73	29121-076-000	JET, slow, # 80	4	
74	29154-001-000	JET, main, # 100	4	
75	93500-00010-0A	SCREW, pan, 4 x 10	8	
76	93500-04010-0A	SCREW, pan, 4 x 10	4	
77	93500-04012-0A	SCREW, pan, 4 x 12	16	
78	93500-05012-0A	SCREW, pan, 5 x 12	2	
79	93500-05016-0A	SCREW, pan, 5 x 16	8	
80	93500-06012	SCREW, pan, 6 x 12	2	
81	93600-06016	SCREW, flat, 6 x 16	8	
82	94001-05000-0S	NUT, hex., 5 mm	4	
83	94111-03000	WASHER, spring, 3mm	8	
84	94111-04000	WASHER, spring, 4 mm	16	
85	94111-05000	WASHER, spring, 5 mm	10	
86	94111-06000	WASHER, spring, 6 mm	2	
87	95001-35006-40	TUBE, fuel, 3.5 x 76	2	
88	95001-35240-40	TUBE, fuel, 3.5 x 240	2	
89	95002-05020	TUBE, clip, Ø7	2	
90	95211-05000	BALL, steel, # 5 (5/16")	1	

F-1 R/H Handle Switch · Cable



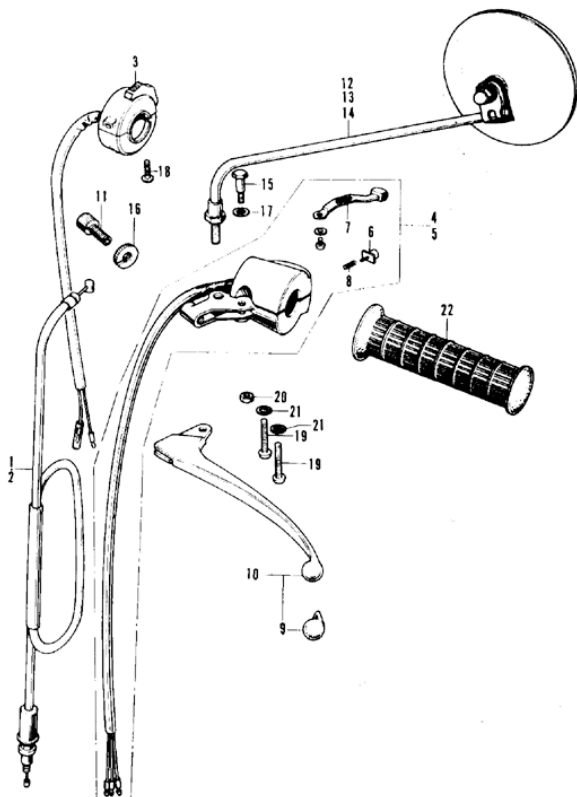
F-1 R/H Handle Switch - Cable

Ref. No.	Part No.	Description	Reqd. No. CR500	Remarks
1	17910-300-040	CABLE COMP. A, throttle (Used in U.S.A., Australia & General)	1	
2	17910-323-620	CABLE COMP. A, throttle (Used in France, England, Germany & Netherlands)	1	
3	17920-323-000	CABLE COMP. B, throttle (Used in U.S.A., Australia & General)	1	
4	17920-323-620	CABLE COMP. B, throttle (Used in France, England, Germany, Netherlands & E.D.)	1	
5	35300-300-674	SWITCH ASSY., starter lighting dimmer kill (Used in U.S.A.)	1	
6	35300-300-621	SWITCH ASSY., starter lighting dimmer kill (Used in France, England, Germany, Australia & General)	1	
7	35300-300-730	SWITCH ASSY., lighting (Used in Netherlands & E.D.)	1	
8	35315-235-000	KNOB, lighting switch	1	
9	35317-001-310	BUTTON, horn push	1	
10	35318-259-000	SPRING, horn button	1	
11	53141-300-010	PIPE, throttle grip	1	
12	53163-300-020	ADJUSTER, throttle grip	1	
13	53190-300-000	BOLT, throttle grip adjust	1	
14	93191-300-000	SPRING, throttle adjust	1	
15	88110-323-004	MIRROR, right back (Used in U.S.A.)	1	
16	88110-323-610	MIRROR, right back (Used in England, Germany, Netherlands & E.D.)	1	
17	88110-304-620	MIRROR, right back (Used in France) (Optional Part)	(1)	
18	93500-06025-0A	SCREW, pan, 5x25	1	
19	93500-06032-0A	SCREW, pan, 5x32	1	
20	94111-05000	WASHER, spring, 5 mm	2	
21	95011-14100	GRIP, right handle	1	

TEAM GROUP



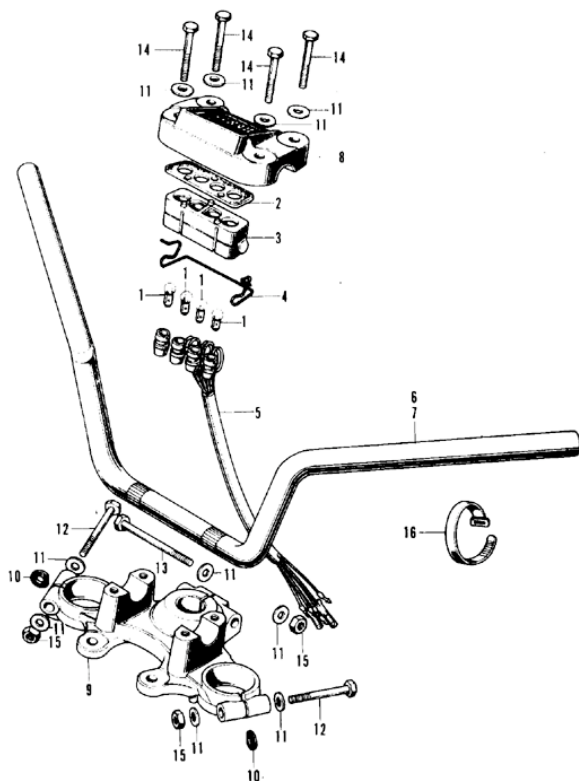
F-2 L/H Handle Switch - Cable



F-2 L/H Handle Switch - Cable

Ref. No.	Part No.	Description	Repl. No. CB500	Remarks
1	22870-323-010	CABLE COMP., clutch (Used in U.S.A. & General)	1	
2	22870-323-020	CABLE COMP., clutch (Used in France, England, Germany, Netherlands & E.D.)	1	
3	35150-300-730	SWITCH ASSY., lighting (Used in Netherlands & E.D.)	1	
4	35250-300-003	SWITCH ASSY., winker horn (Used in U.S.A.)...	1	
5	35250-323-013	SWITCH ASSY., winker horn passing (Used in France, England, Germany, General, Australia, Netherlands & E.D.)	1	
6	35317-001-330	BUTTON, horn push	1	
7	35317-235-000	KNOB, horn switch	1	
8	35318-259-000	SPRING, horn push	1	
9	53180-286-000	CAP, control lever	1	
10	53190-286-070	LAVER COMP., left steering handle	1	
11	53192-342-000	BOLT, clutch cable adjust	1	
12	88120-323-671	MIRROR, left back (Used in U.S.A.)	1	
13	88120-323-610	MIRROR, left back (Used in England, Germany, Netherlands & E.D.)	1	
14	88120-301-620	MIRROR, left back (Used in France)	1	
15	90114-268-020	BOLT, handle lever pivot	1	
16	90321-292-000	NUT, 5x12	1	
17	90501-310-000	WASHER, 7x12	1	
18	93500-04016-0A	SCREW, pan 4x16 (Used in Netherlands & E.D.)	1	
19	93500-05025-0A	SCREW, pan, 5x25	2	
20	94001-06000	NUT, hex., 6 mm	1	
21	94111-05000	WASHER, spring, 5 mm	2	
22	95011-14200	GRIP, left handle	1	

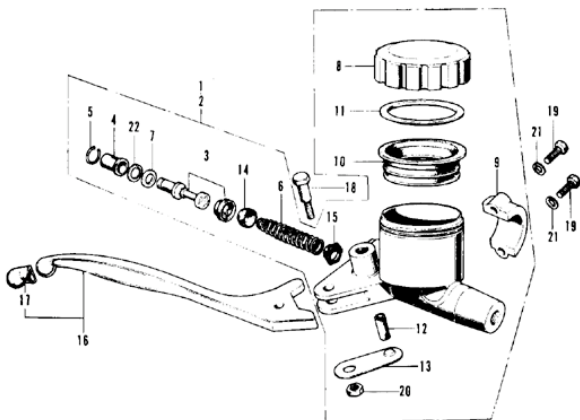
F-3 Handle · Top Bridge



F-3 Handle - Top Bridge

Ref. No.	Part No.	Description	Regd. No. CR500	Remarks
1	34902-259-000	BULB, dash	4	
2	37576-323-000	BASE, lamp socket	1	
3	37577-323-000	SOCKET, pilot lamp	1	
4	37579-323-000	SPRING, lamp socket set	1	
5	37581-323-000	CORD COMP, pilot lamp	1	
6	53100-323-000	PIPE, steering handle	1	
		(Used in U.S.A., Australia & General)		
7	53100-323-620	PIPE, steering handle	1	
		(Used in France, England, Germany, Netherlands & E.D.)		
8	53133-323-000	HOLDER, upper	1	
9	53230-323-010	BRIDGE, fork top	1	
10	53235-300-000	WASPER, spacer	2	
11	90555-283-000	WASHER, special, 8 mm	10	
12	93000-08056-0B	BOLT, hex, 8x56	2	
13	93000-08074-0B	BOLT, hex, 8x74	1	
14	93100-08040-0B	BOLT, hex, 8x40	4	
15	94001-08020-0S	NUT, hex, 8 mm	3	
16	95014-61100	BAND, Al, wire (Used in Netherlands & E.D.) ...	1	

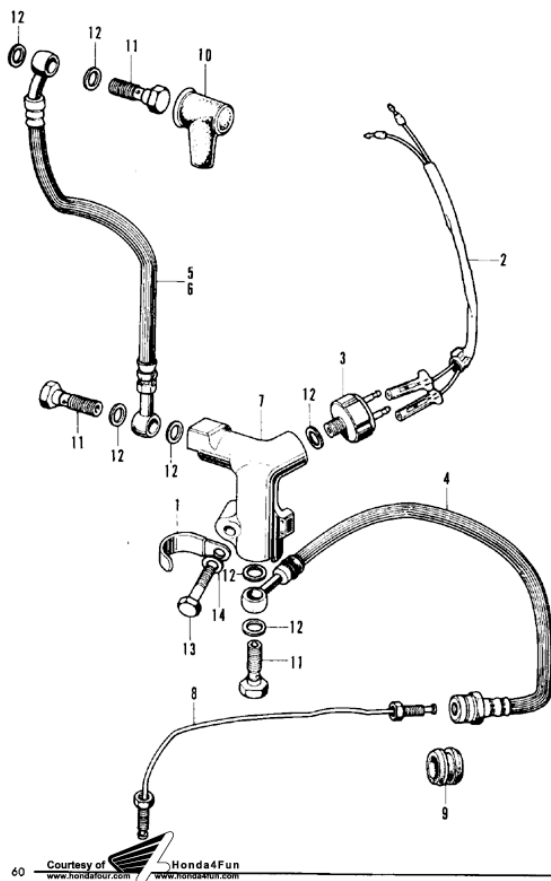
F-4 Brake Master Cylinder



F-4 Brake Master Cylinder

Ref. No.	Part No.	Description	Regd. No. CB500	Remarks
1	45500-300-050	CYLINDER ASSY., master (Not used in France),...	1	
2	45500-300-023	CYLINDER ASSY., master (Used in France)	1	
3	45502-300-305	PISTON SET	1	
4	45504-300-003	BOOTS	1	
5	45505-300-003	WASHER, stopper	1	
6	45506-300-003	SPRING COMP.	1	
7	45512-300-003	WASHER, 10.5 φ	1	
8	45513-300-020	CAP, oil cup	1	
9	45517-300-003	HOLDER, master cylinder	1	
10	45520-300-000	DIAPHRAGM	1	
11	45521-300-010	PLATE, diaphragm	1	
12	45526-300-000	BUSH, right handle lever	1	
13	45527-300-000	PLATE, lever bush setting	1	
14	46125-533-003	CUP, primary	1	
15	46140-533-003	VALVE COMP., check	1	
16	53170-300-000	LEVER ASSY., handle	1	
17	53180-286-000	CAP, control lever	1	
18	90114-300-000	BOLT, handle lever pilot	1	
19	90000-00025-02	BOLT, hex., 6×25	2	
20	94002-06000	NUT, hex., 6 mm	1	
21	94111-06000	WASHER, spring, 6 mm	2	
22	94520-18000	CIR-CLIP, internal, 18 mm	1	

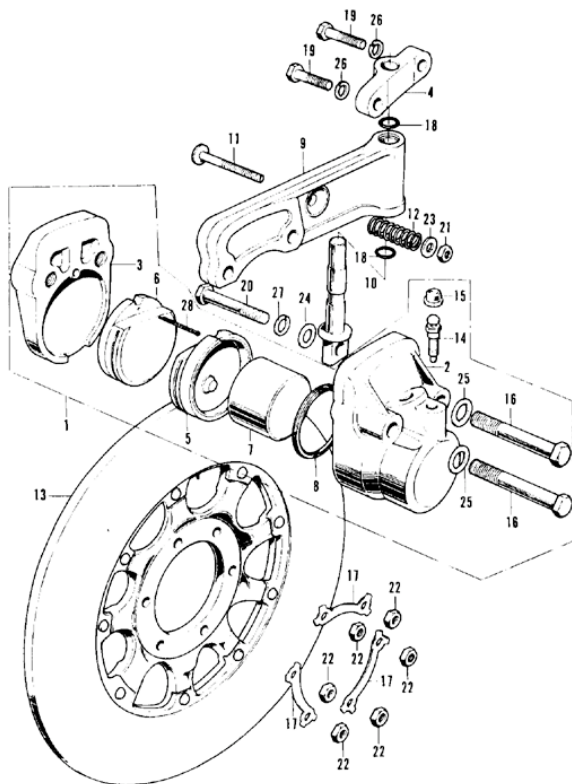
F-5 Front Brake - Hose



F-5 Front Brake · Hose

Ref. No.	Part No.	Description	Reqd. No. CB500	Remarks
1	32111-323-000	CLAMPER, cord.....	1	
2	35345-319-000	CORD, front stop switch sub.....	1	
3	35350-300-006	SWITCH ASSY., stop	1	
4	45125-300-020	HOSE A, front brake	1	
5	45126-300-030	HOSE B, front brake (Used in U.S.A., General & Australia)	1	
6	45126-323-620	HOSE B, front brake (Used in France, England, Germany, Netherlands & E.D.)	1	
7	45127-323-000	JOINT, three way	1	
8	45128-323-020	PIPE, front brake	1	
9	45146-300-000	GROMMET, brake hose	1	
10	45622-300-010	BOOT, master cylinder	1	
11	90145-300-000	BOLT, oil	3	
12	90545-300-000	WASHER, oil bolt	7	
13	92000-06028	BOLT, hex., 6×28	1	
14	94101-06000	WASHER, plain, 6 mm.....	1	

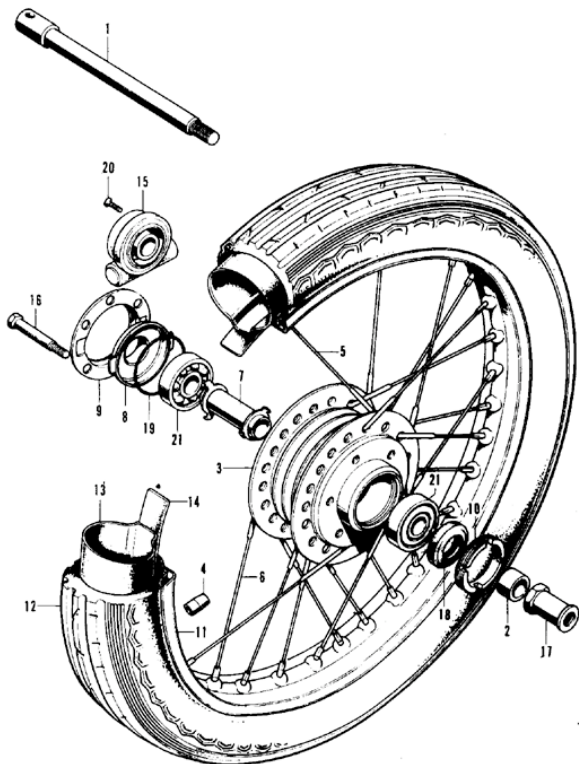
F-6 Front Brake Caliper - Disk



F-6 Front Brake Caliper - Disk

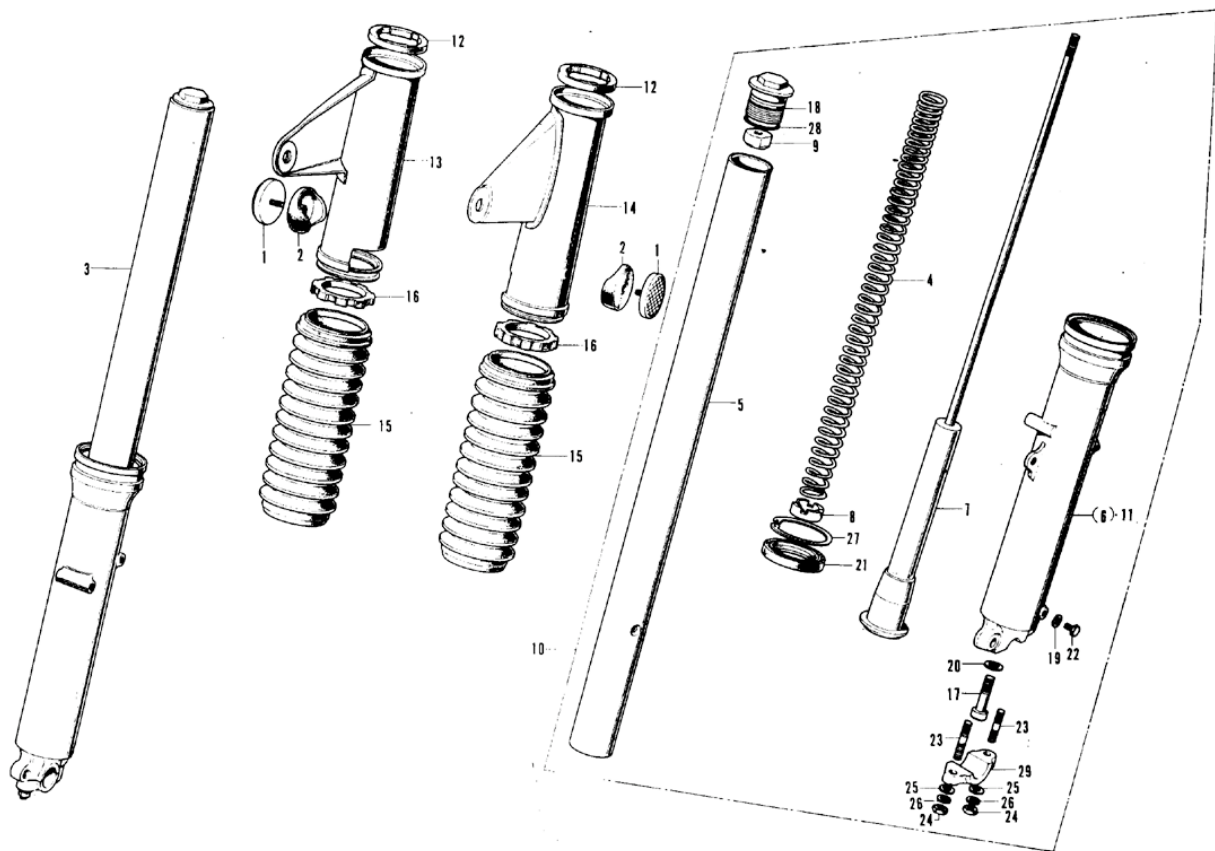
Ref. No.	Part No.	Description	Reqd. No. CB900	Remarks
1	45100-323-023	CALIPER ASSY. (TOKIKO)	1	
2	45101-323-013	CALIPER A (TOKIKO)	1	
3	45102-323-003	CALIPER B (TOKIKO)	1	
4	45104-323-010	JOINT, caliper holder	1	
5	45106-323-023	PAD COMP. A (TOKIKO)	1	
	45106-323-016	PAD COMP. A (ASAHI)	1	
6	45106-323-013	PAD COMP. B (TOKIKO)	1	
	45106-323-006	PAD COMP. B (ASAHI)	1	
7	45107-323-000	PISTON COMP.	1	
8	45108-300-003	SEAL, piston (TOKIKO)	1	
9	45115-323-010	HOLDER, caliper	1	
10	45116-323-010	PIN, caliper holder	1	
11	45117-300-020	BOLT, caliper adjust	1	
12	45119-300-020	SPRING, caliper adjust	1	
13	45120-323-030	DISK COMP., front brake	1	
14	45224-579-013	VALVE, breather (TOKIKO)	1	
15	45225-579-013	CAP, breather valve (TOKIKO)	1	
16	90165-323-000	BOLT, caliper setting	2	
17	90522-300-010	WASHER, tongued, 8 mm	3	
18	91259-300-000	O-RING, 10x1.7	2	
19	92200-06025	BOLT, hex., 6x25	2	
20	92200-08035-0A	BOLT, hex., 8x35	1	
21	94001-06000	NUT, hex., 6 mm	1	
22	94001-08000-0S	NUT, hex., 8 mm	6	
23	94101-06000	WASHER, plain, 6 mm	1	
24	94101-08000	WASHER, plain, 8 mm	1	
25	94102-10000	WASHER, plain, 10 mm	2	
26	94111-06000	WASHER, spring, 6 mm	2	
27	94111-08000	WASHER, spring, 8 mm	1	
28	94301-10220	PIN, split, 1.6x22	1	

F-7 Front Wheel



F-7 Front Wheel

Ref. No.	Part No.	Description	Regd. No. CB500	F.R.T.	Remarks
1	44301-300-000	AXLE, front wheel.....	1	0.4	
2	44311-300-000	COLLAR, front wheel	1	0.4	
3	44601-300-040	HUB, front wheel	1	2.7	
4	44606-283-000	BALANCER, wheel (30 g)	(0~2)	0.1	
	44607-283-000	BALANCER, wheel (15 g)	(0~2)		
	44608-283-000	BALANCER, wheel (10 g)	(0~2)		
	44609-283-000	BALANCER, wheel (5 g).....	(0~2)		
5	44606-300-003	SPOKE A, front (DAIDO)	20	2.5	
6	44607-300-003	SPOKE B, front (DAIDO)	20	2.5	
7	44620-300-020	COLLAR, front axle distance	1	0.6	
8	44641-300-020	RETAINER, gear box	1	0.5	
9	44642-300-020	COVER, gear box retainer	1	0.5	
10	44643-300-000	RETAINER, front wheel bearing	1	0.6	
11	44701-300-013	RIM, front wheel (DAIDO).....	1	2.7	
12	44711-300-003	TIRE, front wheel (B.S. MC 3.25-19 4 P.R.).....	1	1.0	
13	44712-300-000	TUBE, front wheel (3.25-19)	1	1.0	
14	44713-300-000	FLAP, front tire	1	1.0	
15	44800-323-000	GEAR BOX ASSY., speedometer	1	0.5	
16	90122-300-020	BOLT, 8x102	6	0.1	
17	90306-300-000	NUT, front wheel axle	1	0.1	
18	91252-300-003	DUST-SEAL, 22368 (ARAI)	1	0.6	
19	91302-300-000	O-RING, 58x2	1	0.5	
20	93700-05015-0A	SCREW, oval, 5x15	1		
21	96140-63020	BEARING, ball, 6302R	2		



F-8 Front Cushion

Ref. No.	Part No.	Description	Reqd. No. CB500	Remarks
1	33741-286-670	REFLECTER, front reflex	2	
2	33743-286-670	BASE, reflex reflector	2	
3	51400-323-020	FORK ASSY., right front	1	
4	51401-323-010	SPRING, front cushion	2	
5	51410-323-010	PIPE, front fork	2	
6	51421-323-010	CASE, right front fork bottom	1	
7	51430-323-010	DAMPER COMP.	2	
8	51461-323-010	SEAT, cushion spring	2	
9	51462-323-000	NUT, lock, 8 mm	2	
10	51500-323-020	FORK ASSY., left fork	1	
11	51521-323-010	CASE, left front fork bottom	1	
12	51601-323-000	CUSHION A, fork cover	2	
13	51602-323-010XW	COVER, right front fork (Chrome)	1	
14	51606-323-010XW	COVER, left front fork (Chrome)	1	
15	51611-300-000	BOOT, front fork	2	
16	51622-323-000	CUSHION 'B, front cover	2	
17	90116-283-010	BOLT, hollow set, 8 mm	2	
18	90123-323-010	BOLT, front fork	2	
19	90543-273-000	PACKING, drain cock	2	
20	90544-283-000	WASHER, special, 8 mm	2	
21	91255-323-013	OIL-SEAL, 354811	2	
22	92000-06010	BOLT, hex., 6x10	2	
23	92700-08050-30	BOLT, stud, 8x50	4	
24	94030-08000	NUT, hex., 8 mm	4	
25	94101-08000	WASHER, plain, 8 mm	4	
26	94111-08000	WASHER, spring, 8 mm	4	
27	94521-48000	CIR-CLIP, internal, 48 mm	2	
28	94608-50000	O-RING, 23x2.8	2	
29	95014-41000	HOLDER, axle	2	